



**MONITORING AUSTRALIAN
BASS IN THE BRISBANE
RIVER 1990-2013**



MONITORING AUSTRALIAN BASS IN BRISBANE RIVER 1990-2013

Report

This report has been prepared by Infofish Australia for Brisbane Valley Anglers.
November 2013

Scope

The report provides:

- ✦ A summary of tagging of Australian Bass in the Brisbane River by members of Brisbane Valley Anglers and others from 1990-2013.
- ✦ A summary of recaptures of Australian Bass tagged in Lake Somerset from 2008-2013.

Data source

Tagging and recapture records contained in the Suntag database at <http://qld.infofish/Infofish> , from 1999-2013. Access to database is limited to authorised users.

Area being monitored

The area being monitored is the Brisbane River downstream from the Wivenhoe Dam to below Mt Crosby Weir as shown in *figure 1*. Locations where fish were tagging and recaptured are shown using grids on Suntag grid map MB05.

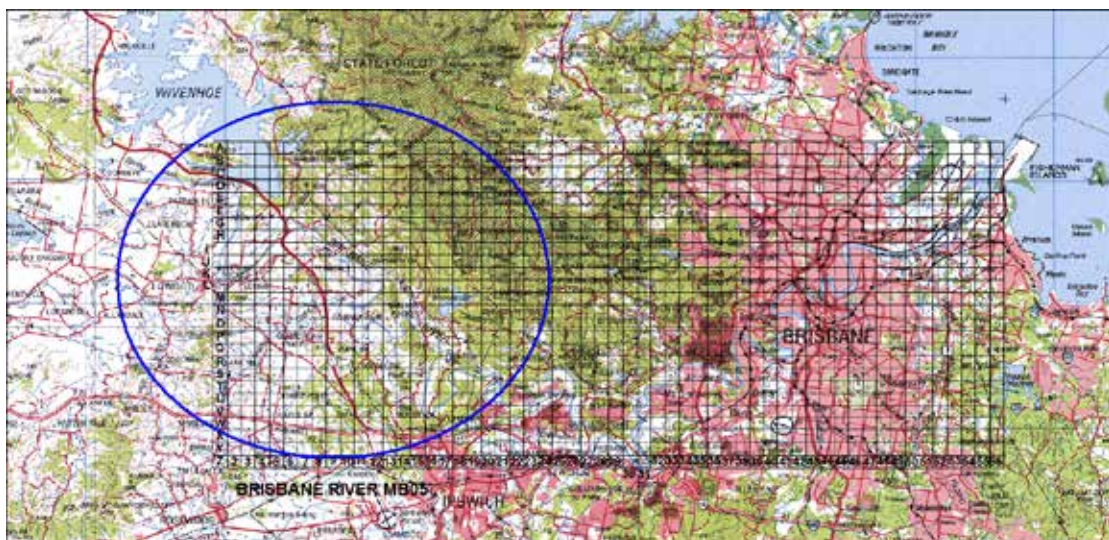


Figure 1: Area of Brisbane River being monitored

Australian Bass in Brisbane River

From 1990-2013 there have been 4,145 Bass tagged in the Brisbane River downstream from Wivenhoe dam. *Figure 2* shows the number of fish tagged each year and *figure 3* shows the locations where fish have been tagged.

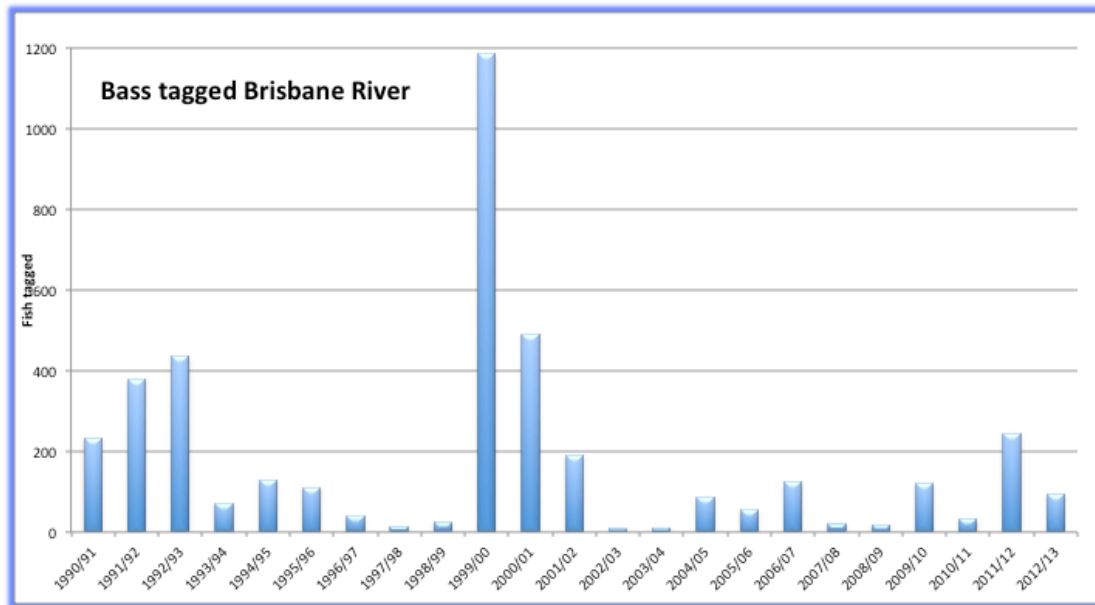


Figure 2: Number of Australian Bass tagged in the Brisbane River from 1990-2013

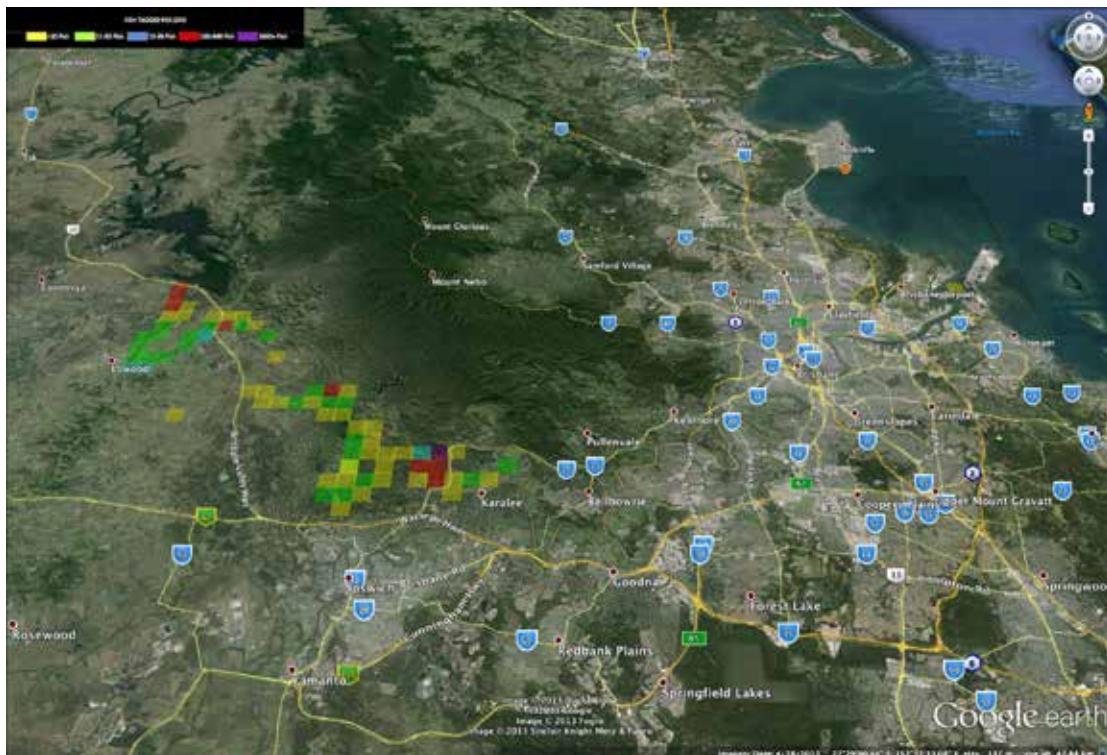


Figure 3: Locations where Australian Bass were tagged in Brisbane River

Of the Bass tagged 4,133 were measured. The number of Bass tagged in each size range in show in *figure 4*. Of the fish tagged most (23.3%) have been in the size range 350:399mm while 0.8% of fish tagged have been over 500mm.

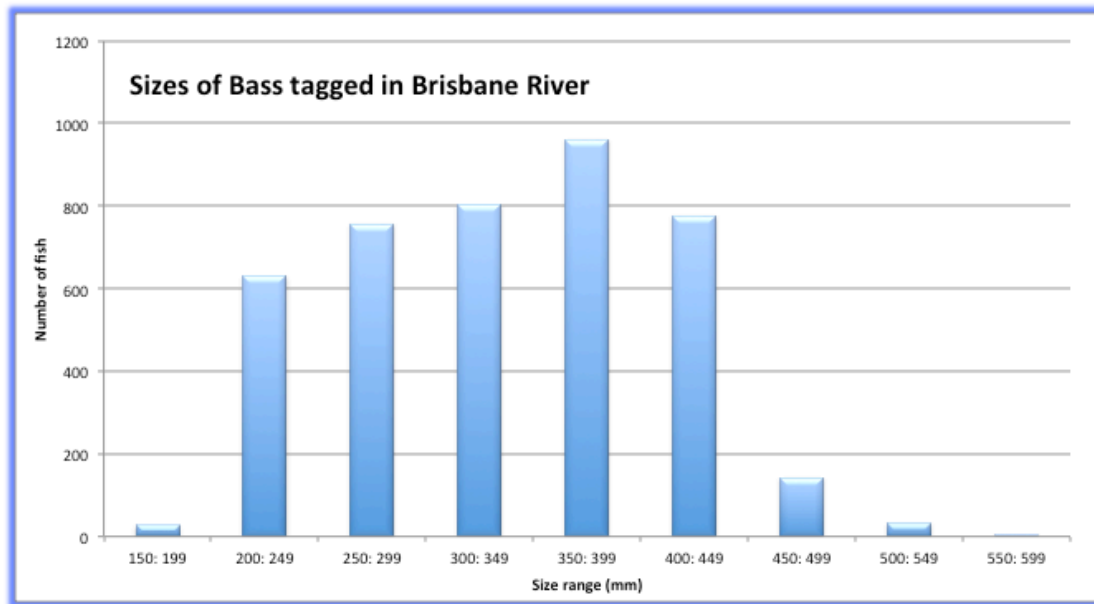


Figure 4: Number of Australian Bass tagged in each size range from 1990-2013

Australian Bass movement

Of the 4,145 Bass tagged in the Brisbane River there have been 438 (10.6%) recaptured with 51 (1.2%) recaptured more than once. *Figure 5* shows the distance fish were recaptured from where tagged compared with the number of days between tagging and recapture.

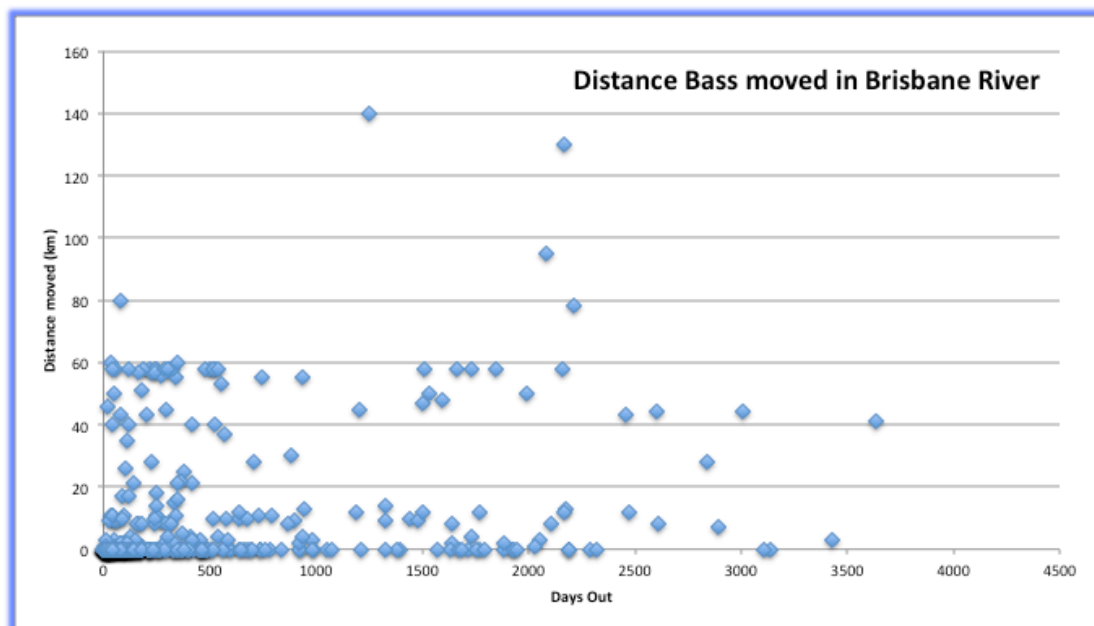


Figure 5: Distance Bass moved in Brisbane River compared with days out

Of 447 recaptures there were 245 (54.8%) that were recaptured in the same area while *figure 6* shows the numbers of fish that moved upstream compared with those that moved downstream. *Figure 7* shows where Bass tagged in the Brisbane River have been recaptured.

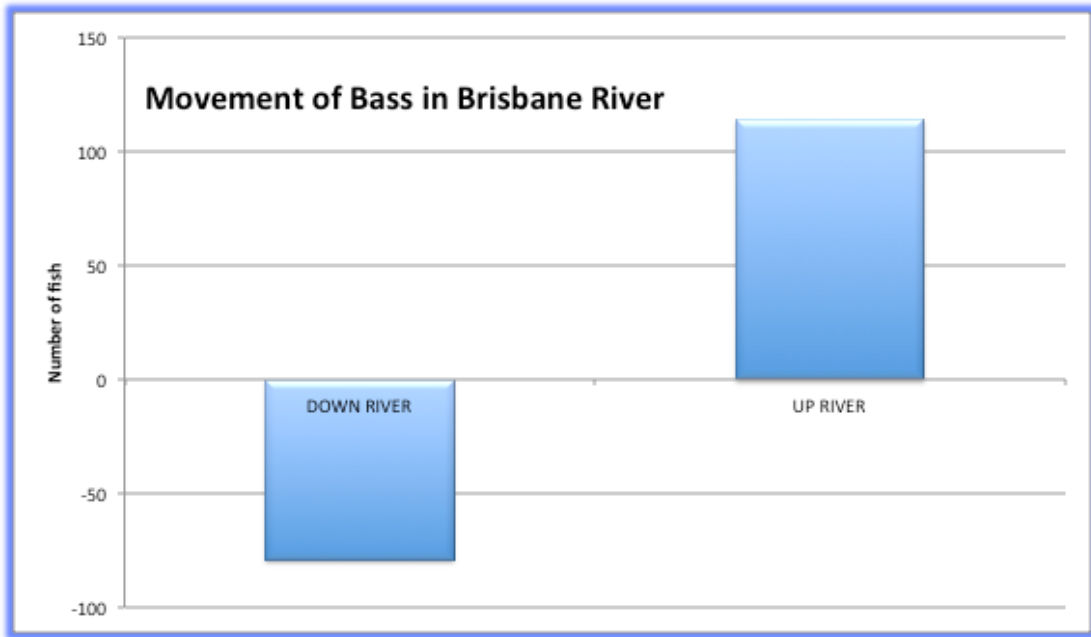


Figure 6: Movement of Bass upstream and downstream in the Brisbane River

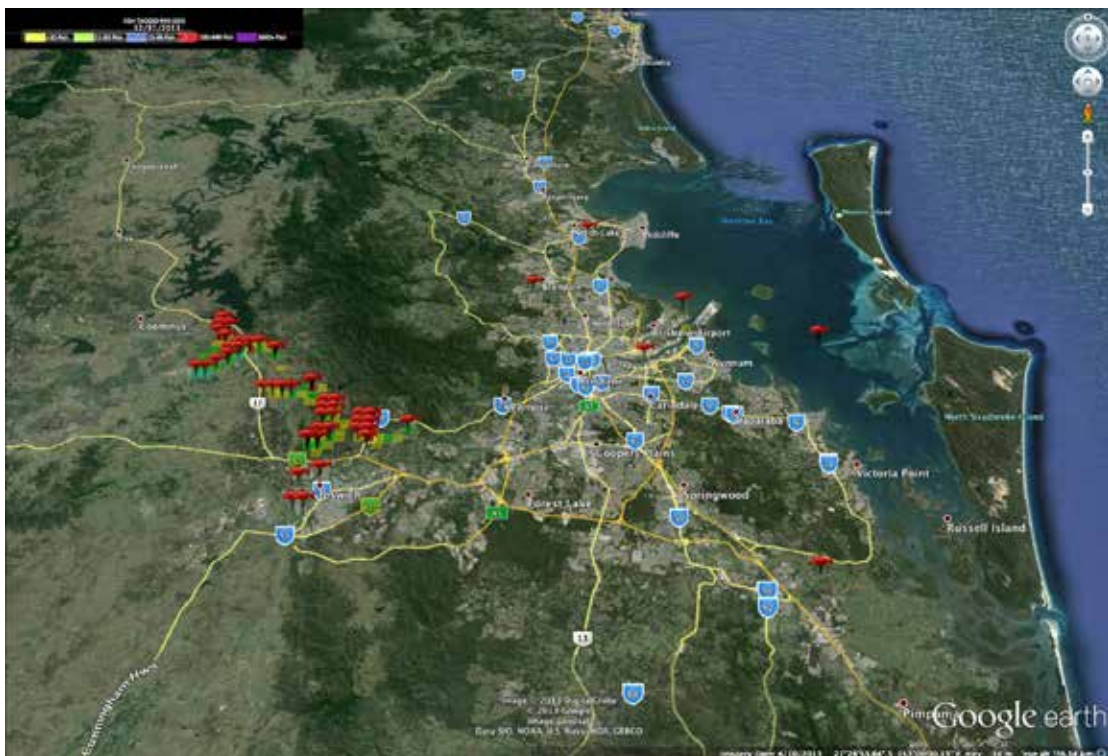


Figure 7: Locations of recaptures of Bass tagged in the Brisbane River

Of the recapture there were 275 fish that were at liberty for over 90 days and showed positive growth. *Figure 7* shows the growth of Bass in the river.

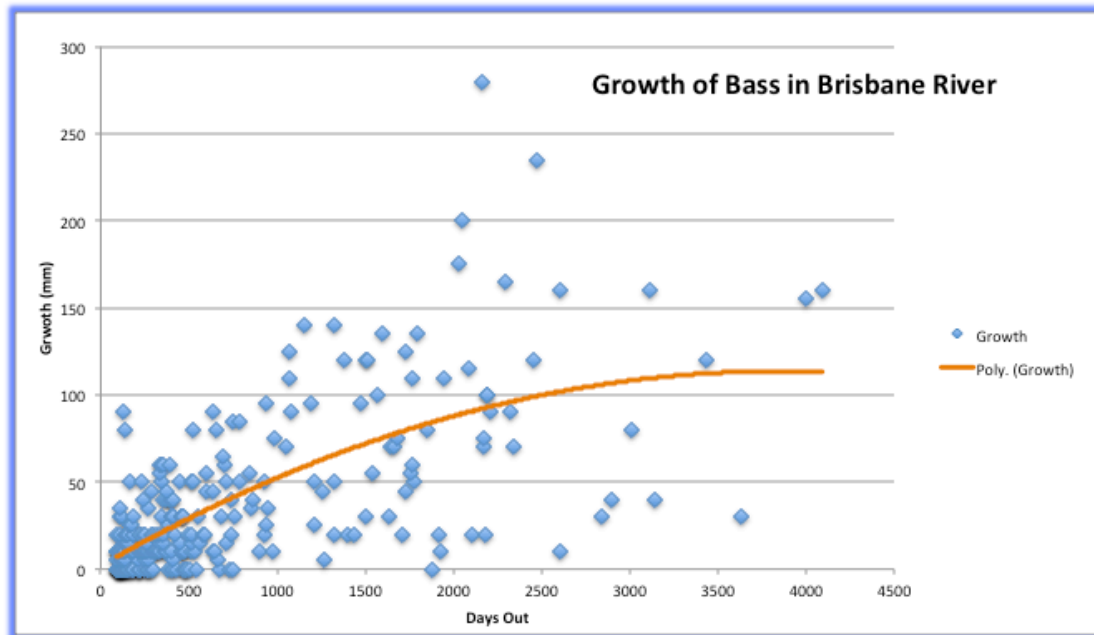


Figure 8: Growth of Bass in the Brisbane River

Australian Bass tagged in Lake Somerset

Bass have been tagged in Lake Somerset since the 1990s. From the early 2000s there was a prolonged drought with dam levels falling to critical levels. This meant that there were very few opportunities for fish to leave the lake. Since 2008 the dam has spilled a number of times causing flooding downstream in Ipswich and Brisbane. This also provided the opportunity for fish to leave the lake.

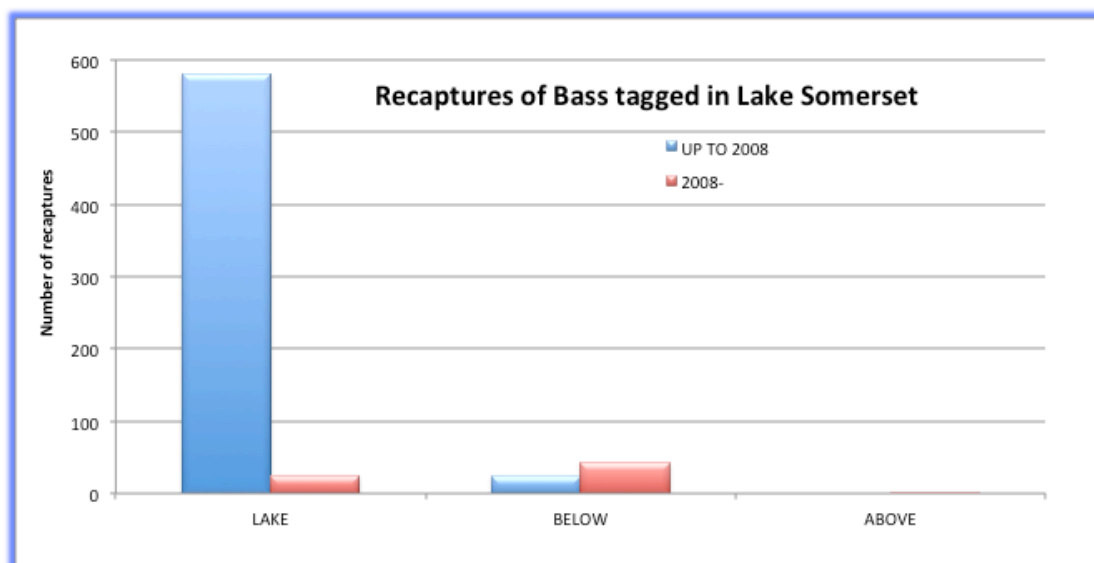


Figure 9: Recaptures of Bass tagged in Lake Somerset

Up to 2008 for fish tagged in the lake 96.0% were recaptured in the lake. Since 2008 there have been 69 recaptures of fish tagged prior to 2008 and 60.9% of recaptures have been made outside the lake. *Figure 9* shows the numbers of fish recapture within and outside the lake.

Most of the fish have gone over the dam wall into Lake Wivenhoe (7 fish), over the Wivenhoe spillway as well into the Brisbane River (31 fish). Some fish have then gone over Mt Crosby Weir and into the Bremer River (3 fish). One fish made it all the way down the river and ended up in the Pine River. Two fish were recaptured above the lake in the Stanley River and in Kilcoy Creek below the weir. *Figure 10* shows where fish tagged in Lake Somerset have been recaptured since 2008.

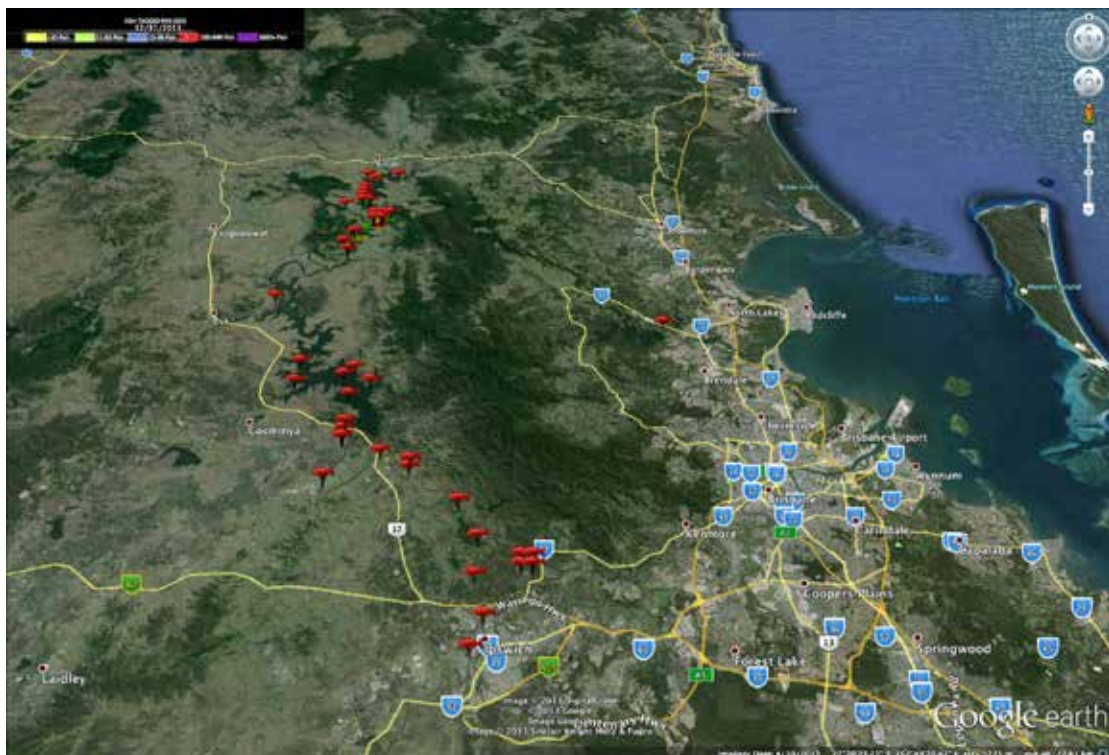


Figure 10: Locations of recaptures of Bass since 2008 that were tagged in Lake Somerset