

## BRISBANE RIVER BASS REVIEW JUNE 2024

### INFORMATION RATING



Stocking group: Brisbane Valley Anglers Fish Stocking Association

Species stocked: Australian Bass

Stocking timeframe: 2014-2024

Fish timeframe: 2015-2024

Fisher timeframe: 2020-2024

The river is stocked by the Brisbane Valley Anglers Fish Stocking Association and from 2013-2024 there were 45,169 Bass fingerlings released with the latest release of 3,334 in 2024. Bass stocks in the river are also topped up when fish spill from Wivenhoe and Somerset.

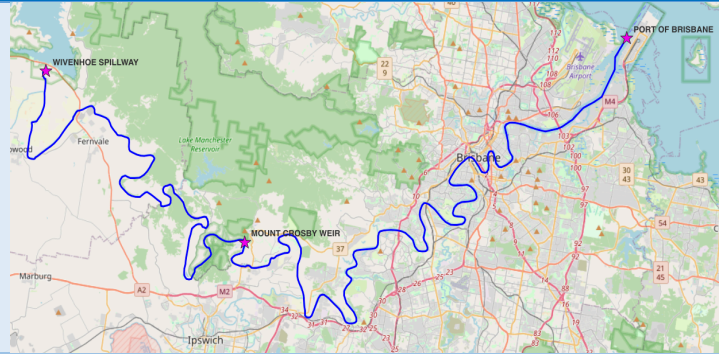
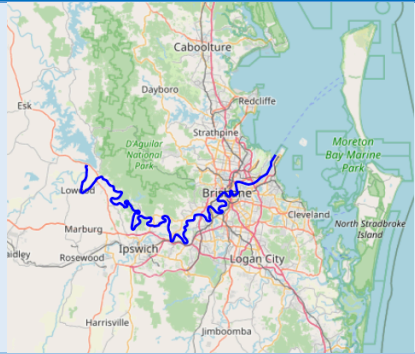
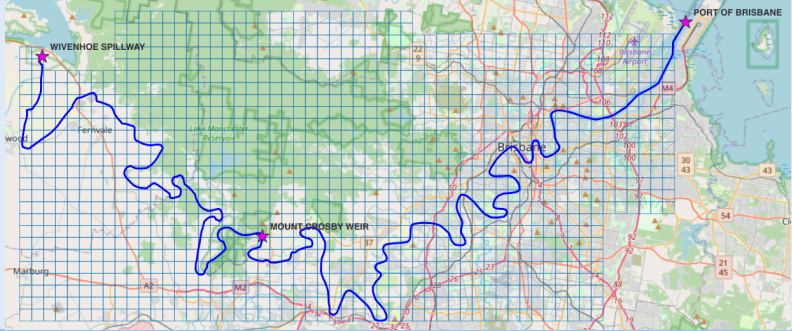
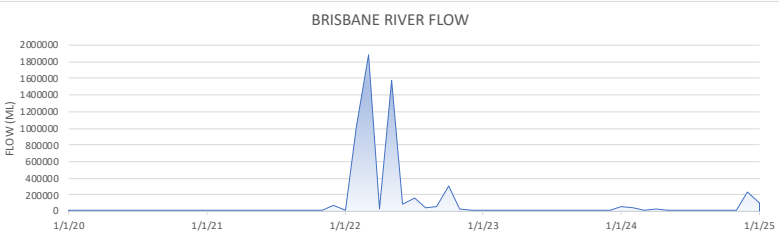
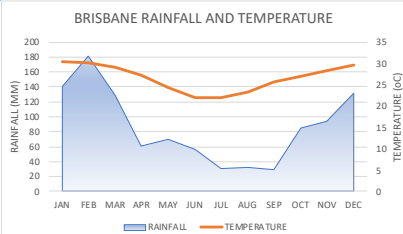
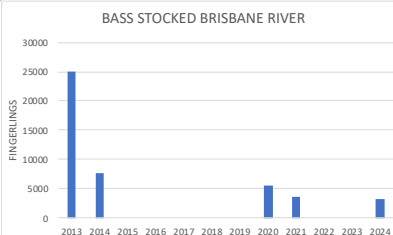
Fishing for Bass and tagging in the river are closely related to the spilling of Lake Wivenhoe. There were major spills in 2011 and 2022 with major flooding in the river. Fishing effort for Bass in the river is concentrated below Wivenhoe spillway to Lockyer Creek and in the area from Mount Crosby Weir to Colleges Crossing. There is also some effort at other access points along the river.

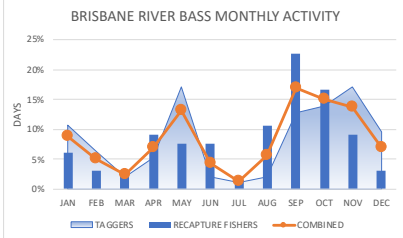
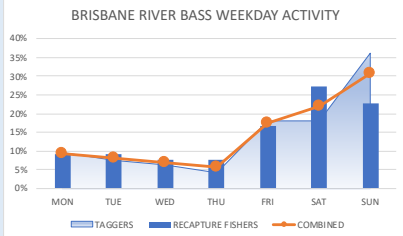
Following the 2011 spill tagging occurred in the river from 2011-2016 with recaptures of fish tagged in the river and those that spilled from both Wivenhoe and Somerset. As the catch rate reduced over those years effort fell away with little tagging and no recaptures from 2017-2020.

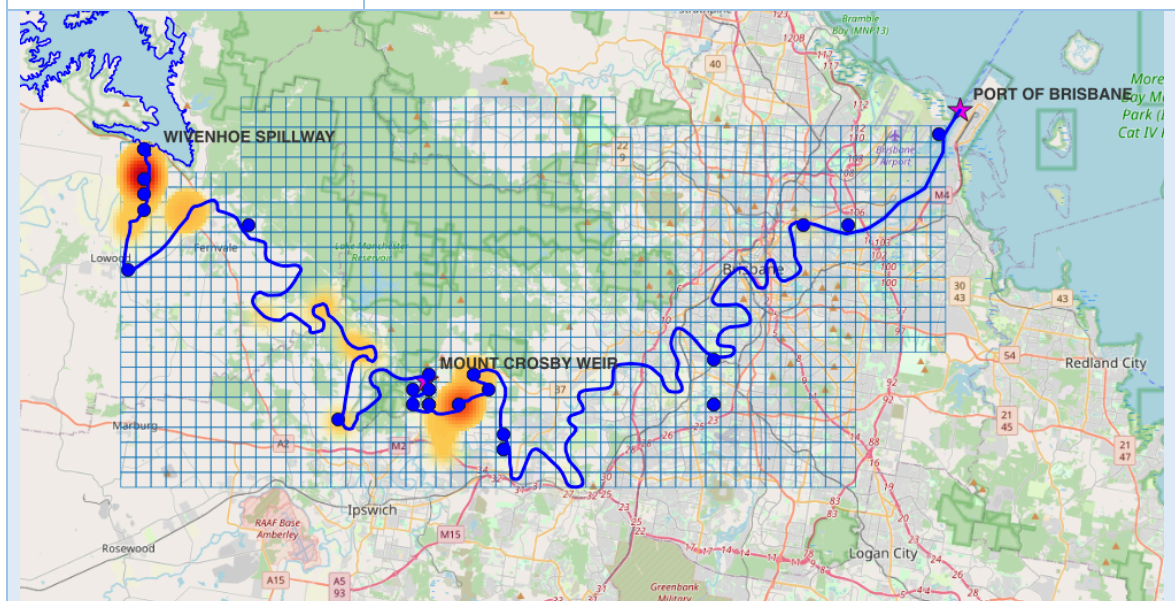
Fishing and tagging effort rose again after the 2022 spill with recaptures of fish tagged in the river and those that spilled from both Wivenhoe and Somerset. Effort is expected to continue over the next few years until the catch rate falls to a level making it less attractive. The Bass fishing in the river is a good example of effort being driven by catch rates.

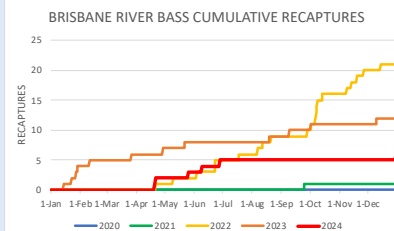
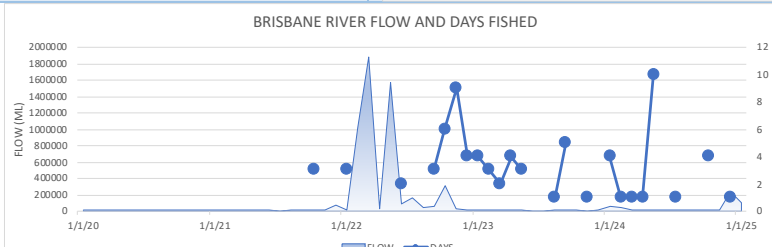
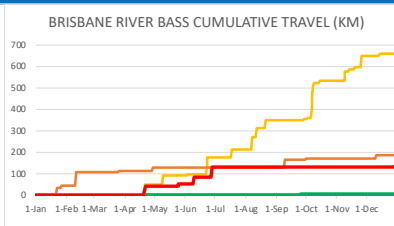
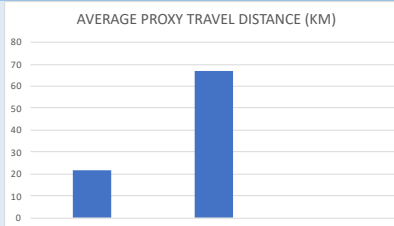
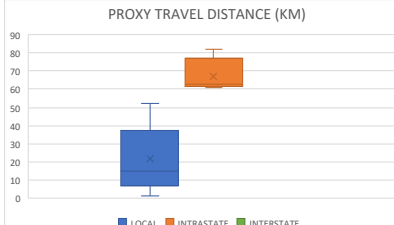
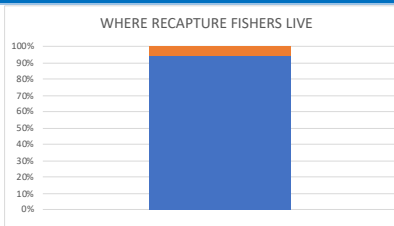
Fish recaptured after the 2011 spill were mostly tagged in Somerset as the number of fish tagged in Wivenhoe was low. Fish recaptured after the 2022 spill were mostly from Wivenhoe. The lake spilled again in Dec 2024 so it is likely there will be further recaptures in the river of lake fish.

Bass fishing in the river is mostly undertaken by locals from Ipswich, Brisbane and nearby areas.

BRISBANE RIVER		LOCATION
		
WATERWAYS	ACTUAL	GRAPH or MAP
<p>Tag grid map</p> <p>Brisbane River MB05</p> <p>Lake Wivenhoe – Mount Crosby Weir (fresh)</p> <p>Mount Crosby Weir – Port of Brisbane (fresh-brackish-tidal)</p>		
ENVIRONMENTAL	ACTUAL	GRAPH or MAP
<p>Brisbane River flow (ML)</p> <p>2020-2024</p> <p>Flooding 2022</p> <p>Lakes Somerset and Wivenhoe spilling</p>	<p>BRISBANE RIVER FLOW</p> 	
<p>Mean monthly rainfall (mm)</p> <p>Mean monthly air temperature (oC)</p>		<p>BRISBANE RAINFALL AND TEMPERATURE</p> 
STOCKING		
<p>Fingerlings stocked</p> <p>2013-2024</p>	<p>Totals</p> <p>Bass</p> <p>45,169</p> <p>High</p> <p>2013</p> <p>25,102</p> <p>Low</p> <p>15-19/22-23</p> <p>0</p>	<p>BASS STOCKED BRISBANE RIVER</p> 

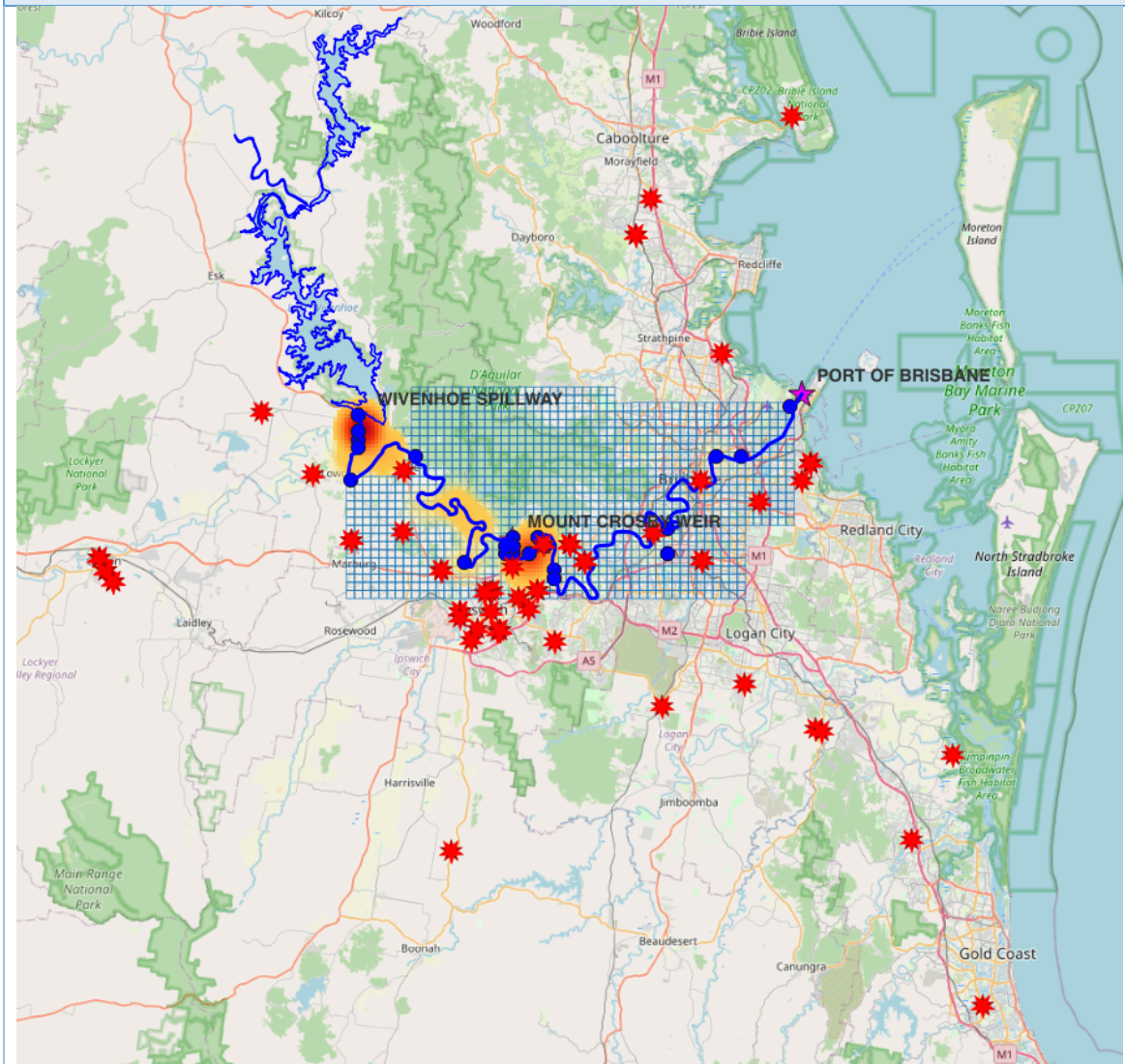
FISHERS	ACTUAL			MAP or GRAPH				
DATA RELIABILITY								
Sample size (days fished) Tag days (blue arrow) Recaptures (orange arrow) Confidence % Error % 2020-2024	Reliability level	LOW		MODERATE		MODERATE		HIGH
	Samples	10	41	68	271	384	664	
	Confidence	80%	80%	90%	90%	95%	99%	
	Error	20%	10%	10%	5%	5%	5%	
	<div><div></div><div></div></div>							
ACTIVITY								
Monthly activity Days fished Taggers (94) Recapture fishers (66) 2020-2024		Month	Days	<div><div>BRISBANE RIVER BASS MONTHLY ACTIVITY</div><div></div></div>				
	Taggers	May	17%					
		Nov	17%					
	Recaps	Oct	14%					
		Sep	23%					
Oct	17%							
Weekday activity Days fished Taggers (94) Recapture fishers (66) 2020-2024		Days	Fished	<div><div>BRISBANE RIVER BASS WEEKDAY ACTIVITY</div><div></div></div>				
	Taggers	Weekend	54%					
		Weekdays	46%					
	Recaps	Weekend	50%					
		Weekdays	50%					
Location activity Fish tagged (red-orange heat map) Recaptured (blue dots) 2020-2024	Fish tagged (392) Recaptured (66)							




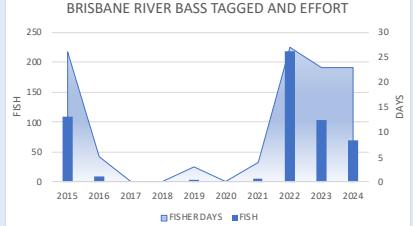
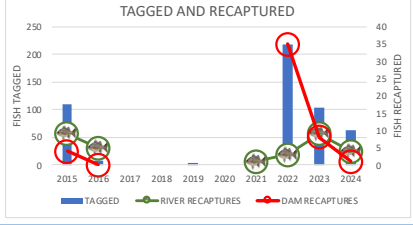
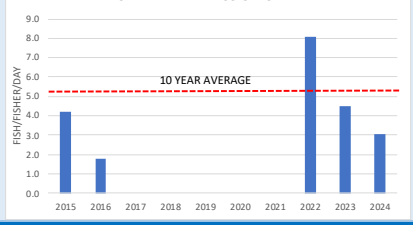
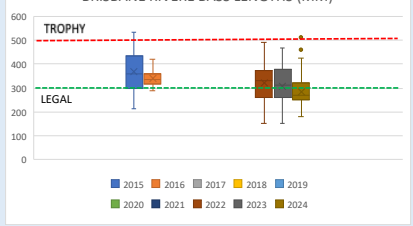


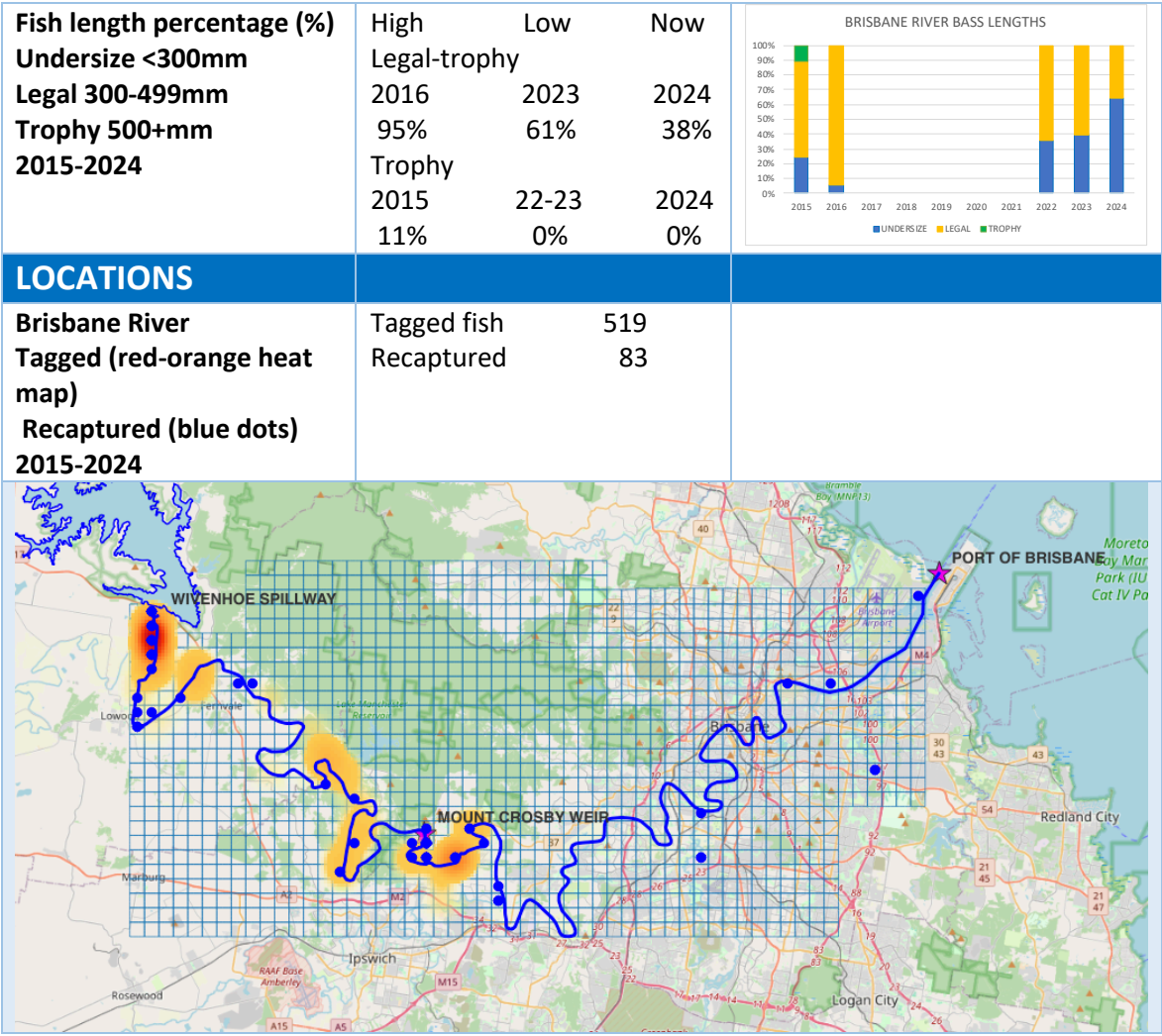
EFFORT			
Cumulative recaptures 2020-2024	Year	Recaps	
	2020	8	
	2021	15	
	2022	2	
	2023	11	
	2024	6	
River flow and tagger effort Below Wivenhoe to Colleges Crossing Days fished 2020-2024			
TRAVEL			
Cumulative travel (km) home to recapture location 2020-2024	Year	Km	
	2020	-	
	2021	6	
	2022	660	
	2023	189	
	2024 Jan-Jun	129	
Average proxy distance home to recapture location 2020-2024	Av distance (km)		
	Local	22	
	Intrastate	67	
	Interstate	-	
Travel proxy distance from where fishers live to recapture location 2020-2024	Range (km)		
	Local	1-52	
	Intrastate	61-82	
	Interstate	-	
DEMOGRAPHICS			
Where recapture fishers live Local (<60km) Intrastate (Qld postcode) Interstate 2020-2024	Recaptures	67	
	Local	63 (94%)	
	Intrastate	4 (6%)	
	Interstate	-	



Where recapture fishers  
live (red stars)  
Local  
Intrastate  
2020-2024



AUSTRALIAN BASS	ACTUAL			MAP or GRAPH																				
																								
DATA RELIABILITY																								
<b>Sample size (av fish/year)</b> <b>Tag days (blue arrow)</b> <b>Recaptures (orange arrow)</b> <b>Confidence %</b> <b>Error %</b> <b>2020-2024</b>	<table border="1"> <thead> <tr> <th>Reliability level</th><th>LOW</th><th>MODERATE</th><th>MODERATE</th><th>HIGH</th></tr> </thead> <tbody> <tr> <td>Samples</td><td>10</td><td>41</td><td>68</td><td>271</td></tr> <tr> <td>Confidence</td><td>80%</td><td>80%</td><td>90%</td><td>95%</td></tr> <tr> <td>Error</td><td>20%</td><td>10%</td><td>5%</td><td>5%</td></tr> </tbody> </table> <div>   </div>			Reliability level	LOW	MODERATE	MODERATE	HIGH	Samples	10	41	68	271	Confidence	80%	80%	90%	95%	Error	20%	10%	5%	5%	
Reliability level	LOW	MODERATE	MODERATE	HIGH																				
Samples	10	41	68	271																				
Confidence	80%	80%	90%	95%																				
Error	20%	10%	5%	5%																				
EFFORT																								
<b>Fishing effort</b> <b>Days fished (98)</b> <b>Fish tagged (513)</b> <b>2015-2024</b>	High	Low	Now																					
<b>Bass tagged and recaptured each year</b> <b>Includes recaptures of spilled fish from Wivenhoe and Somerset</b> <b>2015-2024</b>	High	Low	Now																					
<b>Tag rate</b> <b>Fish tagged/day</b> <b>2015-2024</b>	High	Low	Now																					
LENGTHS																								
<b>Average length (mm)</b> <b>Bars show length range</b> <b>Dots show outliers</b> <b>2015-2024</b>	High	Low	Now																					

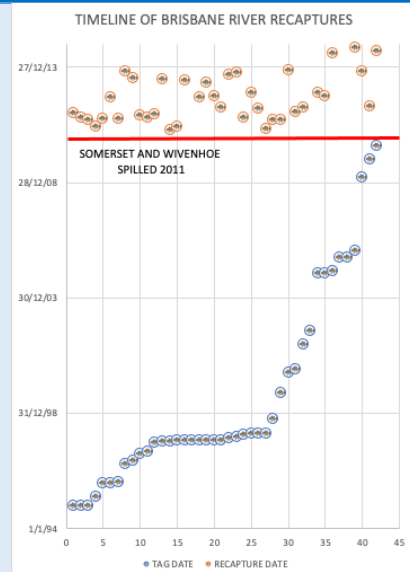


## FISH SPILLED FROM WIVENHOE AND SOMERSET

**Bass tagged Wivenhoe and Somerset recaptured after 2011 spill**

Tagged lake recaptured river  
Somerset 50  
Wivenhoe 3

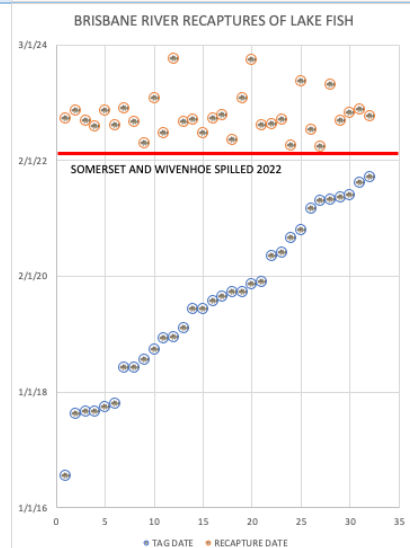
Earliest date tagged  
31/12/1994  
Latest date tagged  
31/7/2010



**Bass tagged Wivenhoe and Somerset recaptured after 2022 spill**

Tagged lake recaptured river  
Somerset 2  
Wivenhoe 34

Earliest date tagged  
19/7/2016  
Latest date tagged  
16/9/2021



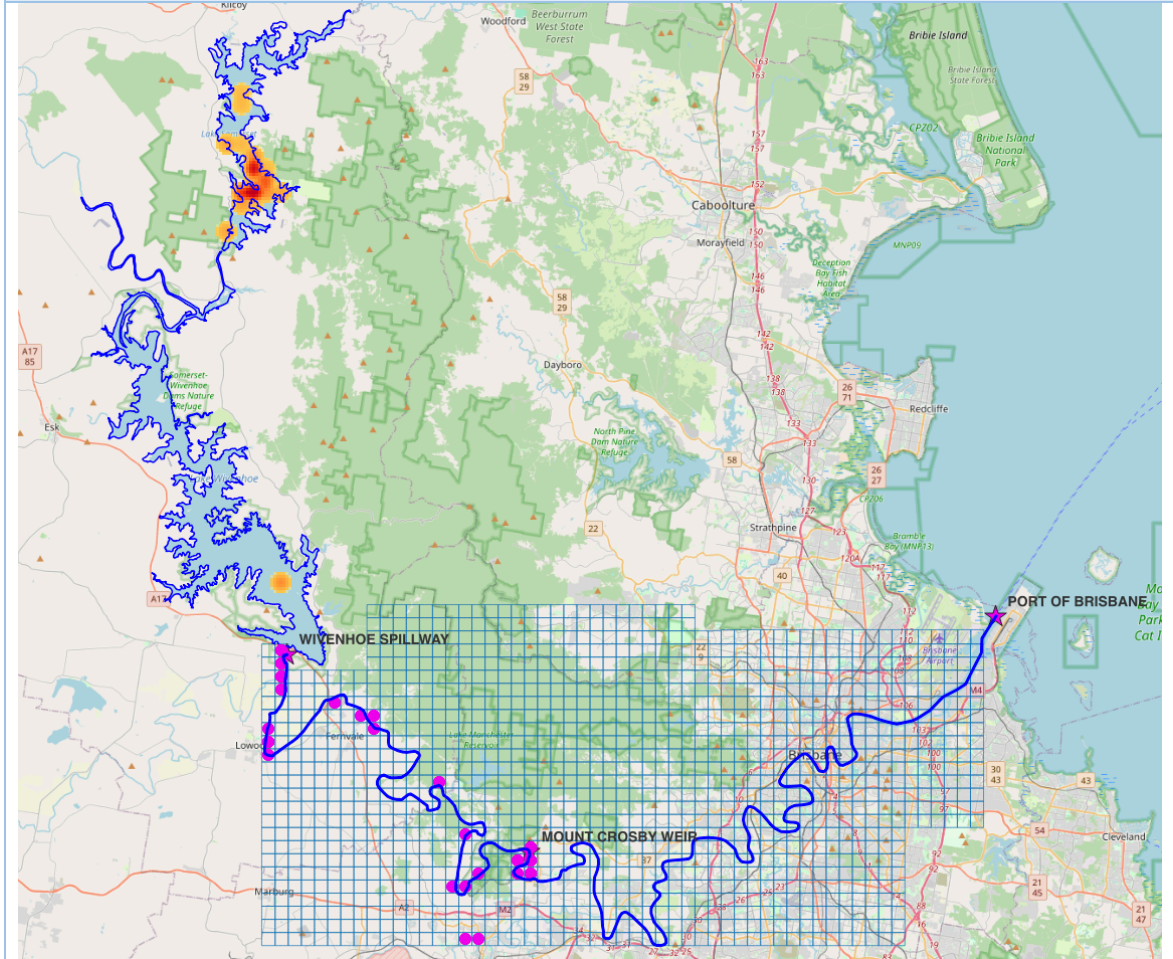


## MOVEMENT

Bass recaptures after 2011  
spill

Tagged (red-orange heat  
map)

Recaptures (purple dots)

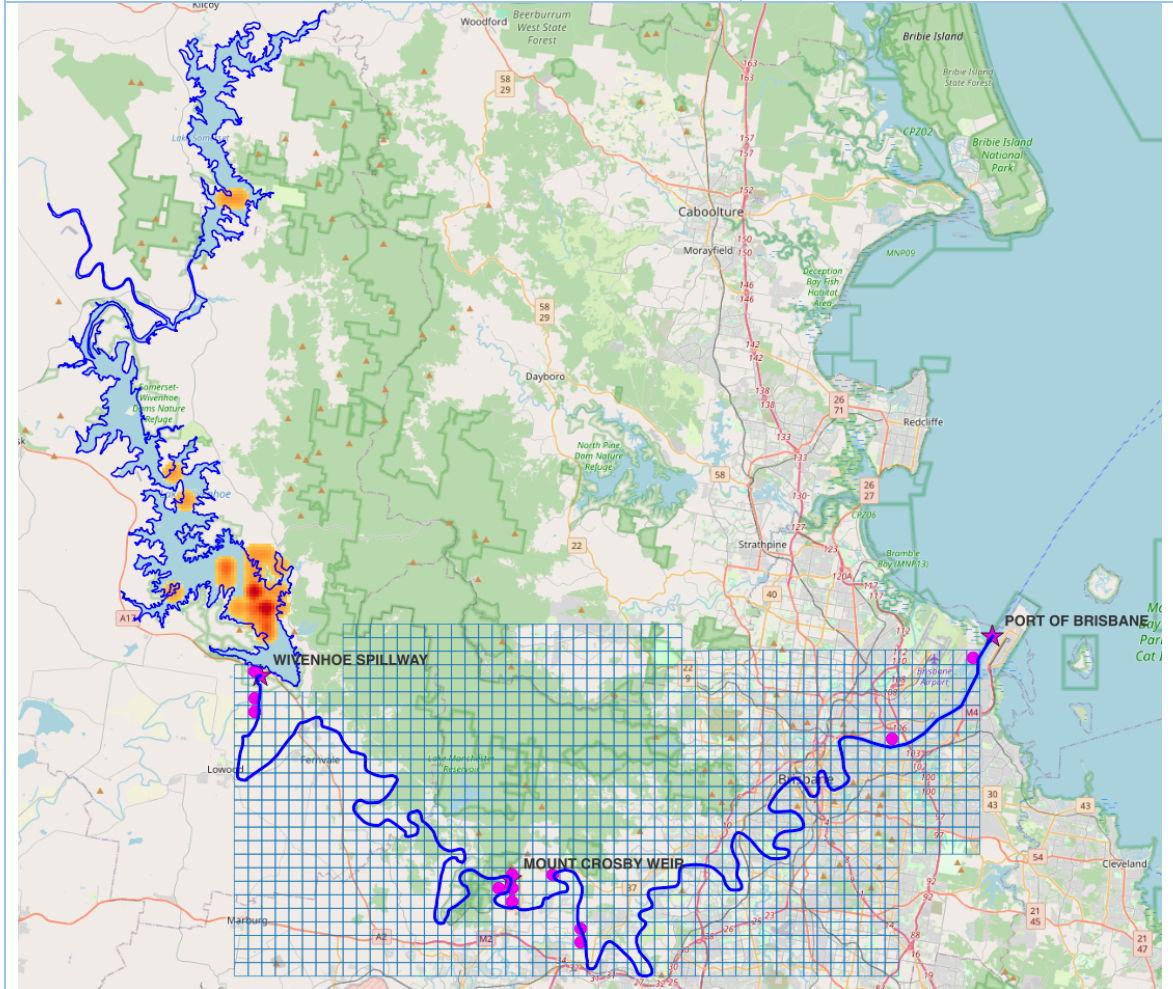


## MOVEMENT

Bass recaptures after 2022  
spill

Tagged (red-orange heat  
map)

Recaptures (purple dots)



## Data sources

Data used in the Brisbane River Crystal Bowl are:

- Tag records and recapture records at <http://crystalbowl.infofishaustralia.com.au/>.
- River flow from Station 143001C Brisbane River at Savages Crossing from <https://water-monitoring.information.qld.gov.au/>.

## Basis for analysis

- Data reliability for fishers based on the sample size over the past 5 years for days fished by taggers and by fishers recapturing fish.
- Data reliability for fish based on average number of fish tagged and recaptured per year over the past 5 years.
- Catch rates calculated as number of fish tagged/fisher day for taggers with a minimum of 12 fisher days (at least 1 per month) to provide a reliable catch rate.
- Undersized Bass are <300mm, legal fish are ≥300 and <500mm and trophy fish are ≥500mm.
- Movement distance calculated as the shortest distance by water from the tag to the recapture location using Google Earth.
- Distance from fisher's home to recapture location is the straight-line distance between locations based on Google Earth coordinates with Local <60km, Intrastate ≥60km and Qld postcodes, Interstate postcodes other than Qld.