



FITZROY RIVER REVIEW 2025

INFORMATION RATING



Key species: Barramundi, King Threadfin, Golden Snapper, Barred Javelin

Fish timeframe: 2016-2025

Fisher timeframe: 2021-2025

The fishing year in the Fitzroy River has been adjusted to Nov-Oct to have the Barramundi closed season in a single quarter (Nov-Jan) to improve the comparability of the data. This update covers from Nov 2024-Oct 2025 and includes the Barramundi open season from Feb-Oct. For long term trends in Barramundi in the river refer to [Fitzroy River Barramundi 2000-2024](#).

Scroll through the dashboard to cover all subjects or for information on a specific subject go to:

FITZROY RIVER REVIEW BARRAMUNDI SEASON 2025

FITZROY ESTUARY LOCATION

FITZROY ESTUARY WATERWAYS

ENVIRONMENTAL CONDITIONS

TYPE OF FISHERY

FISHER ACTIVITY

FISHER EFFORT

FISHER TRAVEL

FEMALE PARTICIPATION

WHERE RECAPTURE FISHERS LIVE

WHERE ROCKHAMPTON FISHERS FISH

KEY SPECIES

BARRAMUNDI

BARRAMUNDI BEFORE AND AFTER NET FREE ZONE

BARRAMUNDI STOCKING

KING THREADFIN

BARRED JAVELIN

GOLDEN SNAPPER

FITZROY BARRA BASH



Product of Infofish Australia



Supported by
Suntag



Supported by
Rockhampton Regional Council

FITZROY RIVER REVIEW BARRAMUNDI SEASON 2025

Fishing activity in the Fitzroy River revolves around the Barramundi open season and since the introduction of the Net Free Zone (NFZ) at the end of 2015 the fishing has attracted both local and visiting fishers. While the fishing is dominated by locals the chance of trophy sized Barra draws visitors from both intrastate and interstate with 20-30% of recaptures being made by visitors. Fishing peaks at the start (Feb) and end (Oct) of the Barramundi season although Feb can be disrupted by wet season flows and flooding which makes fishing very challenging while conditions in Oct are more reliable.

Trophy sized Barramundi and Threadfin (over 1m) attract a lot of attention with most of these fish released making the river more of an experiential fishery although there remains a moderate harvest level for mid-sized fish. This year's Barra Bash competition saw a record 273 trophy length Barramundi recorded.

Sufficient data from tagging, catch records and recruitment has allowed forecasts to be made for Barramundi and Threadfin catch rates and fish lengths. To make forecasts it is necessary to understand the status of the stocks and the key influences. The biggest influence on catch rates is stock level, river flow and water conditions. In 2022 there was a significant effort shift from the river as fishing conditions were tough due to river flows. This resulted in effort shift to the adjacent Capricorn Coast and Raglan areas. This year there was no flooding however the high flow made fishing more challenging from Dec-Mar. Fishing conditions improved after Mar.

The other influence is recruitment. The conditions in 2025 for Barramundi recruitment were marginal and there were low levels of recruits in surveys, catches and reports from fishers collecting bait. From 2021 to 2025 Barramundi recruitment was strong in 2022 and poor/moderate from 2023 to 2025. This has resulted in limited overall improvement in the Barramundi stock although fish from the 2022 recruitment are now reaching or nearing legal size.

12 Mile Creek near Marmor is a benchmark site for Barramundi recruitment however there have not been any new recruits there since 2022, with no recruits recorded there in 2025. The dry and hotter conditions over winter and spring have resulted in the creek dropping to a low level resulting in a fish kill in Oct 2025. Shortly after rain replenished the creek so it may see recruitment in 2026.

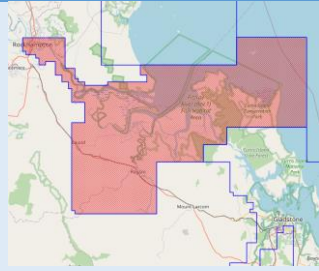
With the time lapse since the NFZ the pool of trophy sized Barramundi has increased significantly with some T20 fishers focused on targetting these fish aided by live scope sounder technology. This season there has been an upsurge in the catch of trophy sized fish. Almost all of these fish are released.

There was strong recruitment of Threadfin in the years prior to the NFZ which boosted stocks considerably. Since then there has been a steady decline in the catch rate however there remains a pool of trophy fish. These fish are very mobile so targeting remains problematic however is improved by the use of sounders and live scope.

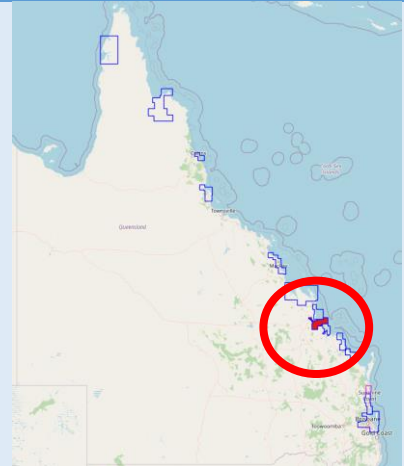
Historically Golden Snapper were an incidental catch in the Fitzroy River occurring in low numbers. Over the last decade those numbers have gradually increased and they are now considered a target species.

The focus on Javelin has fallen away over the last few years. Based on feedback from fishers that target Javelin this is largely due to the high level of Shark depredation making it difficult to land legal sized fish in particular.

FITZROY ESTUARY LOCATION

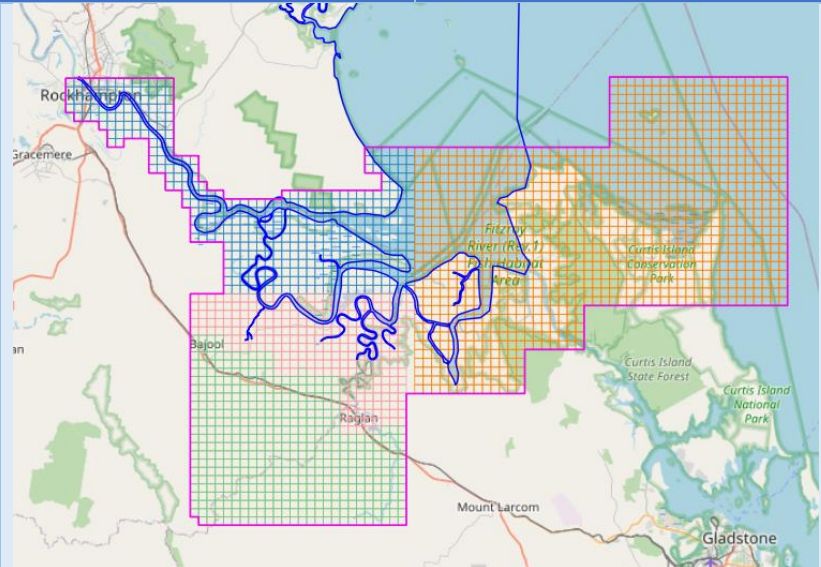


Rockhampton
23.38°S
150.51°E



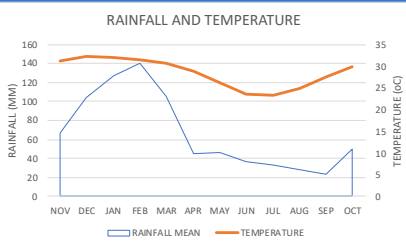
FITZROY ESTUARY WATERWAYS

Fitzroy River grid maps
Fitzroy River FRR
Port Alma PAR
Curtis Island CIS
Raglan RAG
Net Free Zone (blue outline)



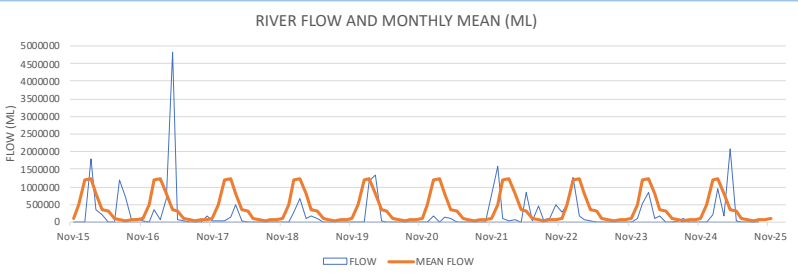
ENVIRONMENTAL CONDITIONS

Mean monthly rainfall (mm)
Mean max Temperature (oC)
All years

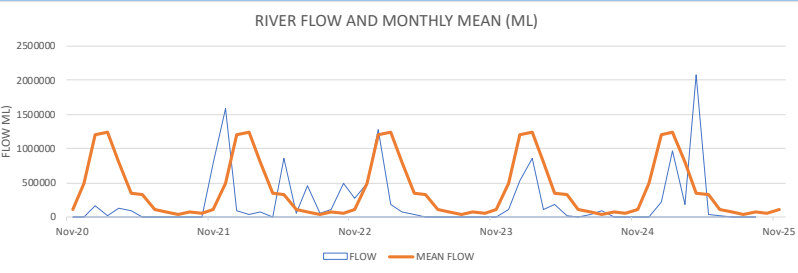


RIVER FLOW

Fitzroy River flows
Monthly flow (ML)
Mean monthly flow (ML)
Nov 2015-Oct 2025

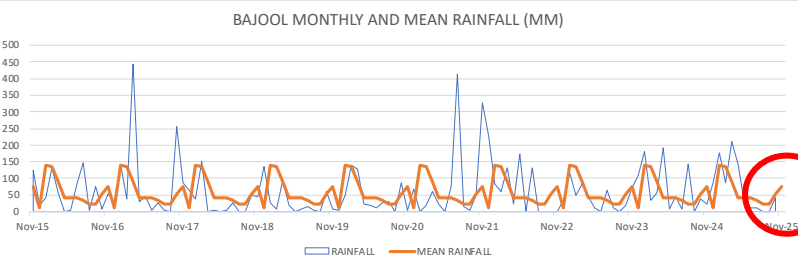


Fitzroy River flows
Monthly flow (ML)
Mean monthly flow (ML)
Nov 2020-Oct 2025



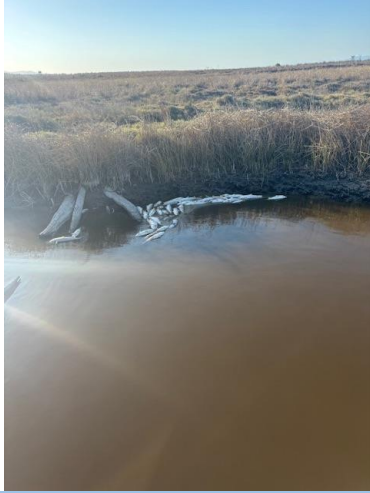
RAINFALL

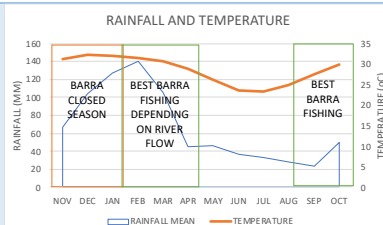
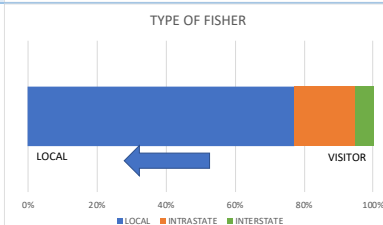
Raglan
Bajool rainfall (mm)
Nov 2015-Oct 2025
Fish kill 12 Mile Creek (red circle)



FISH KILL

12 Mile Creek
Oct 2025
Fish kill
Mullet 500+
Scat 150+
Barramundi 12+
Tilapia 16+

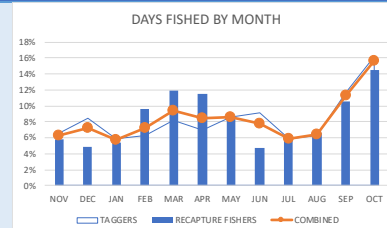


TYPE OF FISHERY																																			
DATA RELIABILITY																																			
Sample size (days fished) Taggers (blue arrow) Recap fishers (orange arrow) Confidence % Error % 2021-2025	<table><tr><td>Reliability level</td><td colspan="2">LOW</td><td colspan="2">MODERATE</td><td colspan="2">MODERATE</td><td colspan="2">HIGH</td></tr><tr><td>Samples</td><td>10</td><td>41</td><td>68</td><td>271</td><td>384</td><td>664</td><td></td></tr><tr><td>Confidence</td><td colspan="2">80%</td><td>80%</td><td>90%</td><td>90%</td><td>95%</td><td>99%</td></tr><tr><td>Error</td><td colspan="2">20%</td><td>10%</td><td>10%</td><td>5%</td><td>5%</td><td>5%</td></tr></table> <div><div></div><div></div></div>		Reliability level	LOW		MODERATE		MODERATE		HIGH		Samples	10	41	68	271	384	664		Confidence	80%		80%	90%	90%	95%	99%	Error	20%		10%	10%	5%	5%	5%
	Reliability level	LOW		MODERATE		MODERATE		HIGH																											
	Samples	10	41	68	271	384	664																												
	Confidence	80%		80%	90%	90%	95%	99%																											
	Error	20%		10%	10%	5%	5%	5%																											
Fishing seasonality Barramundi Mean Rainfall (mm) Mean Day Temperature (oC)	Best Barramundi fishing Feb-Apr Sep-Oct																																		
Mean monthly flow (ML) Days fished combined Taggers Recapture fishers Nov 2020-Oct 2025	Months most effort combined Oct Sep Mar																																		
Harvest or experiential fishery Release rate of recaptured legal Barramundi-Threadfin Nov 2020-Oct 2025	Legal fish kept rate Legal Barramundi Kept 300 81 (27%) Legal Threadfin Kept 26 16 (62%)																																		
Local or visitor fishery Where recapture fishers live Nov 2020-Oct 2025	Recapture fishers 559 Local 432 (77%) Visitor 127 (23%)																																		
Gender of recapture fishers (ex-taggers) Nov 2020-Oct 2025	Recaptures 397 Male 378(95%) Female 19 (5%)																																		

FISHER ACTIVITY

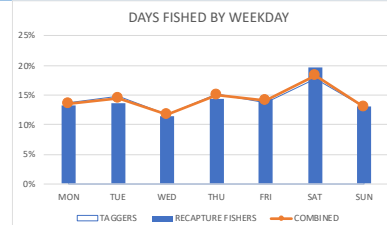
Monthly activity river
FRR, PAR, CIS
Days fished
Taggers (1090)
Recapture fishers (513)
Nov 2020-Oct 2025

	Month	%
Taggers	Oct	16%
	Sep	12%
Recaps	Oct	14%
	Mar	12%
	Apr	12%



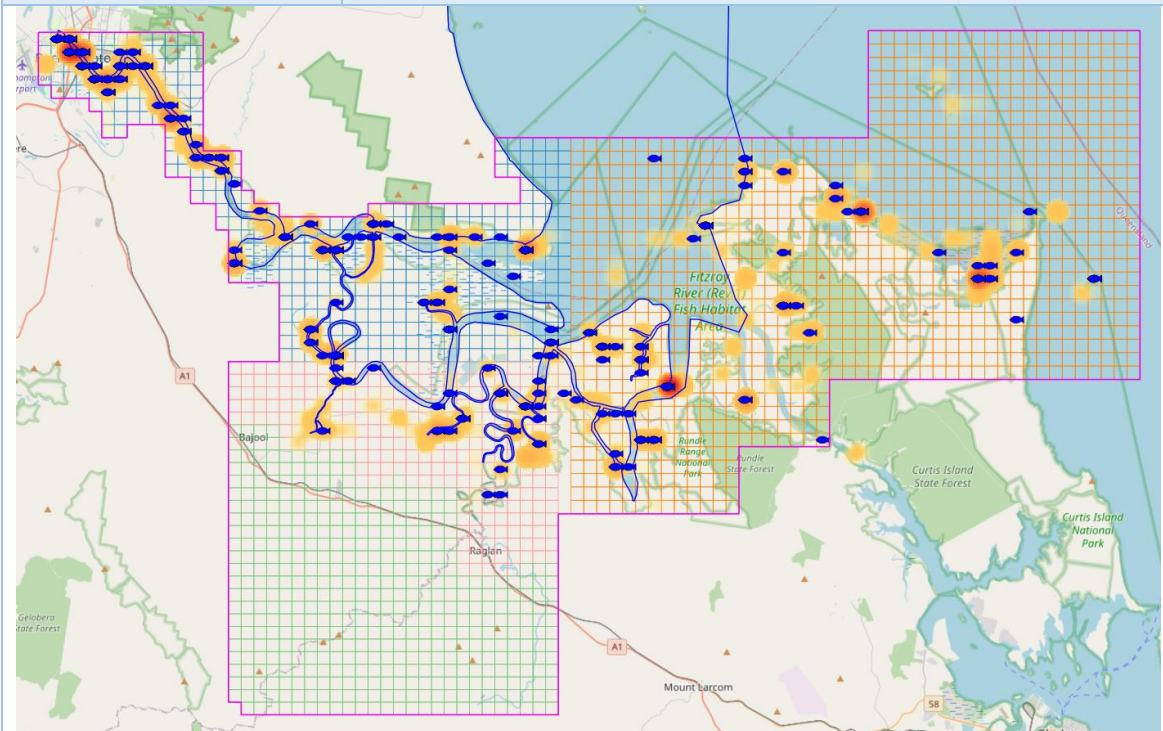
Weekday activity river
FRR, PAR, CIS
Days fished
Taggers (1090)
Recapture fishers (513)
Nov 2020-Oct 2025

	Weekdays	%
Taggers		69%
Recapture fishers		67%
Weekends		
Taggers		31%
Recapture fishers		33%



Fisher activity
FRR, PAR, CIS
Fishers (red-orange heat map)
Recapture fishers (blue fish)
Nov 2020-Oct 2025

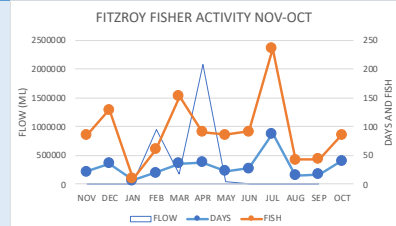
Fish tagged 4121
Fish recaptured 591



FISHER EFFORT

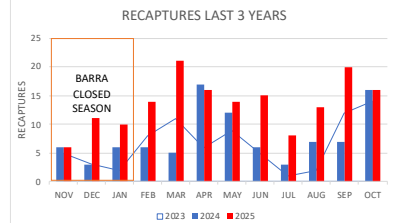
**Monthly activity river
T20 fishers (including
taggers)
FRR, PAR, CIS
Days fished
Nov 2024-Oct 2025**

Month	Days	Fish
Nov-Jan	65	224
Feb-Apr	94	305
May-Jul	139	414
Aug-Oct	73	173
Total	371	1116



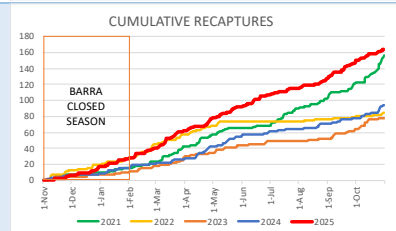
**Monthly recaptures
Nov 2023-Oct 2025**

	2023	2024	2025
Nov-Jan	10	15	27
Feb-Apr	25	28	51
May-Jul	15	21	35
Aug-Oct	28	30	51
Total	78	94	148

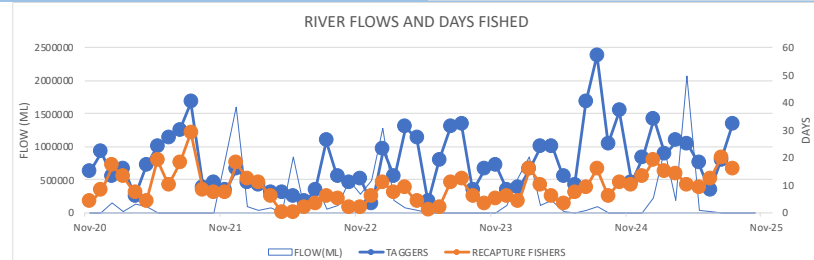


**Cumulative recaptures
Nov 2020-Oct 2025**

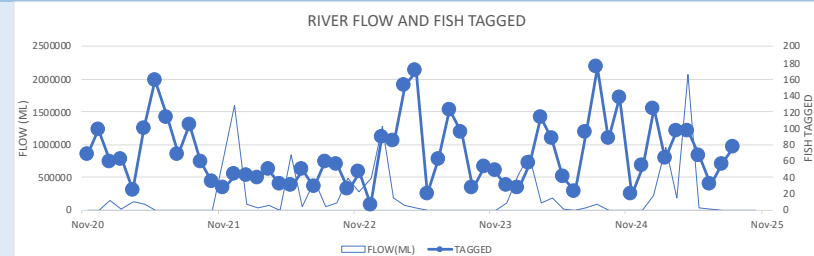
	Nov-Oct
2021	156
2022	84
2023	78
2024	94
2025	171



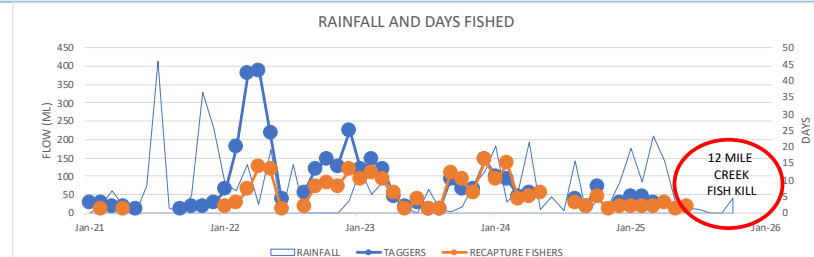
**River flows
Days fished
Taggers
Recapture fishers
FRR, PAR, CIS
Nov 2020-Oct 2025**



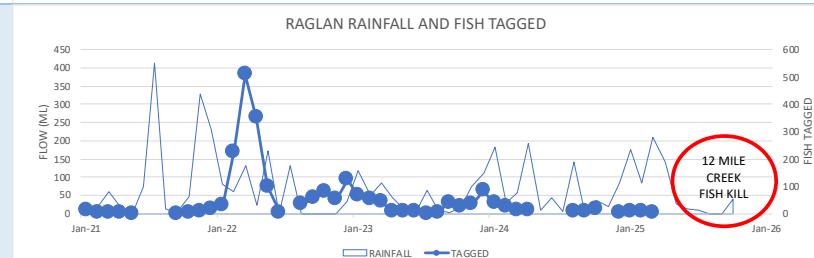
**River flows
Fish tagged
FRR, PAR, CIS
Nov 2020-Oct 2025**



**Raglan rainfall
Days fished
Taggers
Recapture fishers
RAG
Nov 2020-Oct 2025**



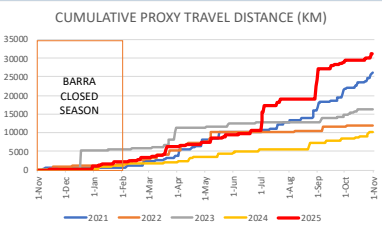
**Raglan rainfall
Fish tagged
RAG
Nov 2020-Oct 2025**



FISHER TRAVEL

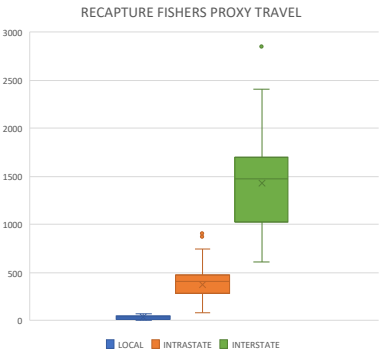
**Cumulative distance (km)
home to recapture
location
Nov 2020-Oct 2025**

	Nov-Oct
2021	26030
2022	11944
2023	16207
2024	10156
2025	31332



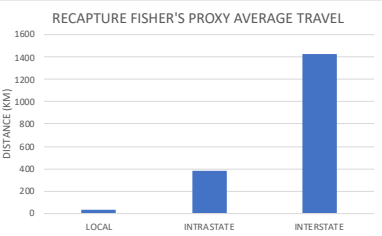
**Distance (km) home to
recapture location
Bars show distance range
Dots show outliers
Nov 2020-Oct 2025**

	Trips	Range (km)
Local	445	1-74
Intrastate	102	80-910
Interstate	31	610-2855



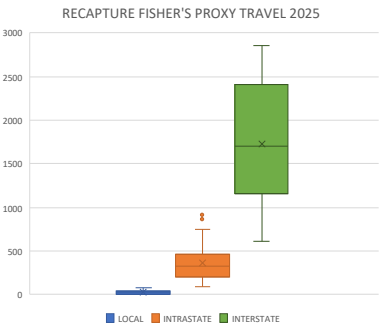
**Average distance (km)
home to recapture
location
Nov 2020-Oct 2025**

	Trips	Av dist
Local	442	31
Intrastate	101	377
Interstate	30	1412



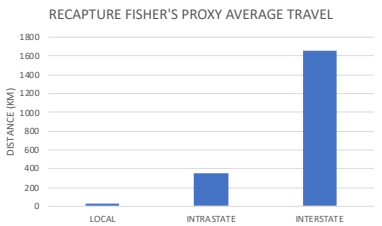
**Distance (km) home to
recapture location
Bars show distance range
Dots show outliers
Nov 2024-Oct 2025**

	Trips	Range (km)
Local	129	1-73
Intrastate	28	93-910
Interstate	11	610-2855



**Average distance (km)
home to recapture
location
Nov 2024-Oct 2025**

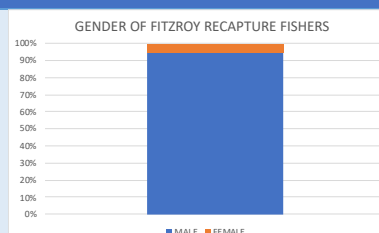
	Trips	Av dist
Local	126	26
Intrastate	27	351
Interstate	10	1655



FEMALE PARTICIPATION

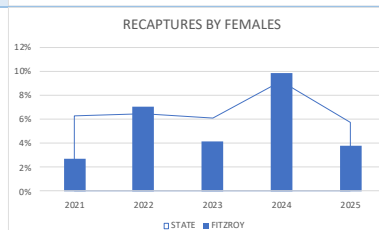
Percentage of female fishers recapturing fish (ex-taggers)
Fitzroy
Nov 2020-Oct 2025

Females recapturing fish
2021-2025 5%
2025 4%



Percentage of female fishers recapturing fish (ex-taggers)
State
Fitzroy
Nov 2020-Oct 2025

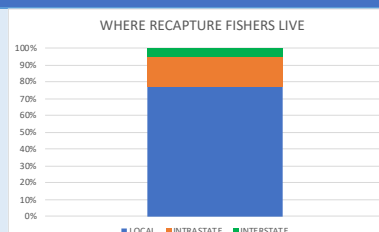
	State	Fitzroy
2021	6%	3%
2022	6%	7%
2023	6%	4%
2024	9%	10%
2025	6%	4%



WHERE RECAPTURE FISHERS LIVE

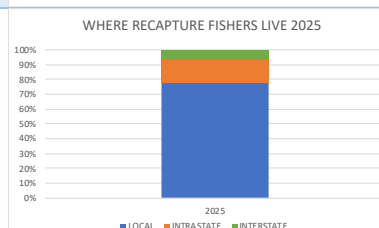
Where recapture fishers live
Local
Intrastate
Interstate
Nov 2020-Oct 2025

Fishers 573
Local 442 (77%)
Intrastate 101 (17%)
Interstate 30 (5%)



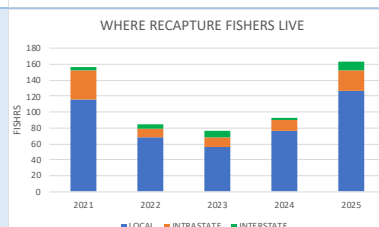
Where recapture fishers live
Local
Intrastate
Interstate
Nov 2024-Oct 2025

Fishers 163
Local 126 (77%)
Intrastate 27 (17%)
Interstate 10 (6%)



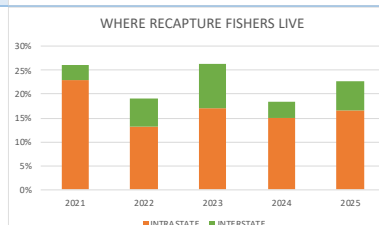
Where recapture fishers live
Local (< 80km)
Nov 2020-Oct 2025

	Nov-Oct	Local
2021		116 (74%)
2022		68 (81%)
2023		56 (74%)
2024		76 (82%)
2025		129 (77%)

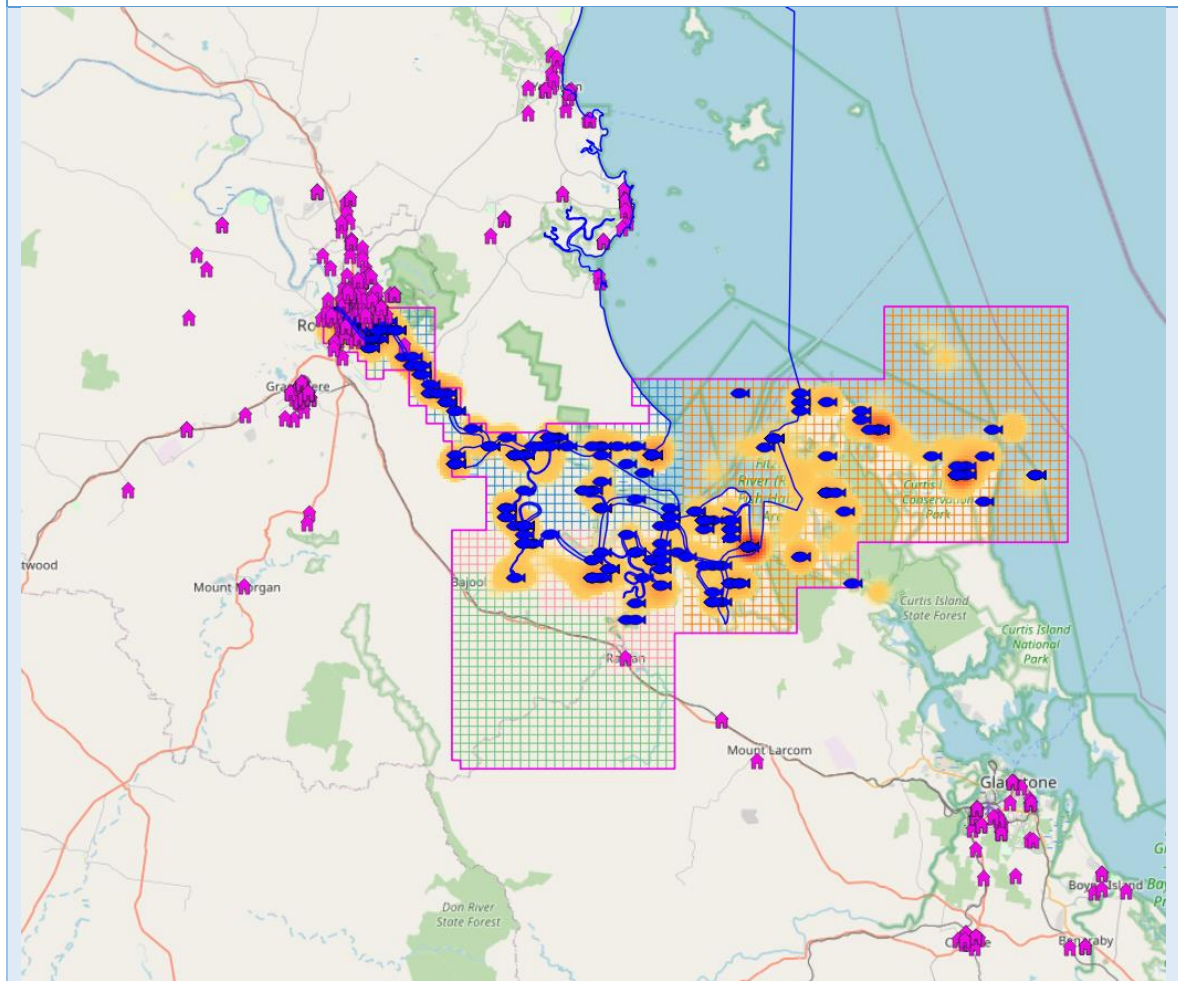


Where recapture fishers live
Intrastate (>80km)
Interstate)
Nov 2020-Oct 2025

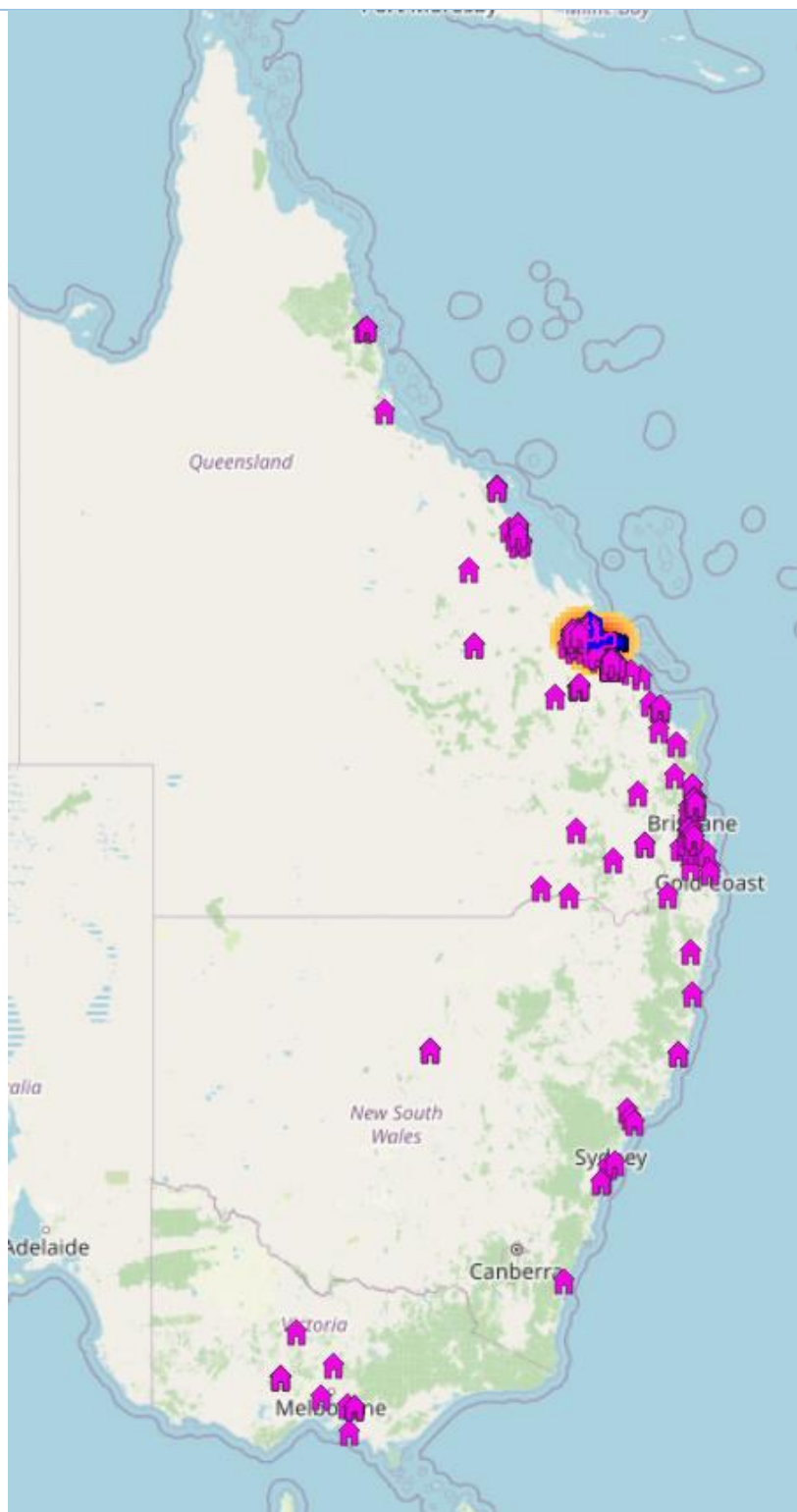
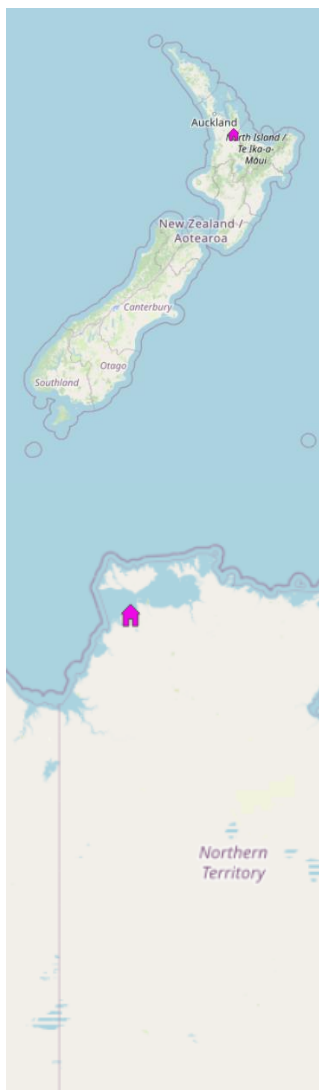
	Nov-Oct	Elsewhere
2021		41 (26%)
2022		16 (19%)
2023		20 (26%)
2024		17 (19%)
2025		39 (23%)



**Where recapture fishers
live (pink houses)
Local (445)
FRR, PAR, CIS, RAG
Nov 2020-Oct 2025**

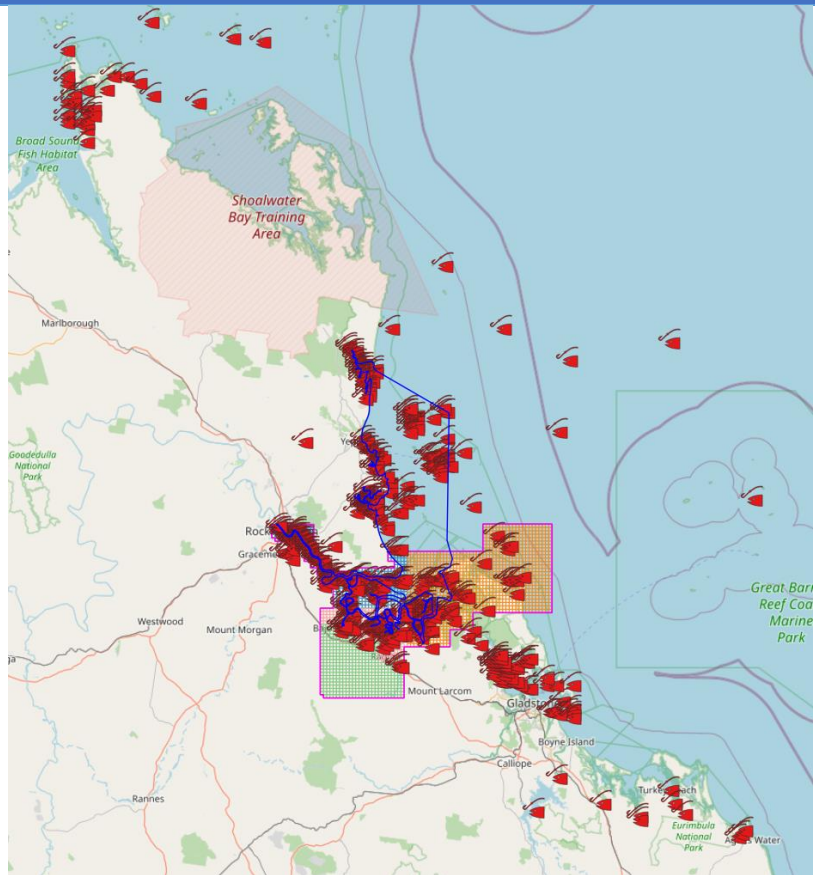


**Where recapture fishers
live (pink houses) (578)
Local (445)
Intrastate (102)
Interstate (31)
FRR, PAR, CIS, RAG
Nov 2020-Oct 2025**

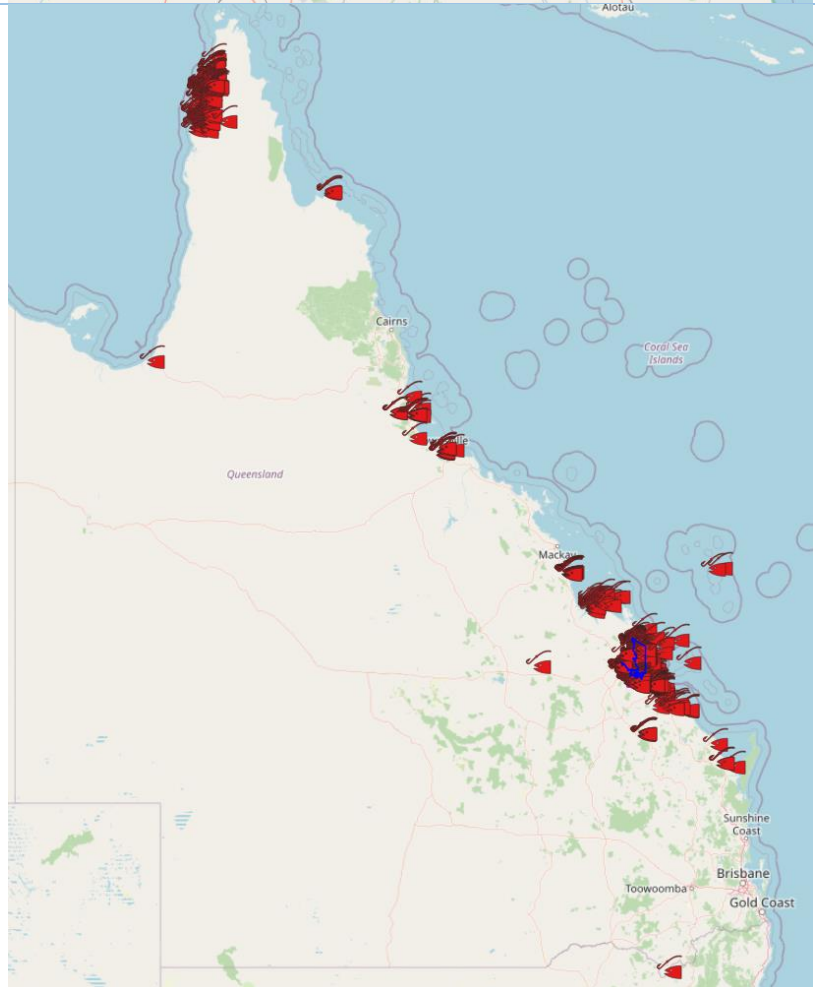






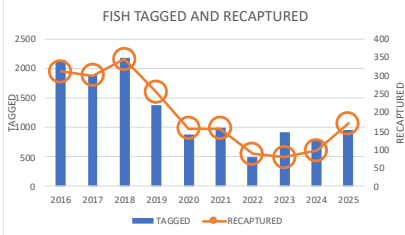
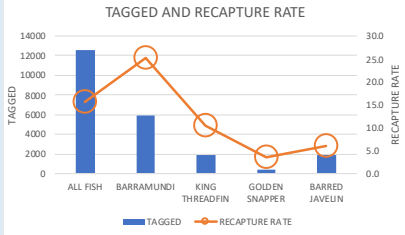
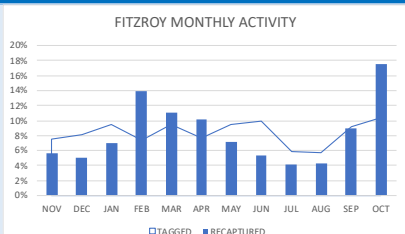
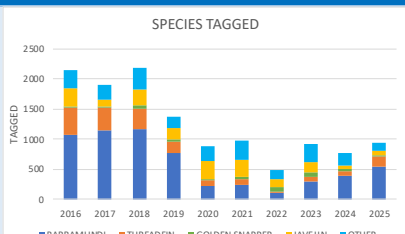
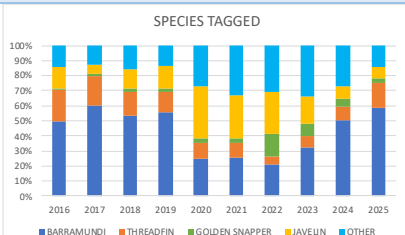
WHERE ROCKHAMPTON FISHERS FISH

**Where Rockhampton
taggers fish (red fish)**
Local
FRR, PAR, CIS, RAG
Nov 2020-Oct 2025



**Where Rockhampton
taggers fish (red fish)**
Intrastate
Interstate
Nov 2020-Oct 2025



KEY SPECIES			
BARRAMUNDI	KING THREADFIN		BARRED JAVELIN
			
GOLDEN SNAPPER			
			
TAGGED			
Fish tagged (12601) Recaptured (1961) FRR, PAR, CIS Nov 2015-Oct 2025	High	Low	Now
	Tagged		
	2018	2022	2025
	2182	491	946
	Recaptured		
	2018	2023	2025
	346	79	171
Fish tagged and recaptured FRR, PAR, CIS Nov 2015-Oct 2025	Recapture rate		
	All fish		15.6%
	Barramundi		25.2%
	King Threadfin		10.4%
	Golden Snapper		3.5%
Barred Javelin		5.9%	
			
			
TIMEFRAME			
Month (ex-competitions) Fish tagged (10450) Recaptured (1949) Nov 2015-Oct 2025	Tagged	Month	
		Mar (11%)	
		Jan (10%)	
	Recaptured	Oct (18%)	
		Feb (14%)	
		Mar (11%)	
			
SPECIES COMPOSITION			
Species composition Tagged FRR, PAR, CIS Nov 2015-Oct 2025	Species	Tagged	
	All fish	12601	
	Barramundi	5967	
	Threadfin	1872	
	Javelin	1903	
Golden Snapper	401		
Other species	2458		
			
Species composition Percentage tagged FRR, PAR, CIS Nov 2015-Oct 2025	Species	Tagged	
	Barramundi	47%	
	Threadfin	15%	
	Javelin	15%	
	Golden Snapper	3%	
Other species	20%		
			

TAG LOCATIONS

FRR, PAR, CIS

Fish tagged (red-orange
heat map)

Recaptured (blue dots)
RAG

Fish tagged (purple-red
heat map)

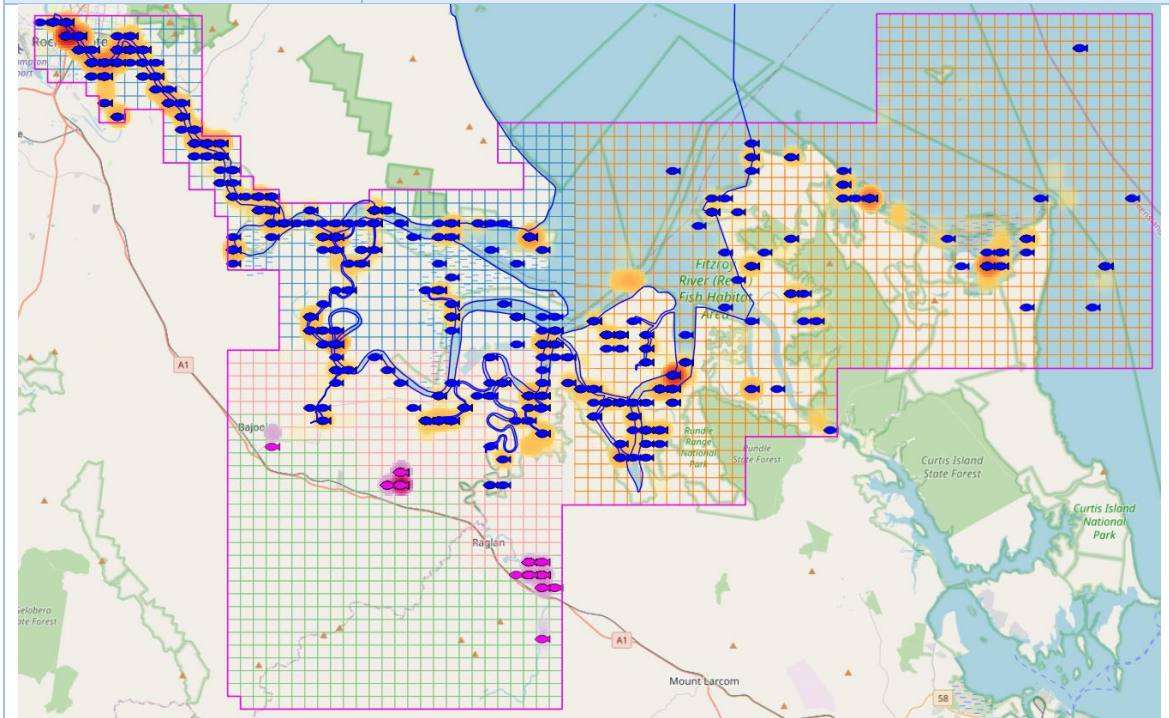
Recaptured (pink dots)
Nov 2015-Oct 2025


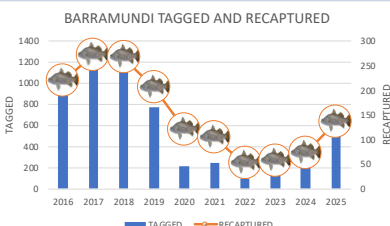

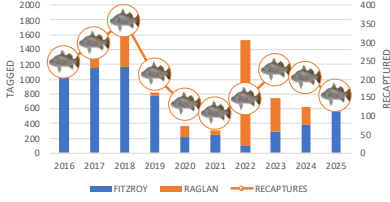
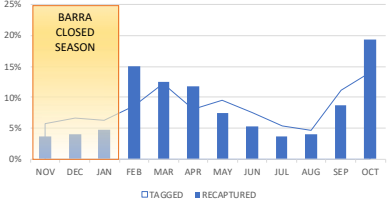
Tagged FRR, PAR, CIS 12,601

Recaptured FRR, PAR, CIS 1,955

Tagged RAG 3,553

Recaptured RAG 559

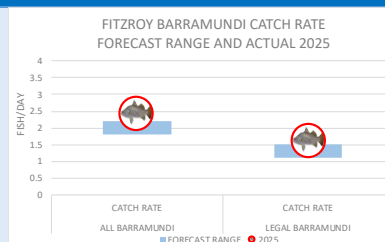


BARRAMUNDI																								
	Barramundi open season Feb-Oct																							
DATA RELIABILITY																								
Sample size (av fish/year)	<table><tr><td>Reliability level</td><td>LOW</td><td>MODERATE</td><td>MODERATE</td><td>HIGH</td></tr><tr><td>Samples</td><td>10</td><td>41</td><td>68</td><td>271</td></tr><tr><td>Confidence</td><td>80%</td><td>80%</td><td>90%</td><td>90%</td></tr><tr><td>Error</td><td>20%</td><td>10%</td><td>10%</td><td>5%</td></tr></table>				Reliability level	LOW	MODERATE	MODERATE	HIGH	Samples	10	41	68	271	Confidence	80%	80%	90%	90%	Error	20%	10%	10%	5%
Reliability level	LOW	MODERATE	MODERATE	HIGH																				
Samples	10	41	68	271																				
Confidence	80%	80%	90%	90%																				
Error	20%	10%	10%	5%																				
Tagged (blue arrow)																								
Recaptures (orange arrow)																								
Confidence %																								
Error %																								
2021-2025																								
TAGGED																								
Barramundi tagged and recaptured FRR, PAR, CIS Nov 2015-Oct 2025	High	Low	Now																					
	Fish tagged																							
	2015	2022	2024																					
	1294	103	566																					
	Recaptured																							
	2017	2022	2025																					
	271	51	136																					
Barramundi tagged and recaptured RAG Nov 2015-Oct 2025	High	Low	Now																					
	Fish tagged																							
	2022	2019	2025																					
	1418	52	31																					
	Recaptured																							
	2023	2021	2025																					
	166	2	18																					
Barramundi tagged and recaptured combined FRR, PAR, CIS (blue) RAG (orange) Nov 2015-Oct 2025	High	Low	Now																					
	Fish tagged																							
	2018	2021	2025																					
	1826	308	597																					
	Recaptured																							
	2018	2021	2025																					
	356	105	197																					
Month Fish tagged (4438) Recaptured (503) FRR, PAR, CIS Nov 2015-Oct 2025	Tagged	Month	Mar (13%) Oct (13%) Oct (19%) Feb (16%) Mar (12%)																					

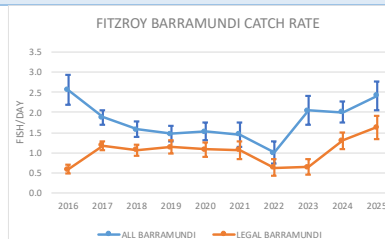
CATCH RATE T20 FISHERS

Catch rate forecast and actual
T20 fishers
FRR, PAR, CIS
Feb-Oct 2025
(Barramundi open season)

	Forecast	Actual
All	1.8-2.2	2.4
Legal	1.1-1.5	1.6



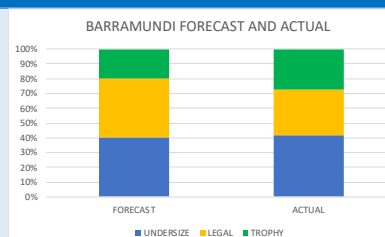
Catch rates
Fish/day
FRR, PAR, CIS
2015-2025
(Barramundi open season)



LENGTHS

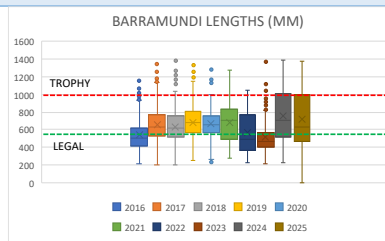
Fish lengths percentage
Undersize <580mm
Legal 580-1000mm
Trophy 1000+mm
Feb-Oct 2025 forecast
Feb-Oct 2025 actual

	Forecast	Actual
Undersize	40%	41%
Legal-trophy	40%	32%
Trophy	20%	27%



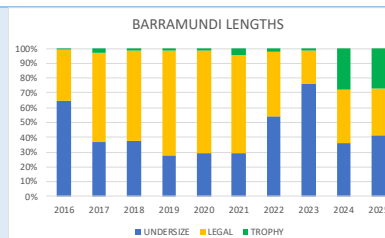
T20 lengths of fish (mm)
Bars show length range
Dots show outliers
Nov 2015-Oct 2025

High	Low	Now
Average length		
2024	2023	2025
761	519	720
Max length		
2024	2022	2025
1385	1050	1380

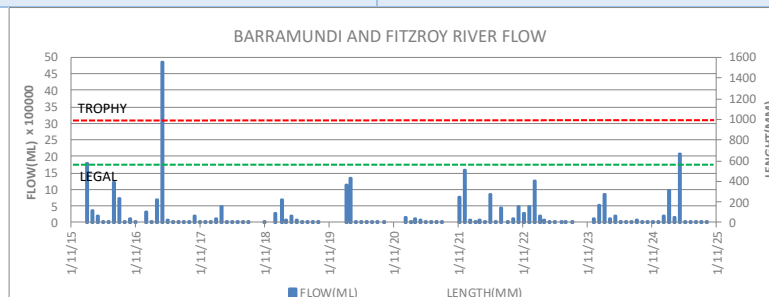


Fish lengths percentage
Undersize <580mm
Legal 580-1000mm
Trophy 1000+mm
Nov 2015-Oct 2025

High	Low	Now
Legal-Trophy		
2019	2023	2025
70%	23%	31%
Trophy		
2024	2023	2025
28%	1%	27%



River flow and Barramundi
Nov 2015-Oct 2025
Floods
2017
2022 (multiple flows)
2025



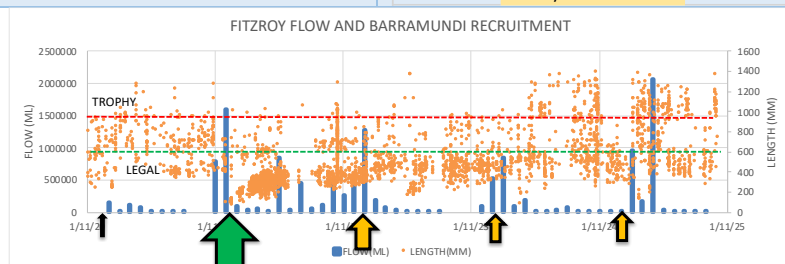
RECRUITMENT

Barramundi recruitment
Jan-Apr
Grades A-E
A strong
B good
C moderate
D poor
E poor

Recruitment based on
standardised castnet surveys
in the river and adjacent
nursery areas and tagging

YEAR	LEVEL	GRADE
2016	POOR/MODERATE	D
2017	MODERATE	C
2018	POOR	E
2019	POOR	E
2020	GOOD	B
2021	POOR	E
2022	STRONG	A
2023	POOR/MODERATE	D
2024	POOR/MODERATE	D
2025	POOR/MODERATE	D

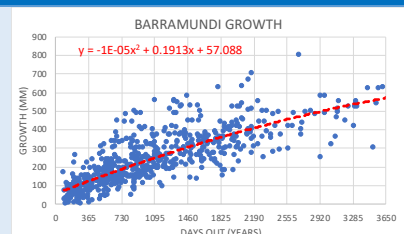
River flow and Barramundi
Arrows show recruitment
Large arrow (strong)
Medium arrows
(moderate)
Small arrows (poor)
Nov 2020-Oct 2025



GROWTH

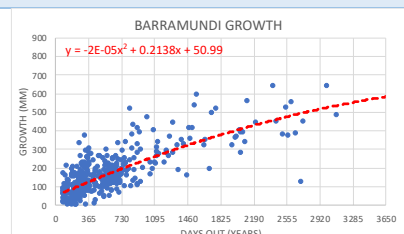
Barramundi growth
FRR, PAR, CIS
Tagged 200-580mm
Growth/year (mm)
Recaptures (630)
Fish recaptured
Nov 2015-Oct 2025

	Growth/year (mm)
Year 1	126
Year 2	191
Year 3	255
Year 4	315
Year 5	373



Barramundi growth
RAG
Tagged 200-580mm
Growth/year (mm)
Recaptures (463)
Fish tagged
Nov 2015-Oct 2025

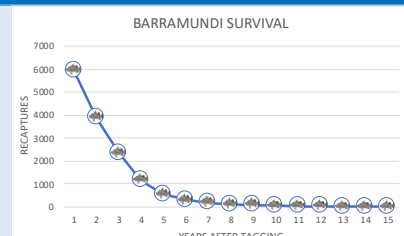
	Growth/year (mm)
Year 1	126
Year 2	196
Year 3	261
Year 4	321
Year 5	375



SURVIVAL

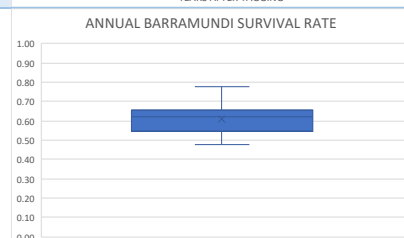
Barramundi survival
Recaptures years after
tagging
All years

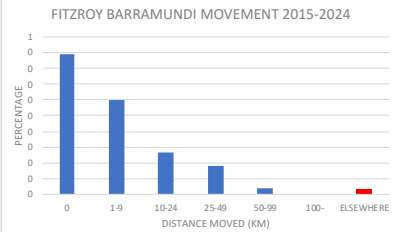
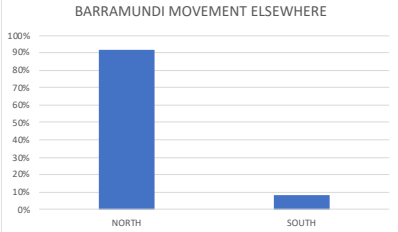
Recaptures	5923
Max time out (years)	16.4



Barramundi survival
Annual survival rate
All years

Annual survival rate	
Average	0.61 (61%)
Range	0.48-0.78



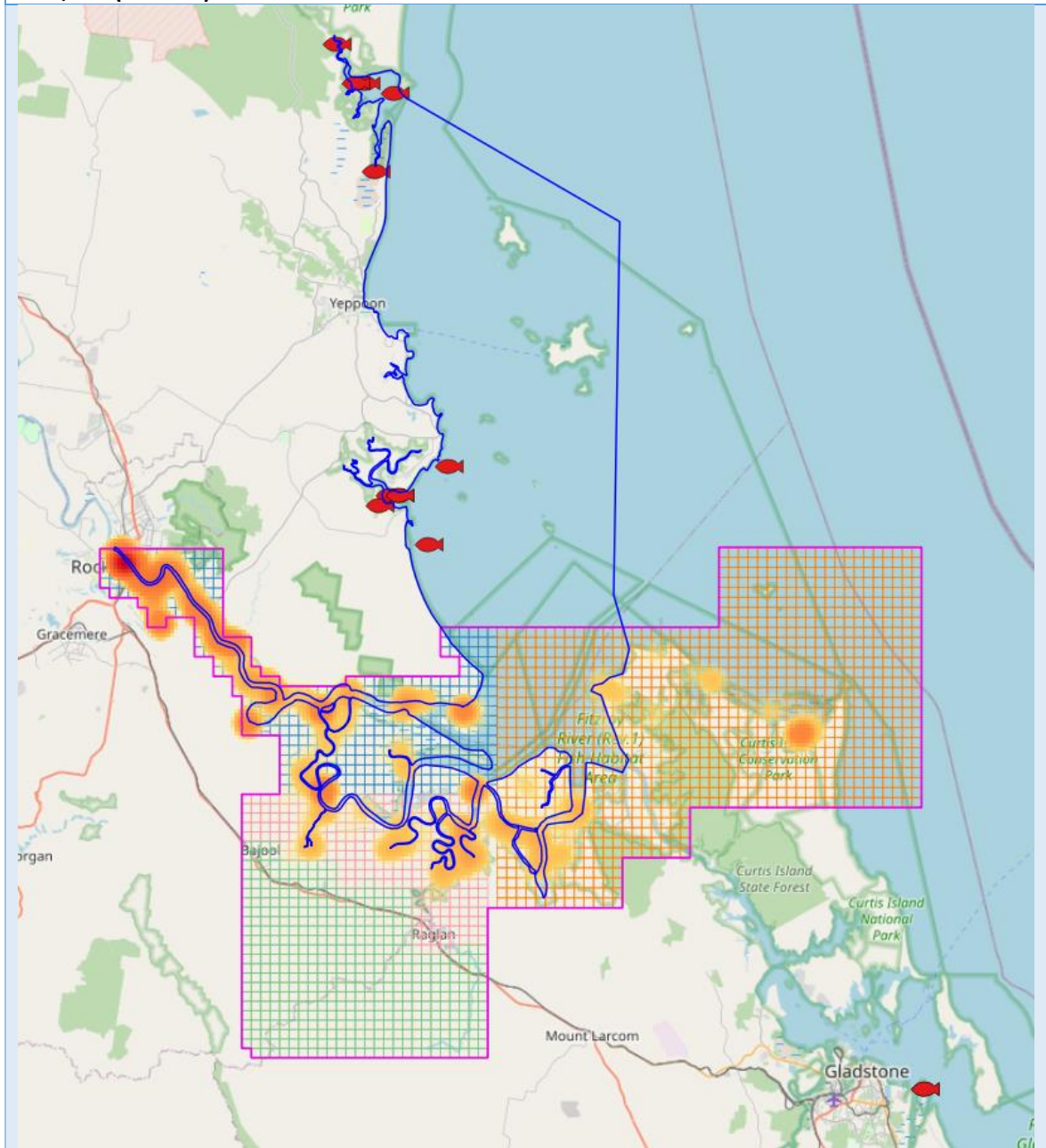
MOVEMENT			
Barramundi movement (km) In FRR, PAR, CIS (1081) Outside FRR, PAR, CIS (12) Tagged Nov 2015-Oct 2025	Moved (km)	Fish	
	0	445 (41%)	
	1-9	337 (31%)	
	10-24	151 (14%)	
	25-49	115 (11%)	
	50-99	21 (2%)	
Barramundi movement outside FRR, PAR, CIS (12) Tagged Nov 2015-Oct 2025	Elsewhere	12 (1%)	
	North	Moved 11 (92%)	
	South	1 (8%)	

**Barramundi locations
tagged FRR, PAR, CIS
Tagged (red-orange heat
map)**

Recaptured outside (12)

Nov 2015-Oct 2025

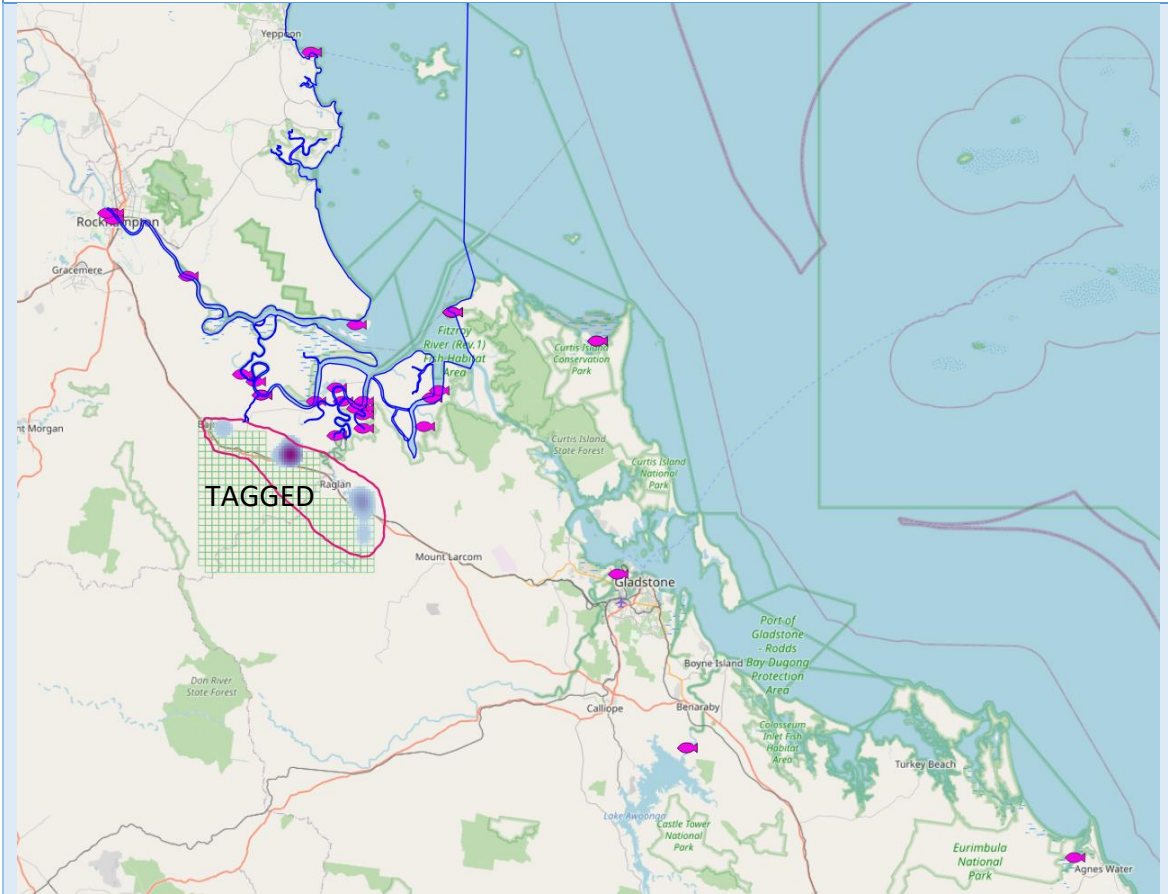
**Recaptured outside FRR,
PAR, CIS (red fish)**



Barramundi locations tagged in freshwater-brackish RAG (purple-blue heat map)

Recaptured outside (pink fish)

Tagged Nov 2015-Oct 2025



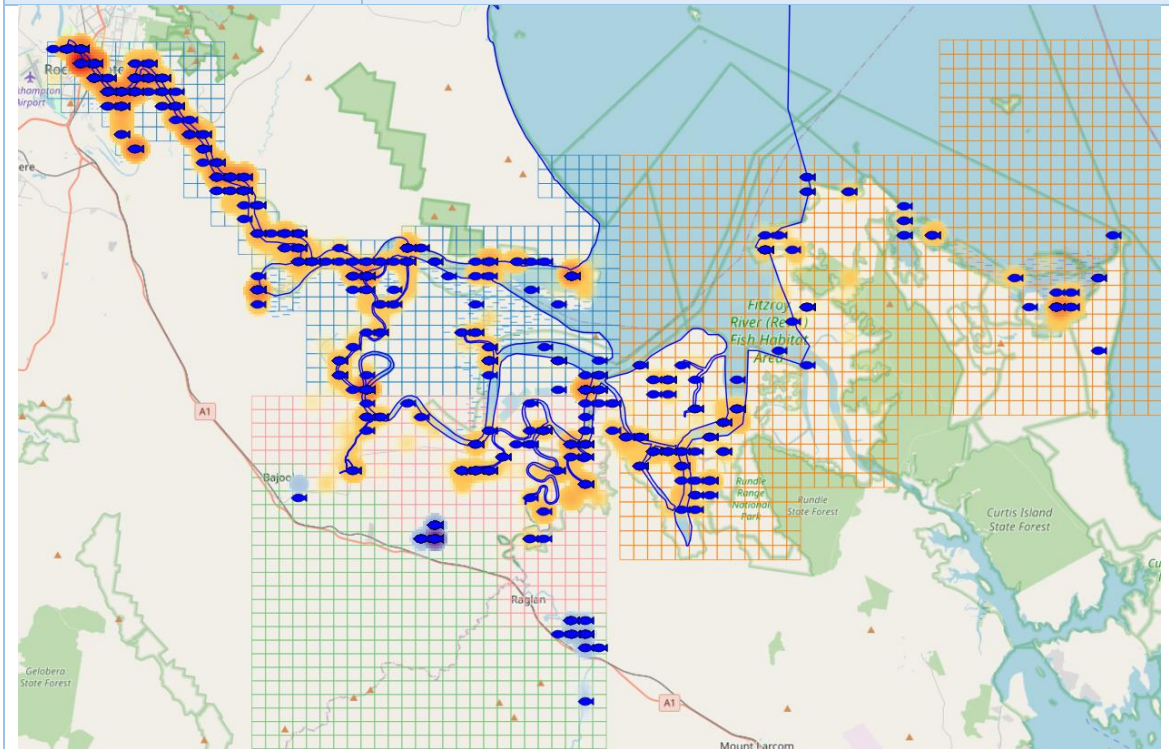
FATE			
Recfishers (ex-taggers) Barramundi Legal fish kept or released Feb-Oct 2021-2025 (open season)	Legal Barramundi	300	<div> RECAPTURED LEGAL BARRAMUNDI FATE </div>
	Kept	81 (27%)	
Keeping legal Barramundi Recfishers (ex-taggers) Feb-Oct 2021-2025 (open season)	Released	219 (73%)	<div> LEGAL BARRAMUNDI KEPT </div>
	Year	% kept	
	2016	62%	
	2021	43%	
	2025	16%	

TAG LOCATIONS

Locations Barramundi
Tagged FRR, PAR, CIS
(red-orange heat map)
Tagged RAG
(purple heat map)
Recaptured
(blue fish)
Nov 2015-Oct 2025

Tagged FRR, PAR, CIS 5,937
Recaptured FRR, PAR, CIS 1,497

Tagged RAG 3,553
Recaptured RAG 559



BARRAMUNDI BEFORE AND AFTER NET FREE ZONE

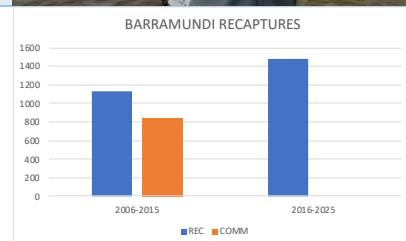
Recaptures since 2025
Barra season opening
(released)
V08021 1300mm
U21789 1320mm tagged
2009 and out for 14.5
years



Recaptures before and
after NFZ
Recreational (Rec)
Commercial (Comm)
FRR, PAR, CIS
2006-2015
2016-2025

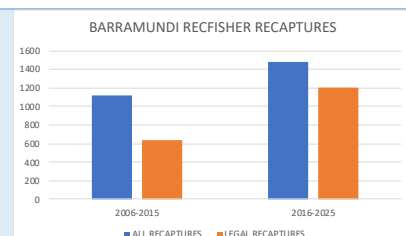
	Rec	Comm
06-15	1137	839
16-25	1483	0

*Only a proportion of comm
recaptures were reported



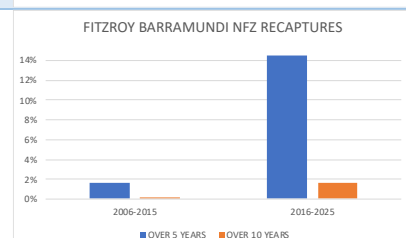
Recreational recaptures
All
Over legal
FRR, PAR, CIS
2006-2015
2016-2025

Recaps	All	Legal
06-15	1120	639 (57%)
16-25	1483	1183 (80%)



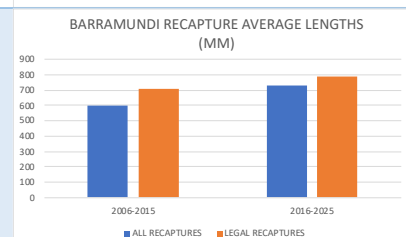
Recaptures of fish out for
5 and 10 years
FRR, PAR, CIS
2006-2015
2016-2025

Recaps	5+yrs	10+yrs
06-15	31	2
16-25	215	27
Increase	694%	1350%
Longest out yrs		16.4



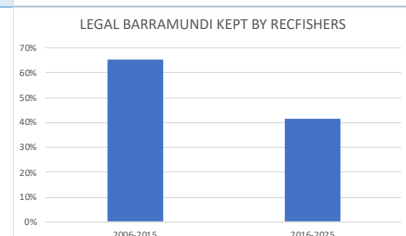
Recreational recaptures
Average length (mm)
FRR, PAR, CIS
2006-2015
2016-2025

Length	All	Legal
06-15	602	709
16-25	730	786
Increase	21%	11%



Legal Barramundi kept by
recfishers (ex-taggers)
FRR, PAR, CIS
2006-2015
2016-2025

Recaps	Legal	Kept
06-15	425	278 (65%)
16-25	863	360 (42%)



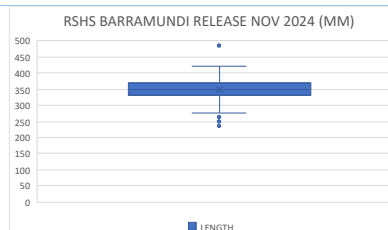
BARRAMUNDI STOCKING

Stocking by Rockhampton
State High School
Aquaculture Program



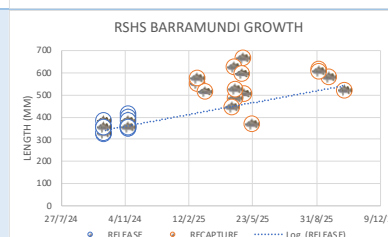
Tagged Barramundi batch
release
Lengths (mm)
Nov 2024

Barramundi released 723
Average length 349



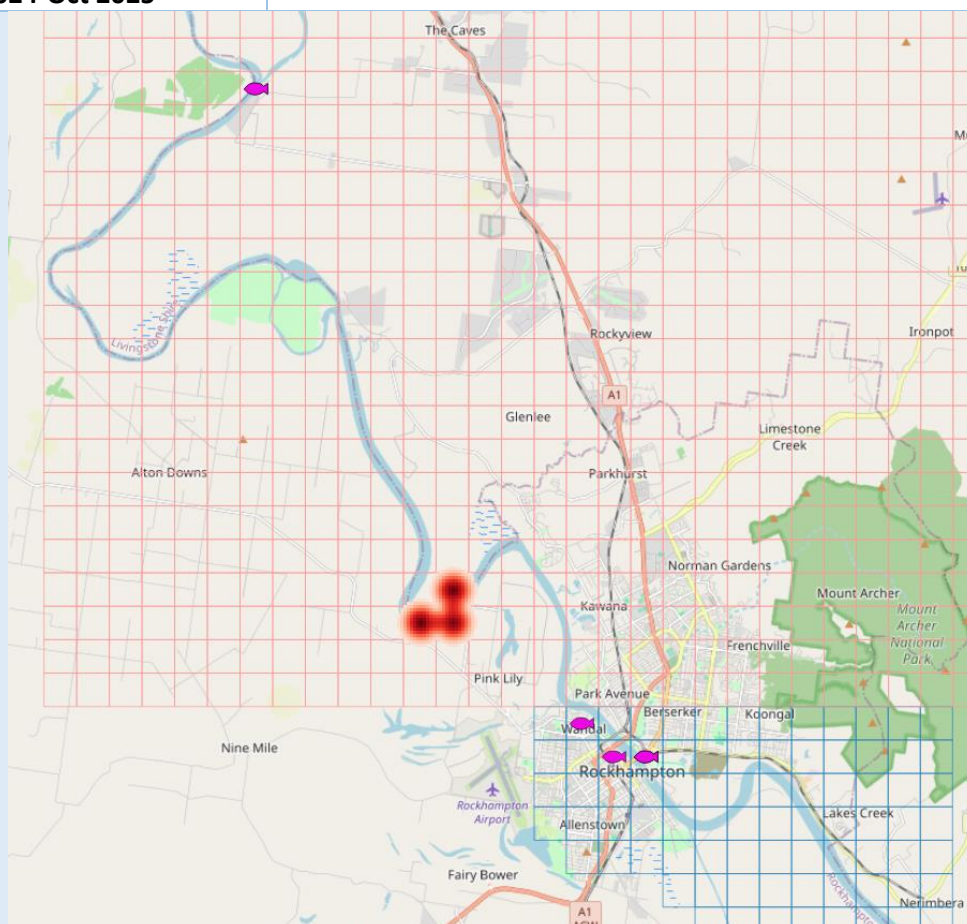
Tagged Barramundi batch
release
Growth

Recaptures 19



Tagged Barramundi batch
release
Release locations (red heat
map)
Recapture locations (pink
fish)
Nov 2024-Oct 2025

Recaptures 19
Same area 2
Up river 3
Down river over barrage* 14
Note* 4 more fish recaptured below barrage not recorded
Recapture rate 2.6%



KING THREADFIN



Year
Nov-Oct

DATA RELIABILITY

Sample size (av fish/year)
Tagged (blue arrow)
Recaptures (orange arrow)
Confidence %
Error %
2021-2025

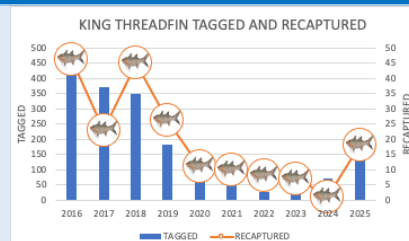
Reliability level	LOW		MODERATE		MODERATE	HIGH	
Samples	10	41	68	271	384	664	
Confidence	80%		80%		90%	95%	99%
Error	20%		10%		10%	5%	5%



TAGGED AND RECAPTURED

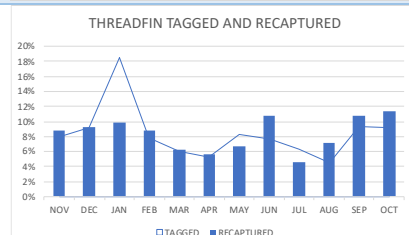
Threadfin
Tagged
Recaptured
FRR, PAR, CIS
Nov 2015-Oct 2025

	High	Low	Now
Fish tagged			
2016	2022	2025	
453	25	155	
Recaptured			
2016	2024	2025	
46	1	18	



Month
Tagged (1504)
Recaptured (194)
FRR, PAR, CIS
Nov 2015-Oct 2025

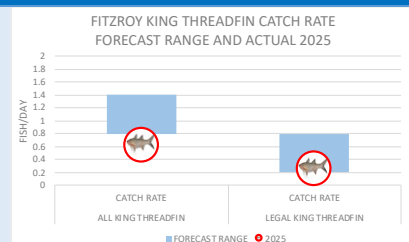
	Month	Month
Tagged	Jan (19%)	
Recaptured	Oct (11%)	
	Sep (11%)	
	Jun (11%)	



CATCH RATES T20 FISHERS

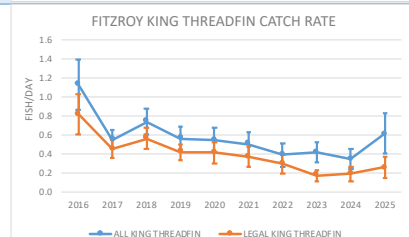
Forecast and actual catch rates (fish/day)
FRR, PAR, CIS
Nov 2024-Oct 2025

	Forecast	Actual
All	0.8-1.4	0.6
Legal	0.2-0.8	0.3



Catch rates
Crystal Bowl T20 fishers
Fish/day
FRR, PAR, CIS
Nov 2015-Oct 2025

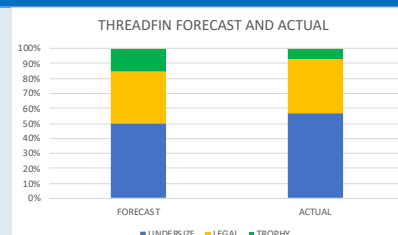
	High	Low	Now
All			
2016	2024	2025	
1.1	0.4	0.6	
Legal			
2016	2023	2025	
0.8	0.2	0.3	



LENGTHS

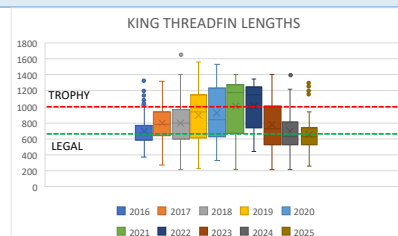
Fish lengths percentage
FRR, PAR, CIS
Undersize <650mm
Legal 650-1000mm
Trophy 1000+mm
Nov 2015-Oct 2025
Forecast and actual

	Forecast	Actual
Undersize	50%	57%
Legal-trophy	35%	36%
Trophy	15%	7%



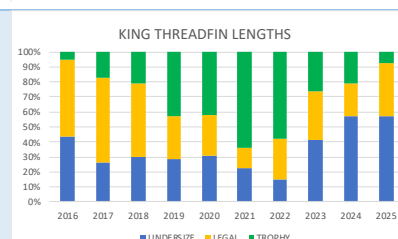
Threadfin lengths (mm)
Bars show length range
Dots show outliers
FRR, PAR, CIS
Nov 2015-Oct 2025

	High	Low	Now
Average length			
2022	2024	2025	
1010	700	655	
Max			
2018	2017	2025	
1660	1320	1300	

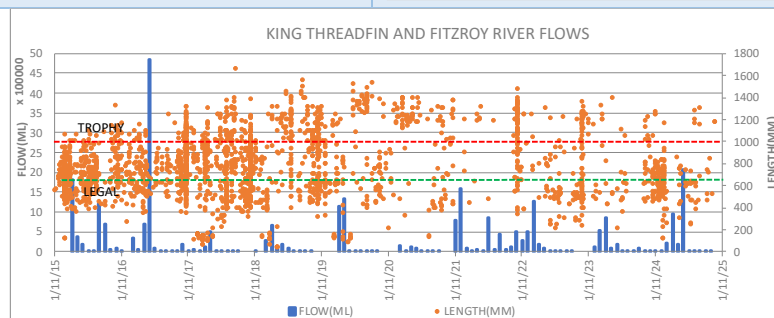


Fish lengths percentage
FRR, PAR, CIS
Undersize <650mm
Legal 650-1000mm
Trophy 1000+mm
Nov 2015-Oct 2025

	High	Low	Now
Legal-Trophy			
2017	2021	2025	
57%	13%	36%	
Trophy			
2021	2016	2025	
64%	5%	7%	



River flow and King Threadfin lengths
Floods
2017
2022 (multiple flows)
2025 (high flow)
Nov 2015-Oct 2025

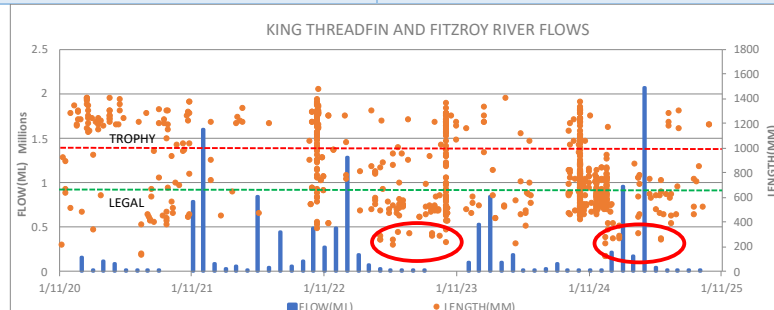


RECRUITMENT

Threadfin recruitment

Threadfin recruitment uncertain with possible moderate recruitment in 2022, 2023, 2024

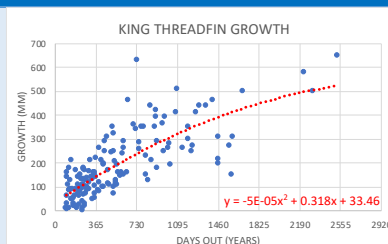
Threadfin recruits below legal line
Circle shows recruits in 2023 and 2024



GROWTH

Threadfin growth
Tagged 300-650mm
Growth/year (mm)
Recap (150)
Nov 2015-Oct 2025

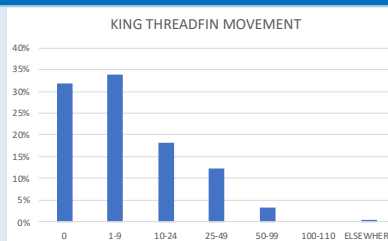
Growth/year (mm)	
Year 1	143
Year 2	239
Year 3	322
Year 4	391
Year 5	447



MOVEMENT

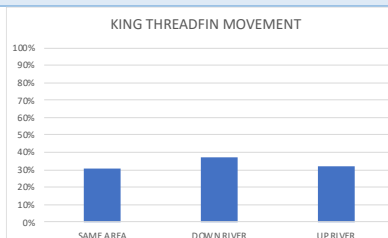
Threadfin movement (km)
In FRR, PAR, CIS (186)
Outside FRR, PAR, CIS (1)
Tagged
Nov 2015-Oct 2025

Moved (km)	Fish
0	59 (32%)
1-9	63 (34%)
10-24	34 (18%)
25-49	23 (12%)
50-99	6 (3%)
Elsewhere	1 (1%)



Threadfin movement (km)
Nov 2015-Oct 2025

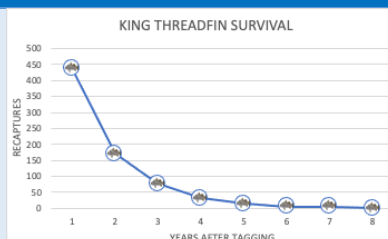
Moved	Fish
Same area	57 (31%)
Down river	68 (37%)
Up river	59 (32%)



SURVIVAL

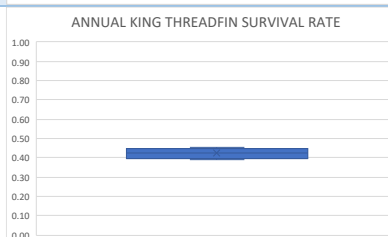
Threadfin survival
Recaptures years after tagging
All years

Recaptures	439
Max time out (years)	7.1



Threadfin survival
Annual survival rate
All years

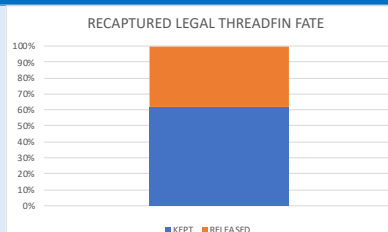
Annual survival rate	
Average	0.42 (42%)
Range	0.39-0.45



FATE

Recfishers (ex-taggers)
legal fish kept or released
FRR, PAR, CIS
Threadfin
Nov 2020-Oct 2025

Legal Threadfin	26
Kept	16 (62%)
Released	10 (38%)

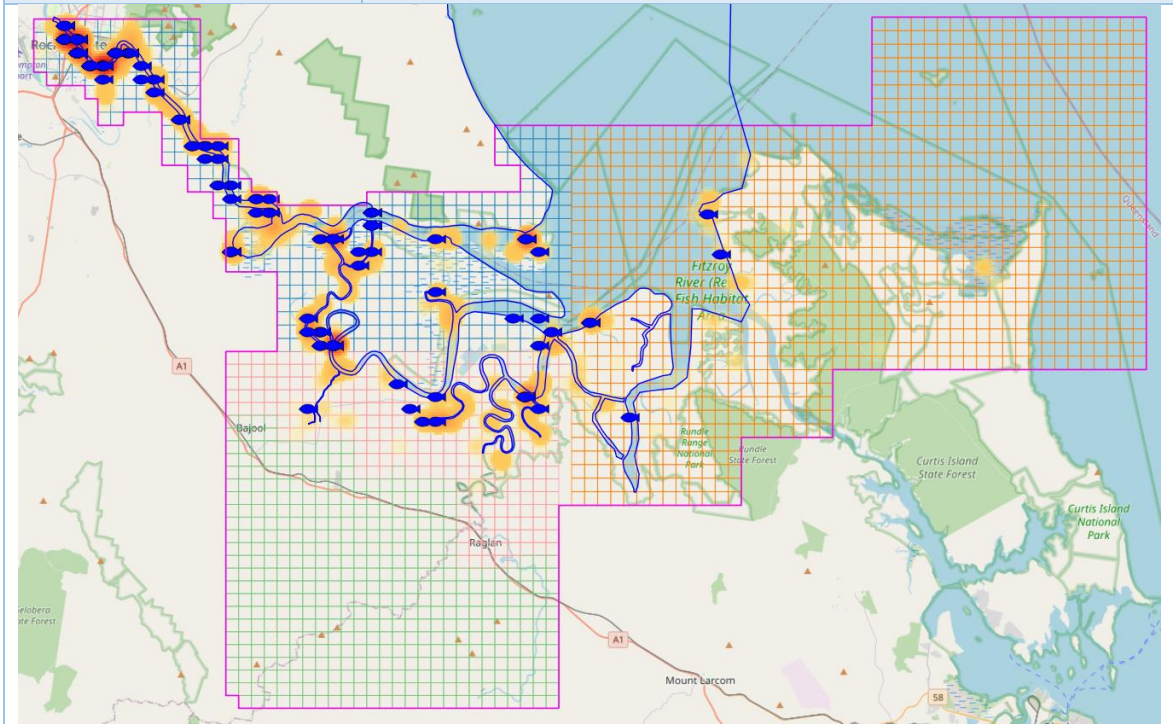


TAG LOCATIONS

Locations of Threadfin
tagged (red-orange heat
map)

Recaptured (blue fish)
Nov 2015-Oct 2025

Tagged 1877
Recaptured 193



BARRED JAVELIN



Year
Nov-Oct

DATA RELIABILITY

Sample size (av fish/year)
Tags (blue arrow)
Recaptures (orange arrow)
Confidence %
Error %
2021-2025

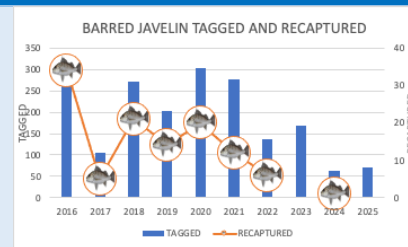
Reliability level	LOW	MODERATE	MODERATE	HIGH
Samples	10	41	68	271
Confidence	80%	80%	90%	95%
Error	20%	10%	10%	5%



TAGGED AND RECAPTURED

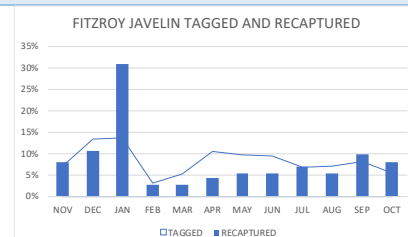
Javelin
Tagged (1903)
Recaptured (113)
Nov 2015-Oct 2025

High	Low	Now
Fish tagged		
2020	2024	2025
304	64	71
Recaptured		
2016	2023	2025
34	0	0



Month
Fish tagged (1903)
recaptured (113)
Nov 2015-Oct 2025

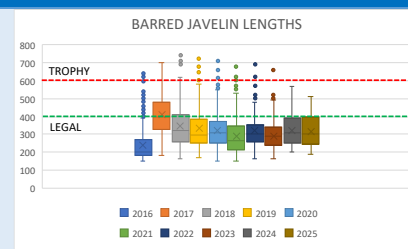
Tagged	Month
	Jan (14%)
	Dec (12%)
Recaptured	Jan (30%)
	Dec (11%)



LENGTHS

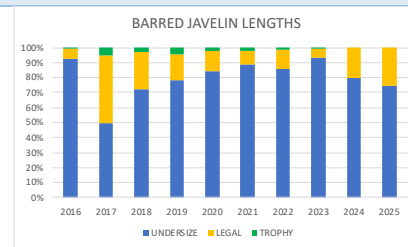
Lengths of fish (mm)
All fish
Bars show length range
Dots show outliers
Nov 2015-Oct 2025

High	Low	Now
Average length		
2017	2016	2024
407	240	316
Max length		
2018	2015	2024
740	640	570



Fish lengths percentage
Undersize <400mm
Legal 400-600mm
Trophy 600+mm
Nov 2015-Oct 2025

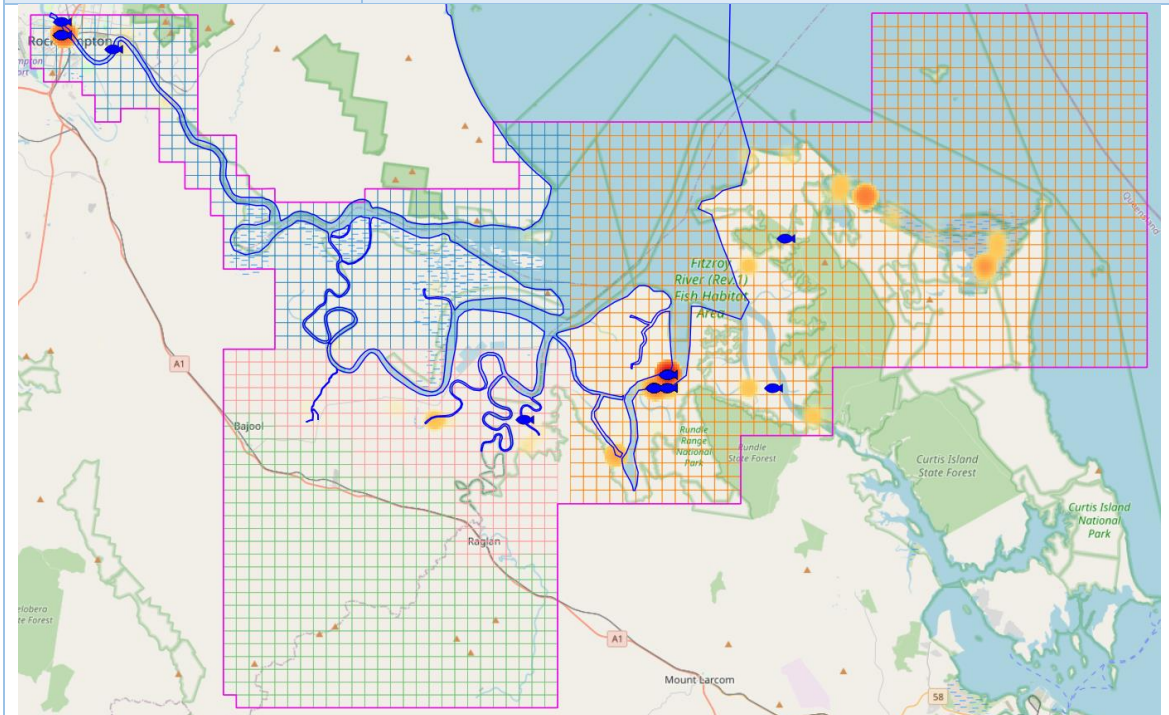
High	Low	Now
Legal-Trophy		
2017	2023	2024
45%	7%	18%
Trophy		
2015	2023	2024
6%	1%	0%



TAG LOCATIONS

Locations
Fish tagged (red-orange
heat map)
Recaptured (blue fish)
Nov 2015-Oct 2025

Tagged 1903
Recaptured 113



GOLDEN SNAPPER



Year
Nov-Oct

DATA RELIABILITY

Sample size (av fish/year)
Tags (blue arrow)
Recaptures (orange arrow)
Confidence %
Error %
2021-2025

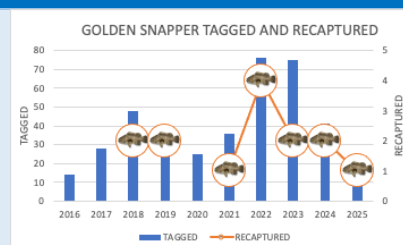
Reliability level	LOW	MODERATE	MODERATE	HIGH
Samples	10	41	68	271
Confidence	80%	80%	90%	95%
Error	20%	10%	5%	5%



TAGGED AND RECAPTURED

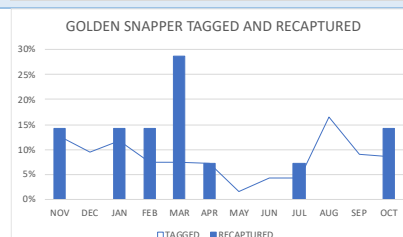
Golden Snapper
Tagged (401)
Recaptured (14)
Nov 2015-Oct 2025

High	Low	Now
Fish tagged		
2022	2016	2025
76	14	24
Recaptured		
2022	2020	2025
4	0	1



Month
Fish tagged (401)
recaptured (14)
Nov 2015-Oct 2025

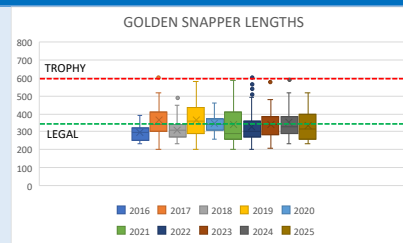
Tagged	Month
	Aug (16%)
	Jan (13%)
Recaptured	Mar (29%)



LENGTHS

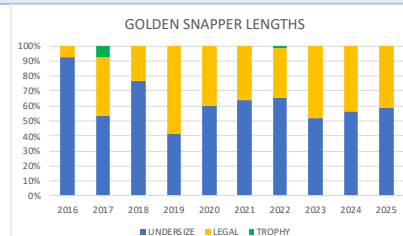
Lengths of fish (mm)
Tagged fish
Bars show length range
Dots show outliers
Nov 2015-Oct 2025

High	Low	Now
Average length		
2019	2016	2025
365	294	335
Max length		
2022	2016	2025
600	390	520



Fish lengths percentage
Undersize <350mm
Legal 350-600mm
Trophy 600+mm
Nov 2015-Oct 2025

High	Low	Now
Legal-Trophy		
2019	2016	2025
59%	7%	42%
Trophy		
2017	2024	2025
7%	0%	0%



TAG LOCATIONS

Locations

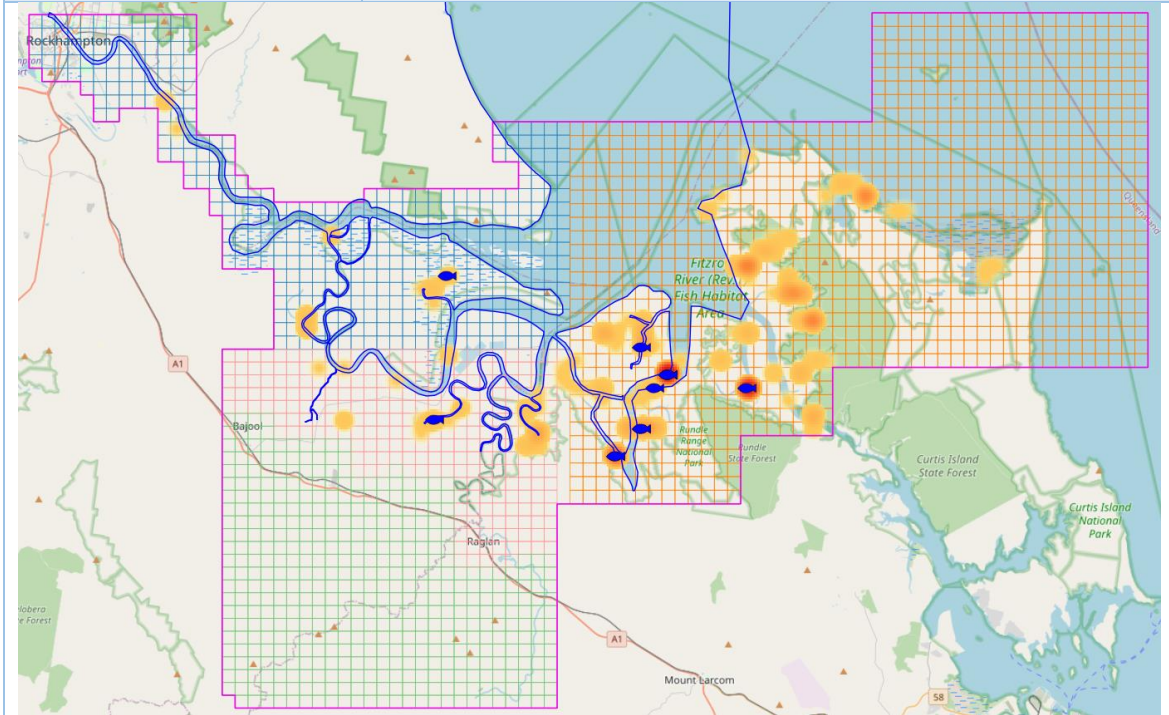
Fish tagged (red-orange
heat map)

Recaptured (blue fish)

Nov 2015-Oct 2025

Tagged 401

Recaptured 14



FITZROY BARRA BASH



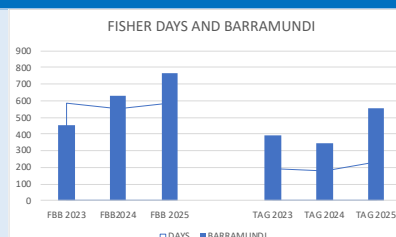
Fitzroy Barra Bash is a team's event held in the Capricornia Net Free Zone and the Narrows. It is a 2.5-day event primarily targeting Barramundi and King Threadfin however no location data are available so that it cannot be directly compared with Suntag data.

Catch rates and fish sizes are provided for FBB and Suntag however catch rates are not a like-for-like comparison as Suntag rates are for T20 fishers over the year while FBB rates are a snapshot for all competitors.

DAYS AND FISH

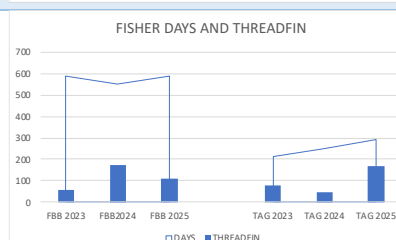
**Days fished and
Barramundi
FBB
Suntag T20
2023-2025**

	Days	Fish
FBB 2023	588	452
FBB 2024	552	631
FBB 2025	585	764
TAG 2023	192	394
TAG 2024	182	346
TAG 2025	227	548



**Days fished and Threadfin
FBB
Suntag T20
2023-2025**

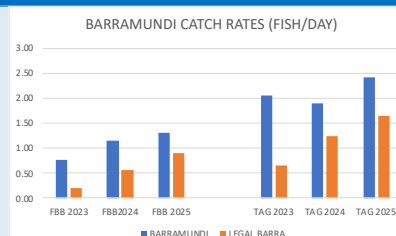
	Days	Fish
FBB 2023	588	60
FBB 2024	552	171
FBB 2025	585	111
TAG 2023	213	79
TAG 2024	248	45
TAG 2025	291	166



CATCH RATES

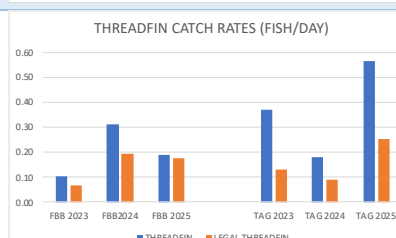
**Catch rates (fish/day)
Barramundi
FBB
Suntag T20
2023-2025**

	All	Legal
FBB 2023	0.77	0.21
FBB 2024	1.14	0.57
FBB 2025	1.31	0.89
TAG 2023	2.05	0.65
TAG 2024	1.90	1.25
TAG 2025	2.43	1.65



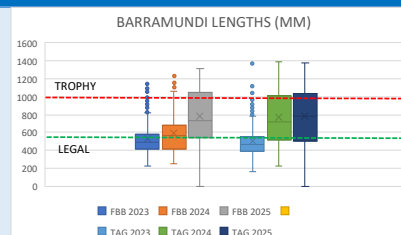
**Catch rates (fish/day)
Threadfin
FBB
Suntag T20
2023-2025**

	All	Legal
FBB 2023	0.10	0.07
FBB 2024	0.31	0.19
FBB 2025	0.19	0.18
TAG 2023	0.41	0.15
TAG 2024	0.25	0.12
TAG 2025	0.56	0.25



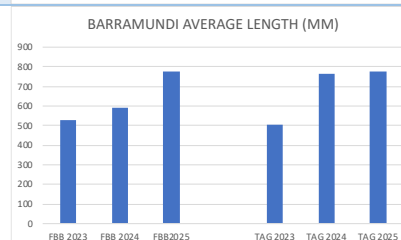
LENGTHS

Barramundi lengths (mm) 2023-2025



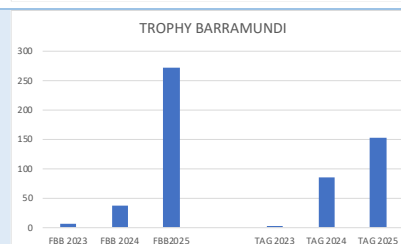
Barramundi average lengths (mm) 2023-2025

	Av	Max
FBB 2023	526	1140
FBB 2024	590	1260
FBB 2025	779	1310
TAG 2023	502	1370
TAG 2024	765	1385
TAG 2025	777	1380

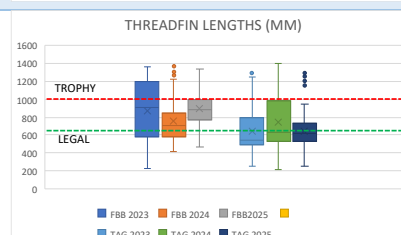


Trophy Barramundi 1000+ (mm) 2023-2025

	Trophy fish 1000+mm
FBB2023	26
FBB2024	30
FBB2025	25
TAG 2023	7
TAG 2024	15
TAG 2025	10

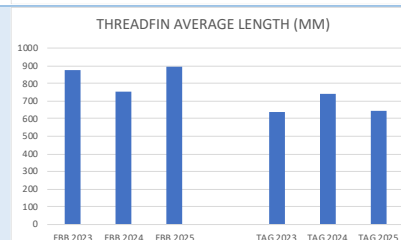


Threadfin lengths (mm) 2023-2025



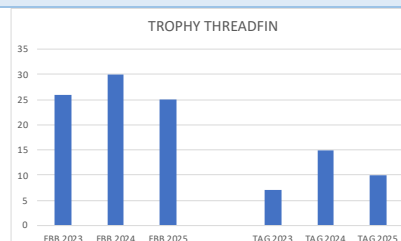
Threadfin average lengths (mm) 2023-2025

	Av	Max
FBB 2023	874	1360
FBB 2024	753	1370
FBB 2025	895	1340
TAG 2023	639	1300
TAG 2024	742	1400
TAG 2025	649	1300



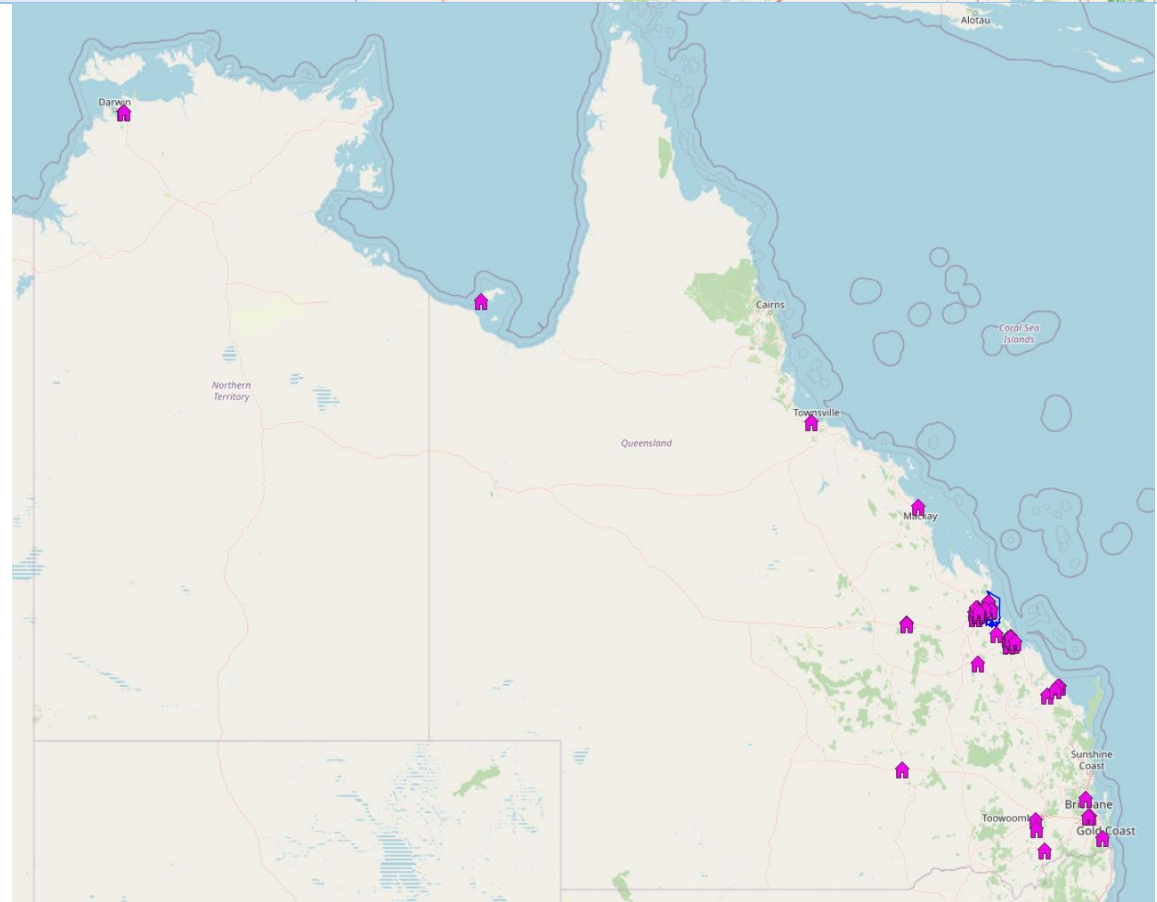
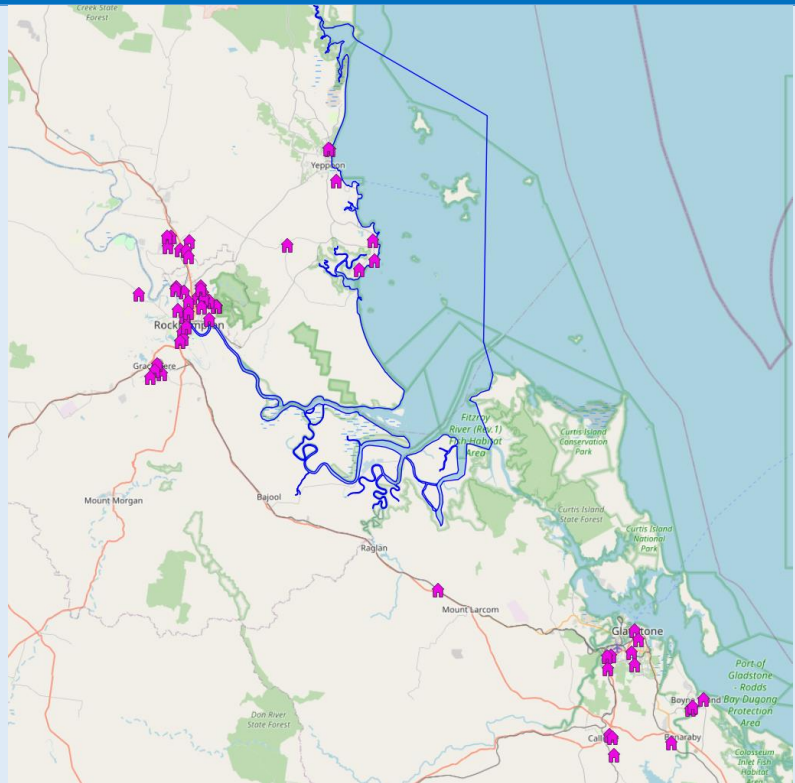
Trophy Threadfin 1000+ (mm) 2023-2025

	Trophy fish 1000+mm
FBB2023	26
FBB2024	30
FBB2025	25
TAG 2023	7
TAG 2024	15
TAG 2025	10



WHERE BARRA BASH COMPETITORS LIVE

Where Barra Bash competitors live
2025



Data sources

Data used in the Fitzroy Crystal Bowl are:

- Tag, recapture and catch records from Infish Suntag database from http://crystalbowl.infishaustralia.com.au/infish/f_infish.htm.
- River flow from monitoring station 130005A on the Fitzroy River at the Gap from <https://water-monitoring.information.qld.gov.au/>.
- Rainfall from monitoring station 039002 at Bajool from <http://www.bom.gov.au/jsp/ncc/cdio/weatherData>.
- Rainfall forecast data from Bureau of Meteorology <http://www.bom.gov.au/climate/ahead/outlooks/#moreMaps>.
- Climate drivers data from Bureau of Meteorology <http://www.bom.gov.au/climate/model-summary/>.
- Fitzroy Barra Bash records from Frenchville Sports Club. Competition details at <https://www.fitzroyriverbarrabash.com.au/>.

Data analysis

- Data reliability for fishers based on the sample size of days fished by taggers.
- Years are from Nov-Oct (eg Nov 2023-Oct 2024) so that data from the Barramundi closed season is in a single quarter to make fishing effort compatible.
- The Barramundi closed season is from 1 Nov-31 Jan.
- Tag rates are calculated as the number of fish caught per day.
- Distance from where fishers live and where they went fishing is based on straight line distance between the map grid centroid or estimated GPS where the fish was recaptured and their residential address, or town or suburb or centroid of their postcode, whichever is provided and calculated using Google Earth.
- For recapture fishers locations Local <70km, Intrastate postcodes starting with 4, Interstate postcodes other than those starting with 4.