

BOWLING GREEN BAY ESTUARIES REVIEW 2025

INFORMATION RATING



Key species: Barramundi, Barred Javelin, Mangrove Jack

Fish timeframe: 2016-2025

Fisher timeframe: 2021-2025

The data are below the preferred reliability level however still provides useful data from the area.

Scroll through the dashboard to cover all subjects of for information on a specific subject go to:

[BOWLING GREEN BAY ESTUARIES OVERVIEW](#)

[BOWLING GREEN BAY LOCATION](#)

[ENVIRONMENTAL CONDITIONS](#)

[TYPE OF FISHERY](#)

[FISHER ACTIVITY](#)

[FISHER EFFORT](#)

[FISHER TRAVEL](#)

[WHERE RECAPTURE FISHERS LIVE](#)

[STOCKED FISH](#)

[KEY SPECIES](#)

[BARRAMUNDI](#)

[BARRED JAVELIN](#)

[MANGROVE JACK](#)

BOWLING GREEN BAY ESTUARIES OVERVIEW

Summary of 2025

- Bowling Green Bay tagging continued at a low level this year so the information needs to be treated with caution.
- Stocking has been used to supplement the Barramundi population in the Haughton River and has previously been undertaken in the freshwater lagoons.

Bowling Green Bay estuaries include the Haughton River, Barratta Creeks, Morrissey Creek, Sheep Station Creek and other small creeks. The waterways are heavily modified, particular in the freshwater reaches which are mostly a series of lagoons.

Bowling Green Bay estuaries are mostly fished by local fishers who account for 77% of recaptures while visiting fishers are mainly from southern parts of the state. Most of the local fishers live in Townsville to the west and the Ayr-Home Hill area to the east.

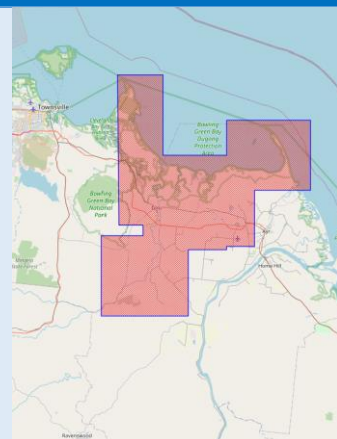
Fishing occurs throughout the year with a slight peak at the start and end of the Barramundi season from Feb-Oct. It mostly occurs on weekends with 56% of tagger days and 41% of recapture fishers days on weekends.

Like many locations on the east coast Barramundi are a key target species accounting for 65% of fish tagged. Other key species tagged are Barred Javelin and Mangrove Jack which account for a further 12% and 4% of fish tagged respectively. These species account for 81% of the fish tagged.

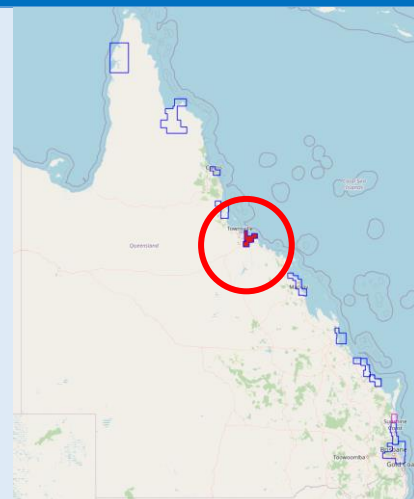
The area is primarily a harvest fishery with low levels of legal fish tagged and 74% of legal Barramundi caught during the open season by recfishers (other than taggers) being kept. Data are not available for other species however it is likely that a high proportion of legal fish are kept.

The Cungulla Fishing Club stocked tagged Barramundi into Giru Weir from 2013-2017. The recapture rate for these fish so far is 1.1% compared with 6.3% for wild fish which suggests the survival rate for stocked fish is less than that for wild fish.

BOWLING GREEN BAY LOCATION



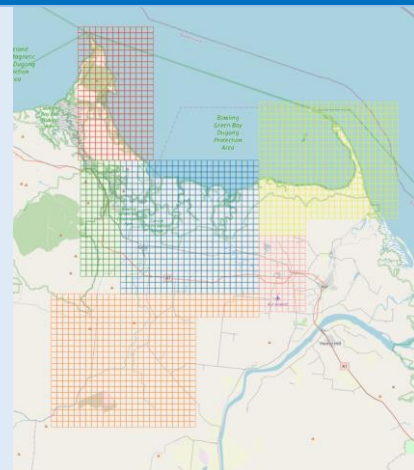
Giru
19.515°S
147.105°E



WATERWAYS

Bowling Green Bay maps
Bowling Green Bay BGB
Cape Cleveland MCT
Cromarty CRM
Cape Bowling Green BGC
Brandon BRN
Upper Houghton UHR

Haughton River
Barratta Creeks
Morrisey (Barramundi) Creek
Sheep Station Creek
Sheepwash Creek
Christmas Creek
Hughes Creek
Giffard Creek
Alva Creek

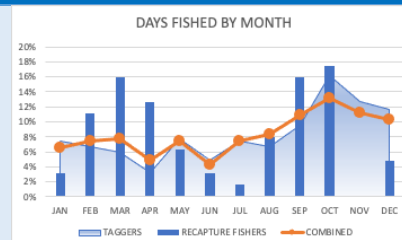


TYPE OF FISHERY																																						
DATA RELIABILITY																																						
Sample size (days fished)	<table><tr><td>Reliability level</td><td colspan="2">LOW</td><td colspan="2">MODERATE</td><td colspan="2">MODERATE</td><td colspan="2">HIGH</td></tr><tr><td>Samples</td><td>10</td><td>41</td><td>68</td><td>271</td><td>384</td><td>664</td><td></td><td></td></tr><tr><td>Confidence</td><td colspan="2">80%</td><td colspan="2">80%</td><td colspan="2">90%</td><td colspan="2">95%</td></tr><tr><td>Error</td><td colspan="2">20%</td><td colspan="2">10%</td><td colspan="2">5%</td><td colspan="2">5%</td></tr></table>		Reliability level	LOW		MODERATE		MODERATE		HIGH		Samples	10	41	68	271	384	664			Confidence	80%		80%		90%		95%		Error	20%		10%		5%		5%	
Reliability level	LOW		MODERATE		MODERATE		HIGH																															
Samples	10	41	68	271	384	664																																
Confidence	80%		80%		90%		95%																															
Error	20%		10%		5%		5%																															
Tag days (blue arrow)																																						
Recaptures (orange arrow)																																						
Confidence %																																						
Error %																																						
2021-2025																																						
Seasonality	Best Barramundi fishing																																					
Average rainfall (mm)	Feb-May																																					
Mean maximum day temperature (°C)	Sep-Oct																																					
Seasonality	Most fish tagged																																					
Fish tagged	Oct (16%)																																					
2021-2025	Nov (13%)																																					
	Dec (12%)																																					
Harvest or experiential fishery	Legal Barramundi kept rate																																					
Fate of recaptured legal Barramundi	Legal fish 39																																					
2021-2025	Kept 28 (72%)																																					
	Released 11 (28%)																																					
Local or visitor fishery	Recapture fishers 61																																					
Where recapture fishers live	Local 51 (84%)																																					
2021-2025	Visitor 10 (16%)																																					
Gender of recapture fishers (ex-taggers)	Recapture fishers 58																																					
2021-2025	Male 49 (84%)																																					
	Female 9 (16%)																																					

FISHER ACTIVITY

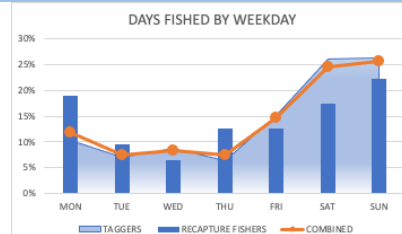
Monthly activity
Days fished combined
Taggers (284)
Recapture fishers (63)
2021-2025

	Month	%
Most days	Oct	13%
	Nov	11%
	Sep	11%



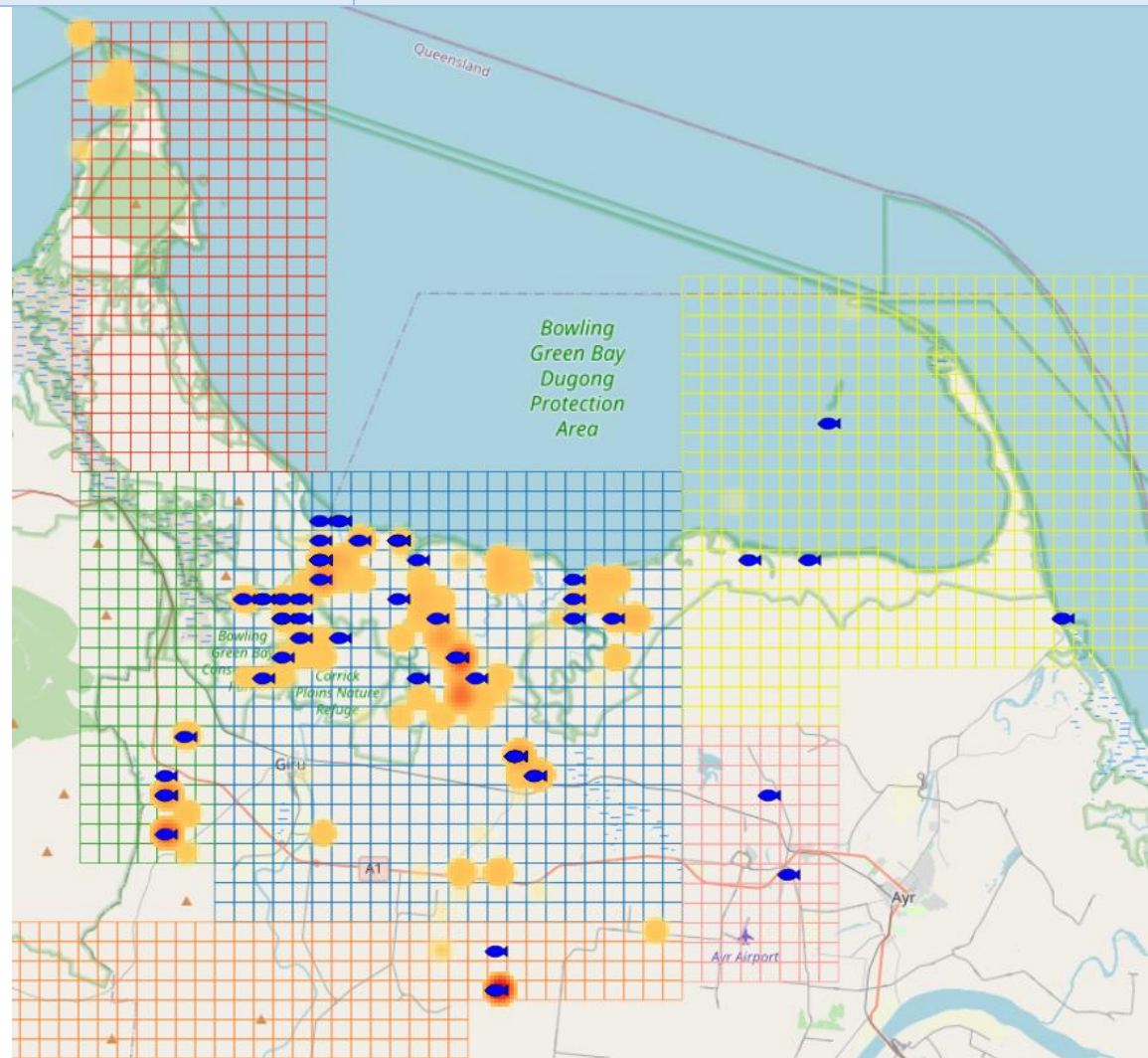
Weekday activity
Days fished
Taggers (284)
Recapture fishers (63)
2021-2025

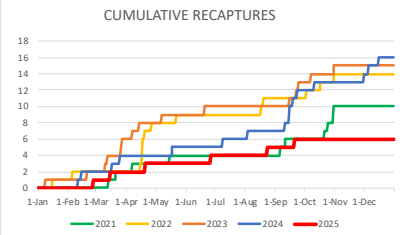
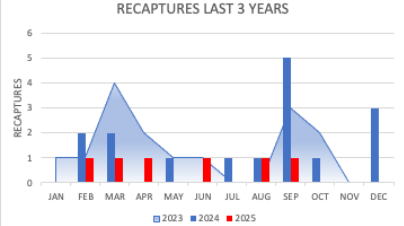
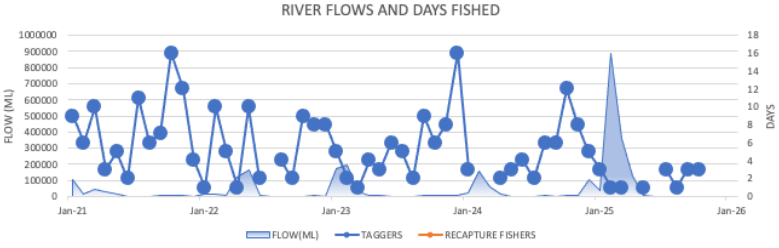
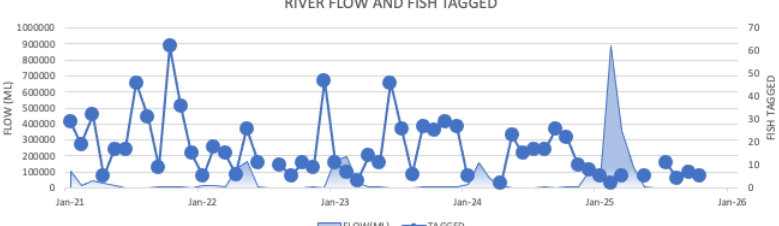
	Day	%
Most	Weekend	50%
	Weekdays	50%



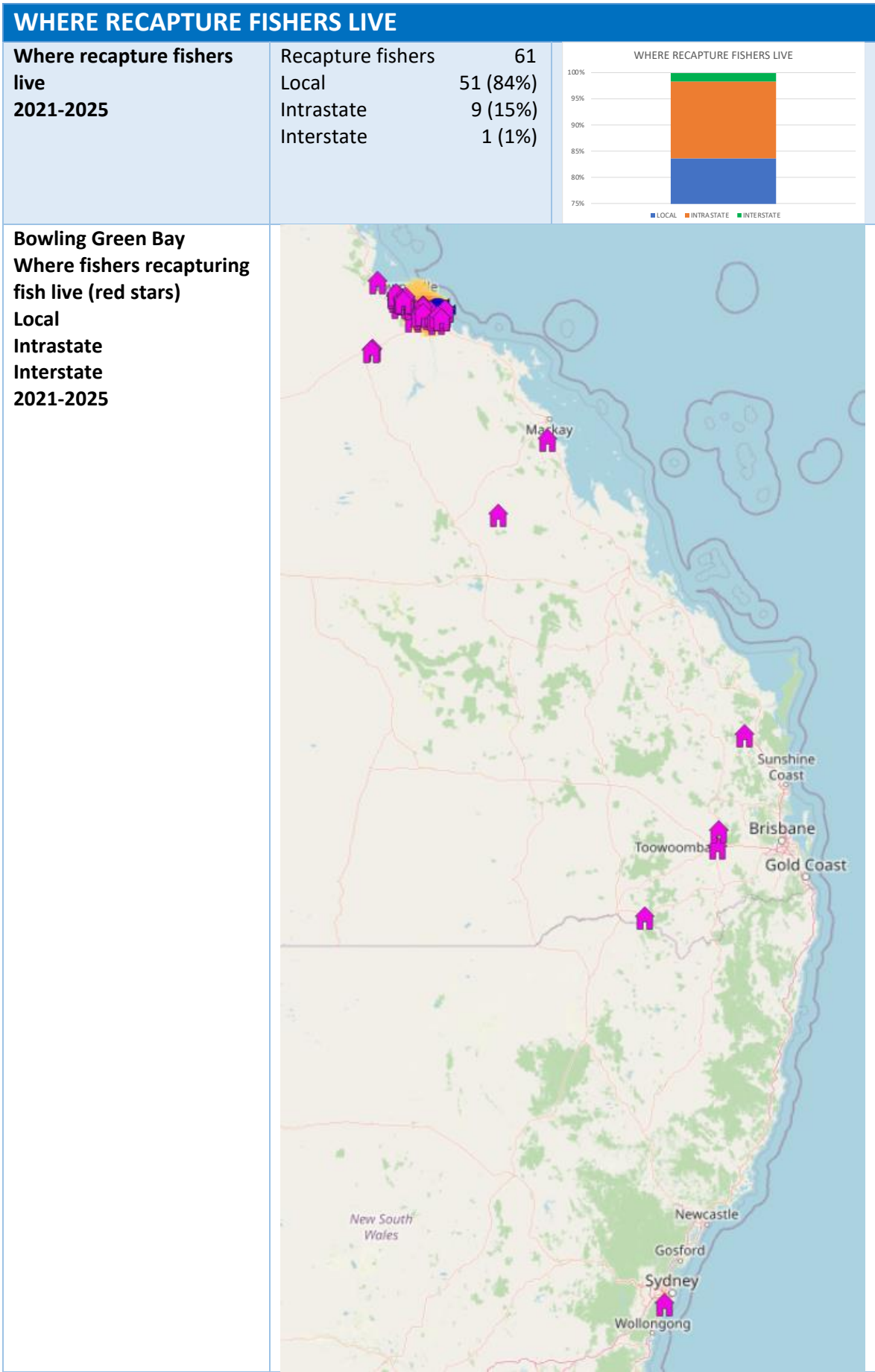
Location activity
Taggers
(red-orange heat map)
Recapture fishers
(blue fish)
2021-2025

Tagged	902
Recaptured	61

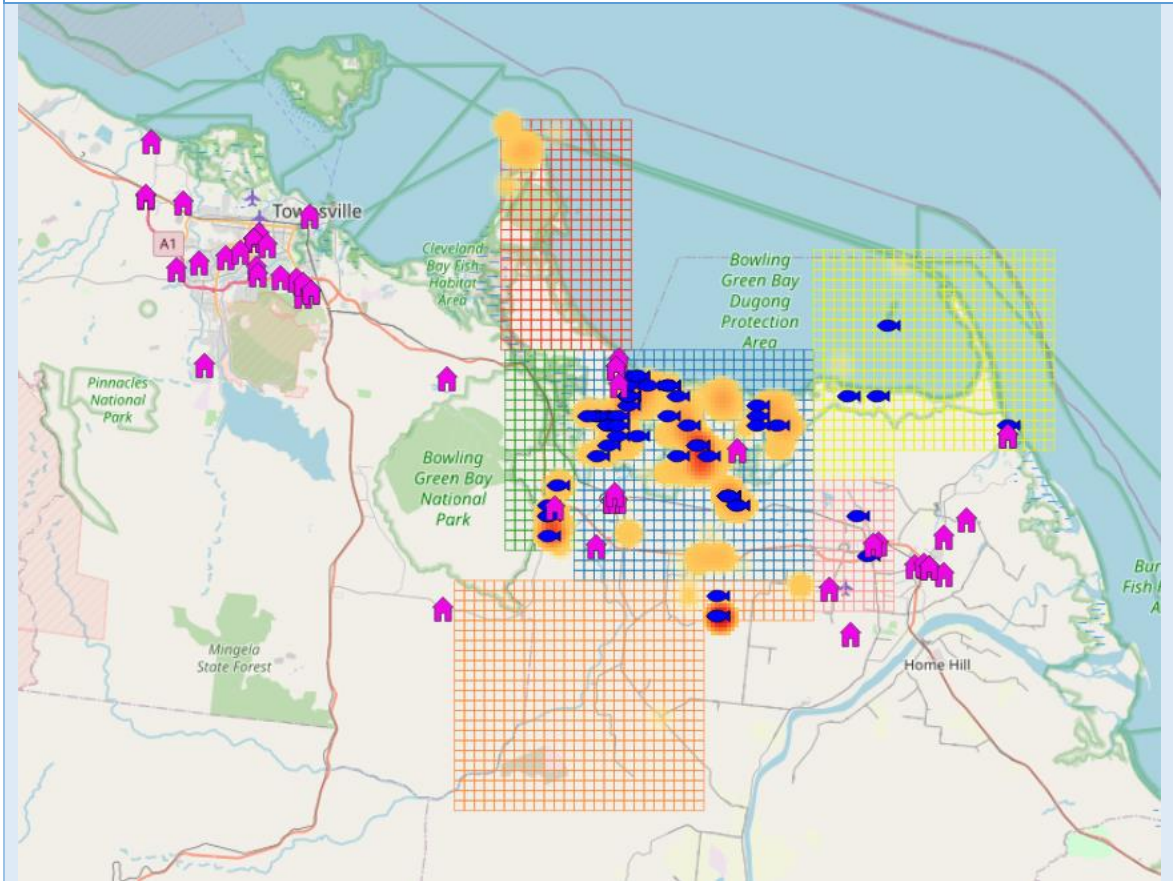


FISHER EFFORT			
Cumulative recaptures 2021-2025	Year	Recaps	
	2021	10	
	2022	14	
	2023	15	
	2024	16	
	2025	6	
Recaptures last 3 years 2023-2025			
Haughton River flow Taggers Days fished by month 2021-2025			
Haughton River flow Fish tagged by month 2021-2025			

FISHER TRAVEL			
Cumulative distance (km) home to recapture location 2021-2025			<p>CUMULATIVE PROXY TRAVEL DISTANCE (KM)</p>
Total distance (km) home to recapture location 2021-2025	Year 2021 2022 2023 2024 2025	Dist 587 3221 2425 1589 468	<p>TOTAL PROXY TRAVEL DISTANCE (KM)</p>
Average distance (km) from home to recapture location 2021-2025	Local Intrastate Interstate	Av distance (km) 31 558 1663	<p>RECAPTURE FISHER'S PROXY AVERAGE TRAVEL</p>
Distance (km) home to recapture location Bars show distance range Dots show outliers 2021-2025	Local Intrastate Interstate	Range (km) 1-78 110-1076 1663	<p>RECAPTURE FISHERS PROXY TRAVEL</p>



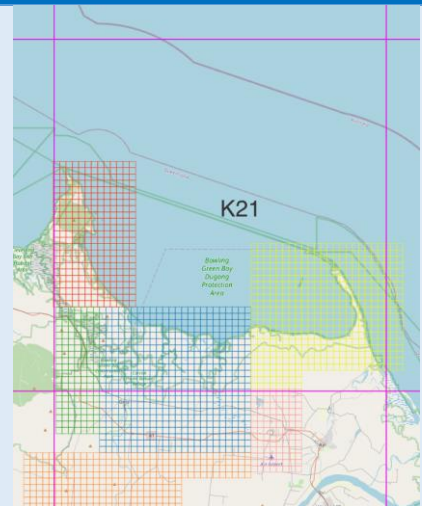
Bowling Green Bay
Where fishers recapturing
fish live
Local (pink houses)
2021-2025



COMMERCIAL CATCH

**Commercial QFISH
Grids**

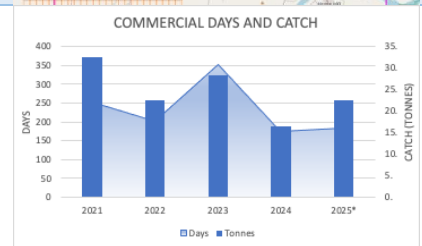
Grid
K21



**Commercial effort and
catch**
Net fishery (all)
Days
Catch (tonnes)
2021-2025

Year	Days	Catch
2021	252	32.51
2022	203	22.59
2023	352	28.4
2024	174	16.4
2025*	182	22.53

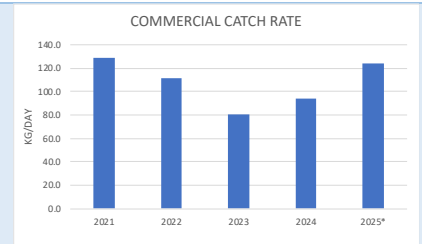
*incomplete


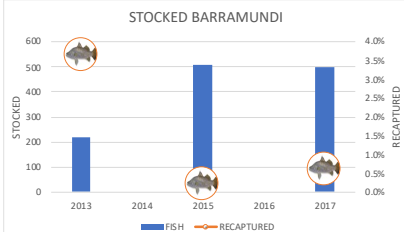
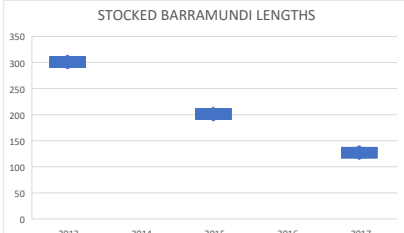
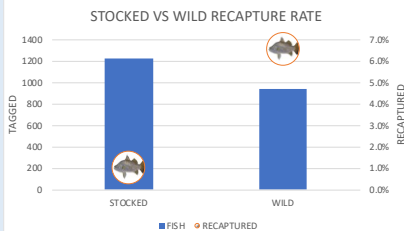
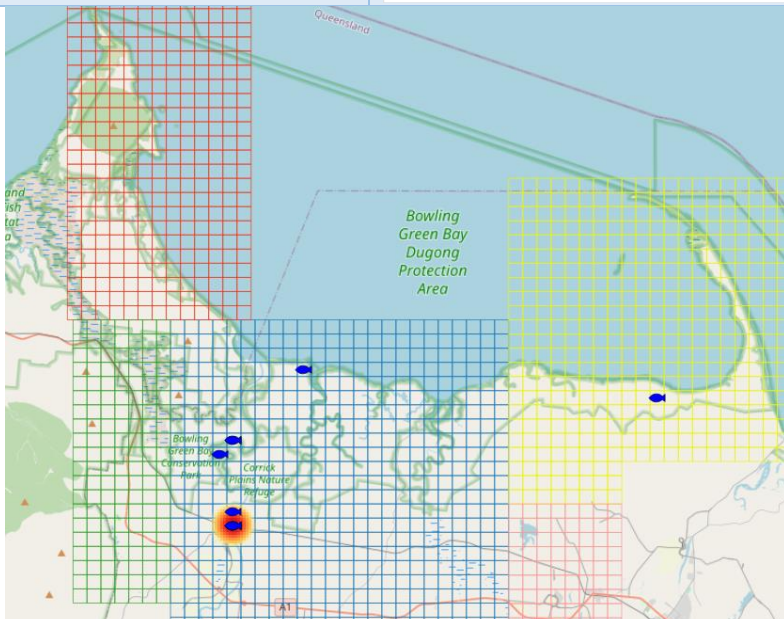





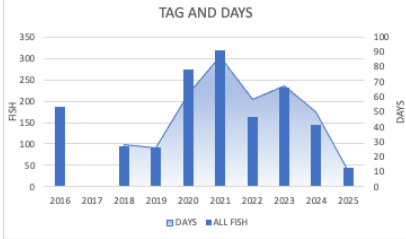
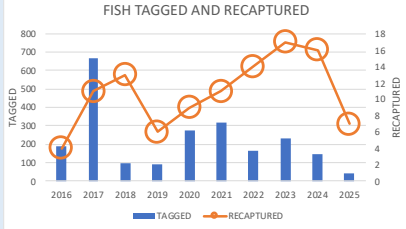
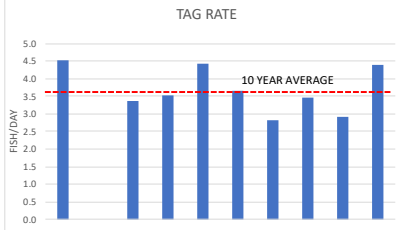
Commercial catch rate
Kg/day

Year	Kg/day
2021	129.0
2022	111.3
2023	80.7
2024	94.3
2025*	123.8

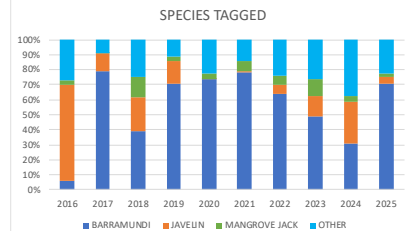
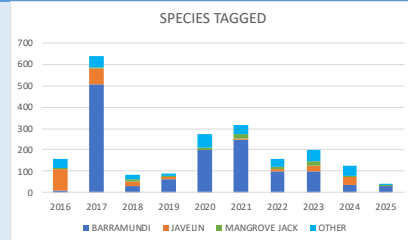
*Incomplete



STOCKED FISH																	
BARRAMUNDI																	
																	
Batch releases of tagged Barramundi 2013-2017	<table><thead><tr><th></th><th>Stocked</th><th>Recap</th></tr></thead><tbody><tr><td>2013</td><td>220</td><td>8 (3.6%)</td></tr><tr><td>2015</td><td>506</td><td>1 (0.2%)</td></tr><tr><td>2017</td><td>500</td><td>3 (0.6%)</td></tr><tr><td>Total</td><td>1226</td><td>12 (1.0%)</td></tr></tbody></table>		Stocked	Recap	2013	220	8 (3.6%)	2015	506	1 (0.2%)	2017	500	3 (0.6%)	Total	1226	12 (1.0%)	
	Stocked	Recap															
2013	220	8 (3.6%)															
2015	506	1 (0.2%)															
2017	500	3 (0.6%)															
Total	1226	12 (1.0%)															
Batch released Barramundi Estimated average length 2013-2017																	
Barramundi recapture rates Wild Stocked 2013-2025	<table><tbody><tr><td>Wild</td><td></td></tr><tr><td>Tagged</td><td>947</td></tr><tr><td>Recaptured</td><td>62 (6.5%)</td></tr><tr><td>Stocked</td><td>1226</td></tr><tr><td>Recaptured</td><td>12 (1.0%)</td></tr></tbody></table>	Wild		Tagged	947	Recaptured	62 (6.5%)	Stocked	1226	Recaptured	12 (1.0%)						
Wild																	
Tagged	947																
Recaptured	62 (6.5%)																
Stocked	1226																
Recaptured	12 (1.0%)																
Release location Giru weir (red-orange heatmap) Recaptured (blue fish) 2013-2017																	

KEY SPECIES				
BARRAMUNDI	BARRED JAVELIN		MANGROVE JACK	
				
TAGGED AND TAG RATE				
Tagging effort Days fished (429) Fish tagged (1548) (ex-stocked) 2016-2025	High	Low	Now	
	Fish tagged			
	2021	2019	2025	
	318	92	44	
	Days fished			
	2021	2019	2025	
	87	26	10	
Fish tagged (inc-stocked) Recaptured 2016-2025	Tagged		2217	
	Recaptured		108	
	Recapture rate		4.9%	
Tag rate Fish tagged/day 2016-2025	High	Low	Now	
	Tag rate			
	2016	2022	2025	
	4.5	2.8	4.4	
	10 year average		3.6	
				
				
				

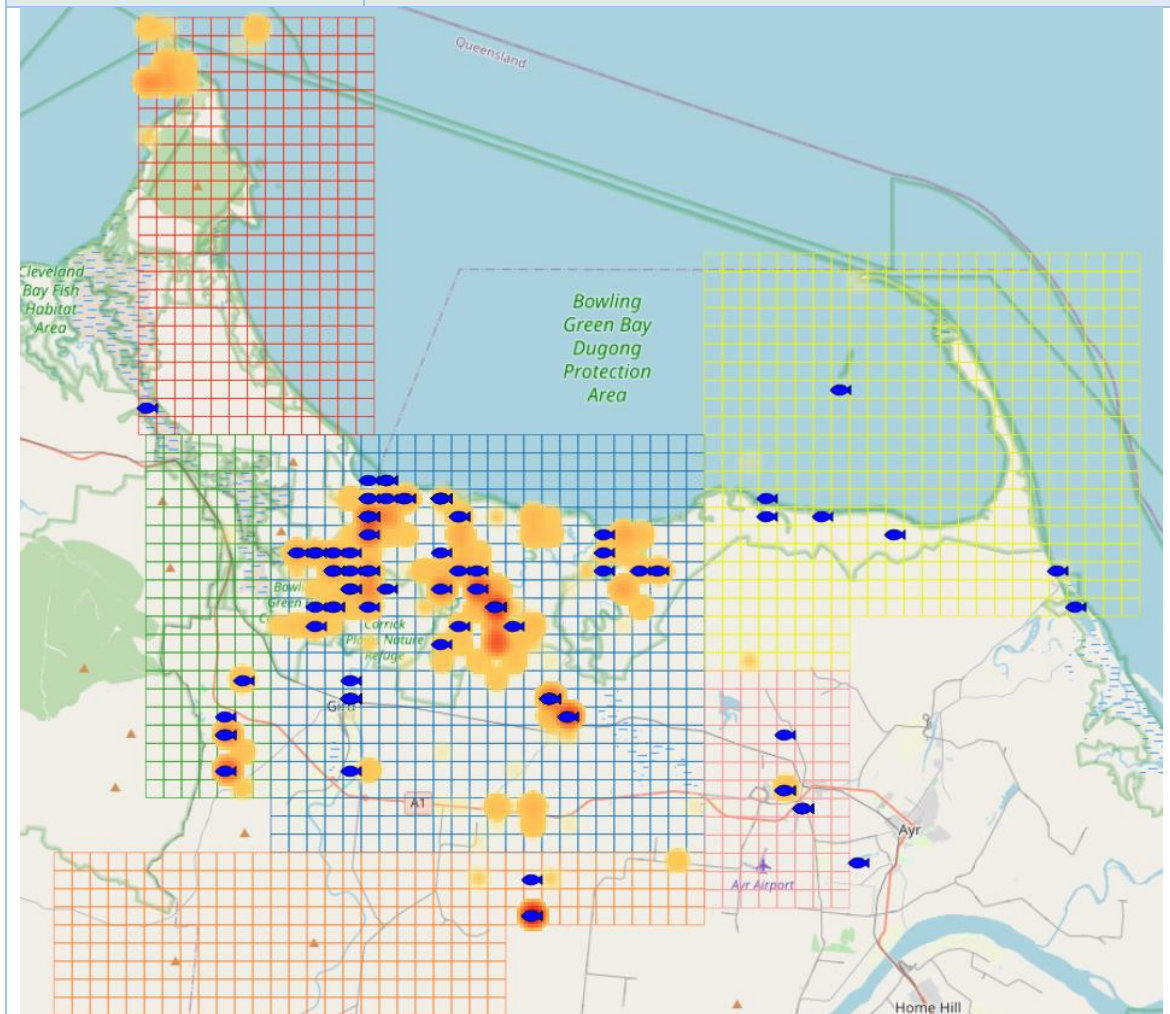
SPECIES		
Species tagged 2016-2025	Fish	Tagged
	All fish	2217
	Barramundi	1327
	Barred Javelin	288
	Mangrove Jack	88
	Other species	384
Percentage species tagged 2016-2025	Fish	Percent
	Barramundi	60%
	Barred Javelin	13%
	Mangrove Jack	4%
	Other	23%



LOCATIONS

All fish (ex-stocked)
Tagged (red-orange heat
map)
Recaptured (blue fish)
2016-2025

Tagged 1717
Recaptured 108



BARRAMUNDI



DATA RELIABILITY

Sample size (fish/year)
Tagged (blue arrow)
Recaptures (orange arrow)
Confidence %
Error %
2021-2025

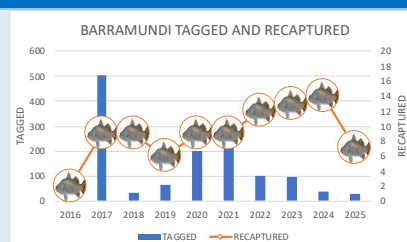
Reliability level	LOW		MODERATE		MODERATE		HIGH
Samples	10	41	68	271	384	664	
Confidence		80%	80%	90%	90%	95%	99%
Error		20%	10%	10%	5%	5%	5%



TAGGED AND TAG RATE

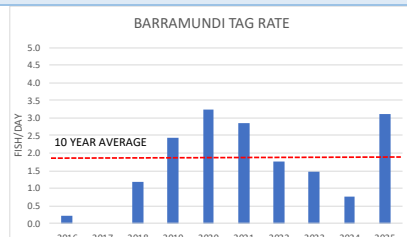
Barramundi tagged and recaptured
2016-2025

Tagged 1327
Recaptured 90
Recapture rate 6.8%
Tagged 2025 31



Tag rate
Barramundi
Fish/day
2016-2025

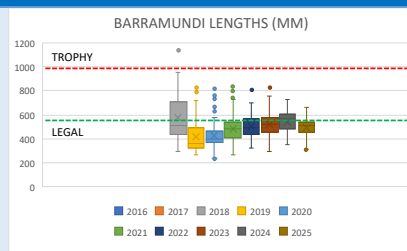
High Low Now
Tag rate
2020 2024 2025
3.2 0.8 3.1
10 year average 1.9



LENGTHS

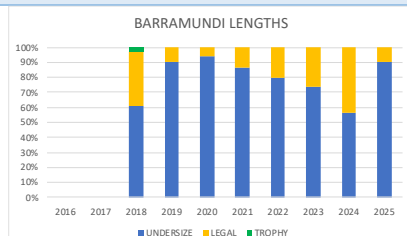
Average length (mm)
Bars show length range
Dots show outliers
2016-2025

High Low Now
Average length
2018 2019 2025
573 414 490
Largest
2018 2022 2025
1140 810 660



Fish lengths percentage
Undersize <580mm
Legal 580-1000mm
Trophy 1000+mm
2016-2025

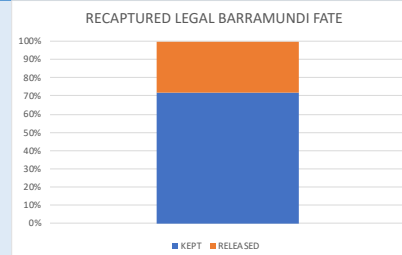
High Low Now
Legal
2018 2020 2025
36% 6% 10%
Trophy
2018 19-24 2025
3% 0% 0%



FATE

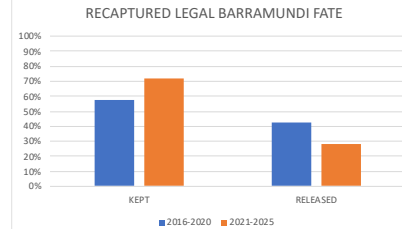
**Legal Barramundi
recaptures kept and
released by recfishers
Barra season only
(ex-taggers)
2016-2025**

Recaptures **39**
Kept **28 (72%)**
Released **11 (28%)**



**Legal Barramundi
recaptures kept and
released by recfishers
Barra season only
2016-2020
2021-2205**

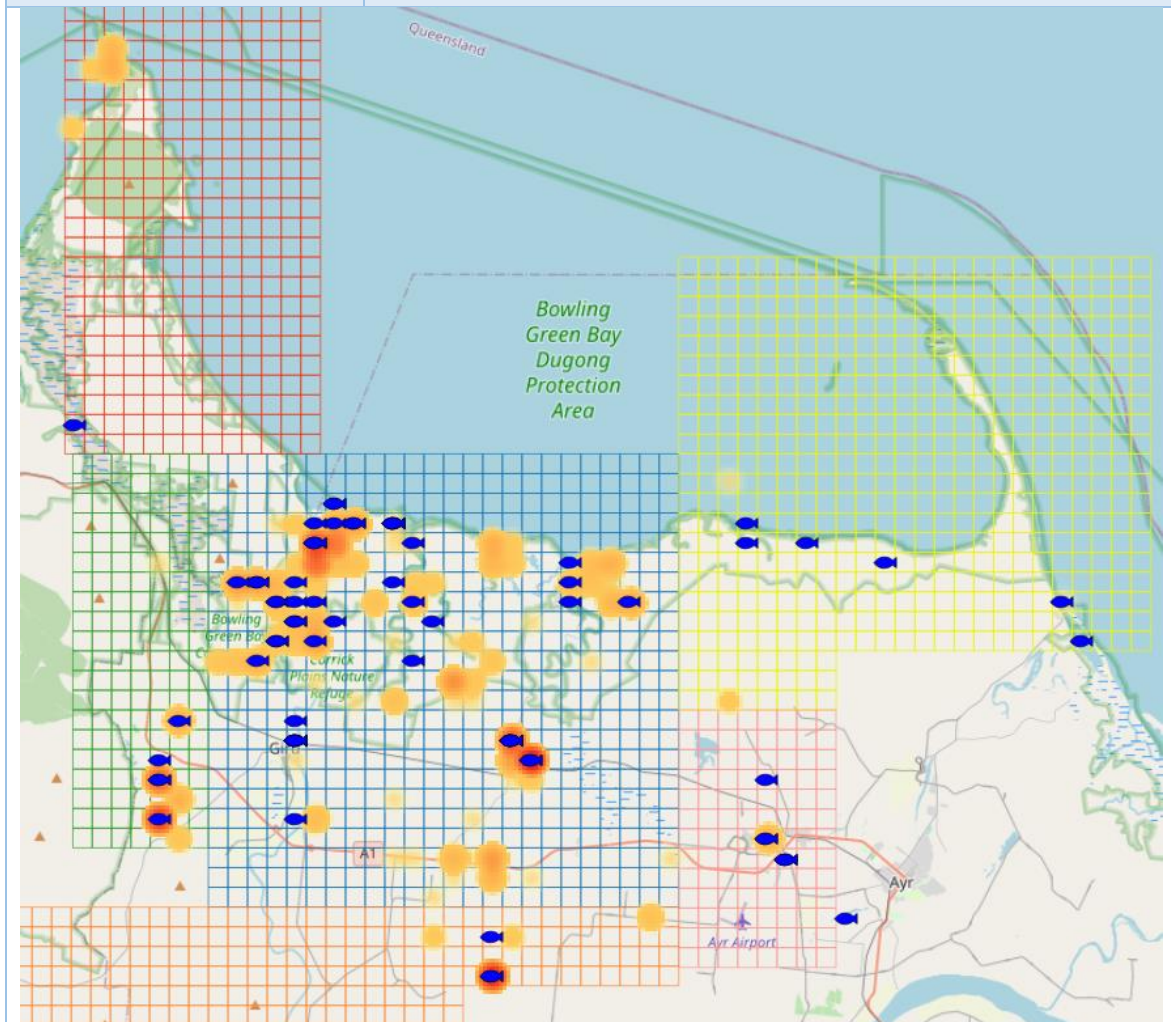
Kept
2016-2020 **15 (58%)**
2021-2025 **28 (72%)**

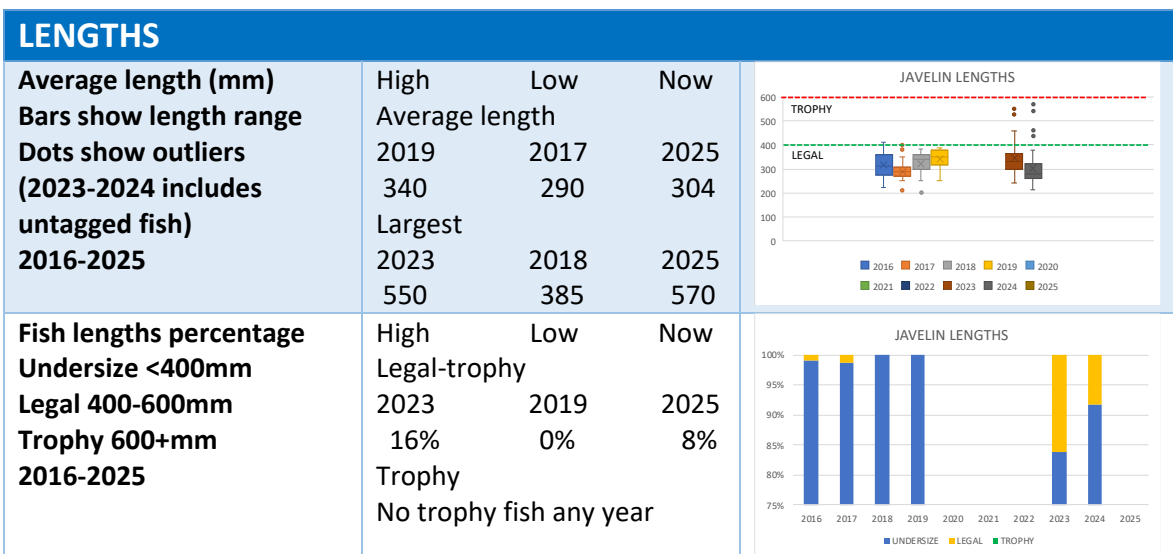
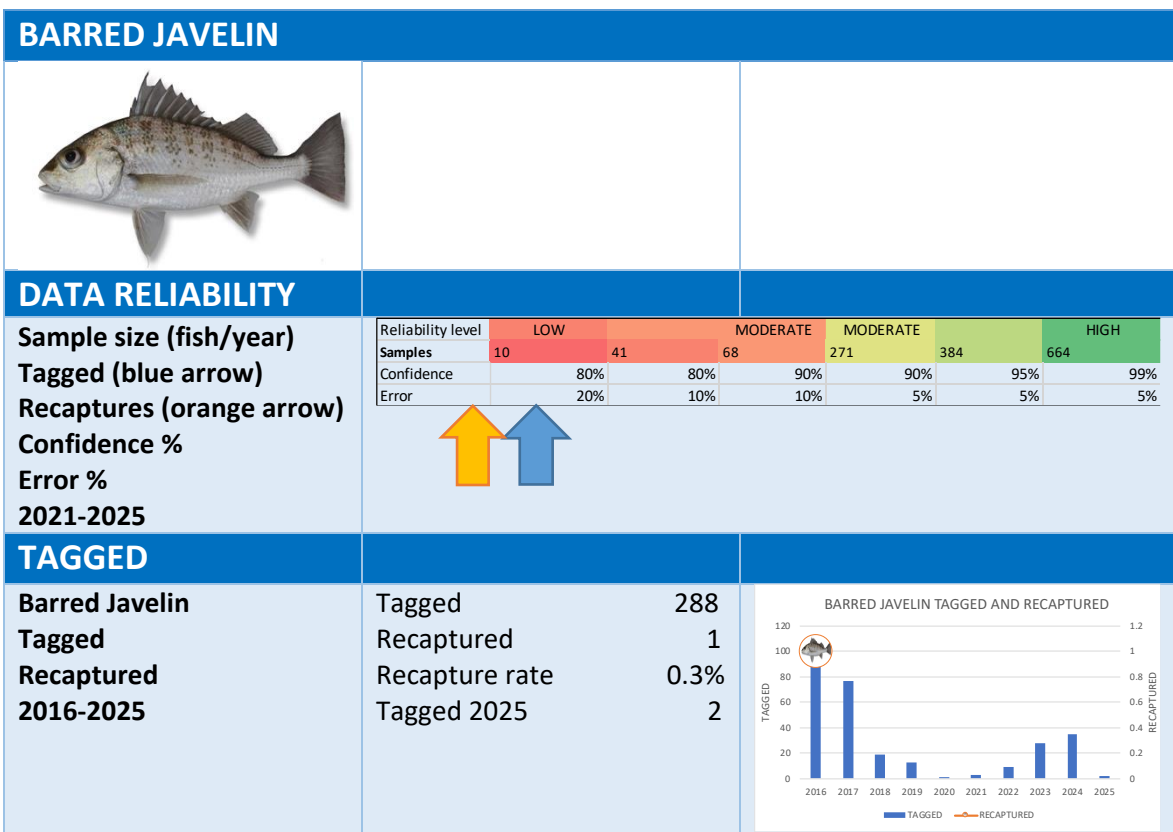


LOCATIONS

Barramundi (ex-stocked)
Tagged (red-orange heat map)
Recaptured (blue fish)
2016-2025

Tagged	827
Recaptured	88

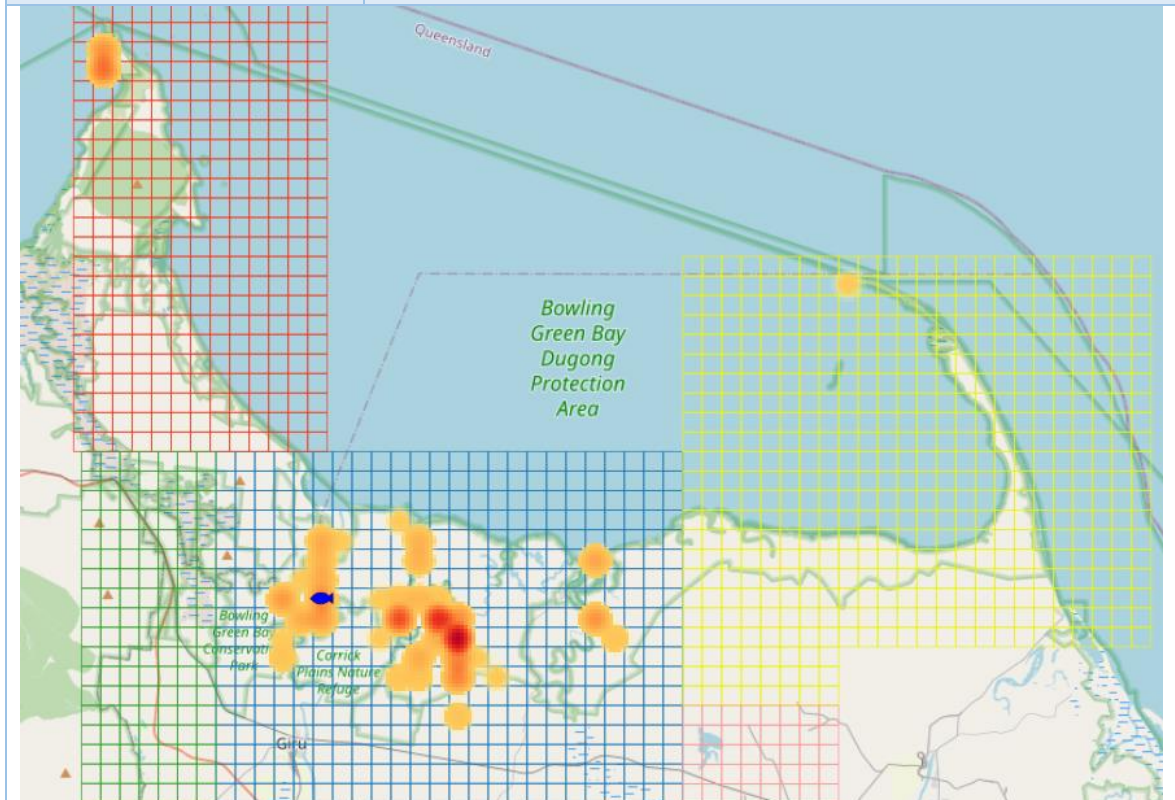




LOCATIONS

Barred Javelin
Tagged (red-orange heat map)
Recaptured (blue fish)
2016-2025

Tagged	288
Recaptured	1



MANGROVE JACK



DATA RELIABILITY

Sample size (fish/year)

Tagged (blue arrow)

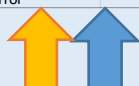
Recaptures (orange arrow)

Confidence %

Error %

2021-2025

Reliability level	LOW		MODERATE		MODERATE		HIGH
Samples	10	41	68	90	271	384	664
Confidence	80%	80%	80%	90%	90%	95%	99%
Error	20%	20%	10%	10%	5%	5%	5%



TAGGED

Mangrove Jack

Tagged

Recaptured

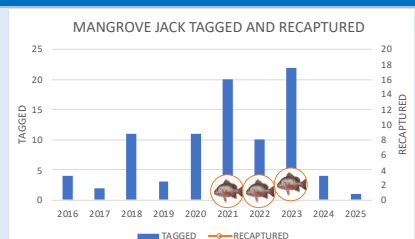
2016-2025

Tagged	88
--------	----

Recaptured	4
------------	---

Recapture rate	4.5%
----------------	------

Tagged 2025 1



LENGTHS

Average length (mm)

Bars show length range

Dots show outliers

2016-2025

High Low Now

Average length

2021 2015 2025

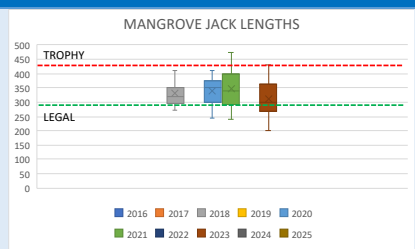
347	296	NA
-----	-----	----

Largest

2021 2015 2025

475	345	NA
-----	-----	----

High Low Now



Fish lengths percentage

Undersize <350mm

Legal 350-500mm

Trophy 500+mm

2016-2025

High Low Now

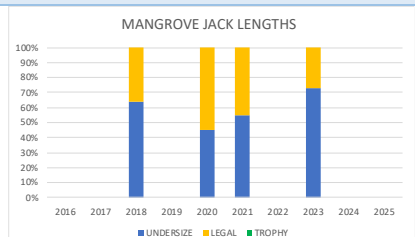
Legal-trophy

2020 2015 2025

55%	0%	NA
-----	----	----

Trophy

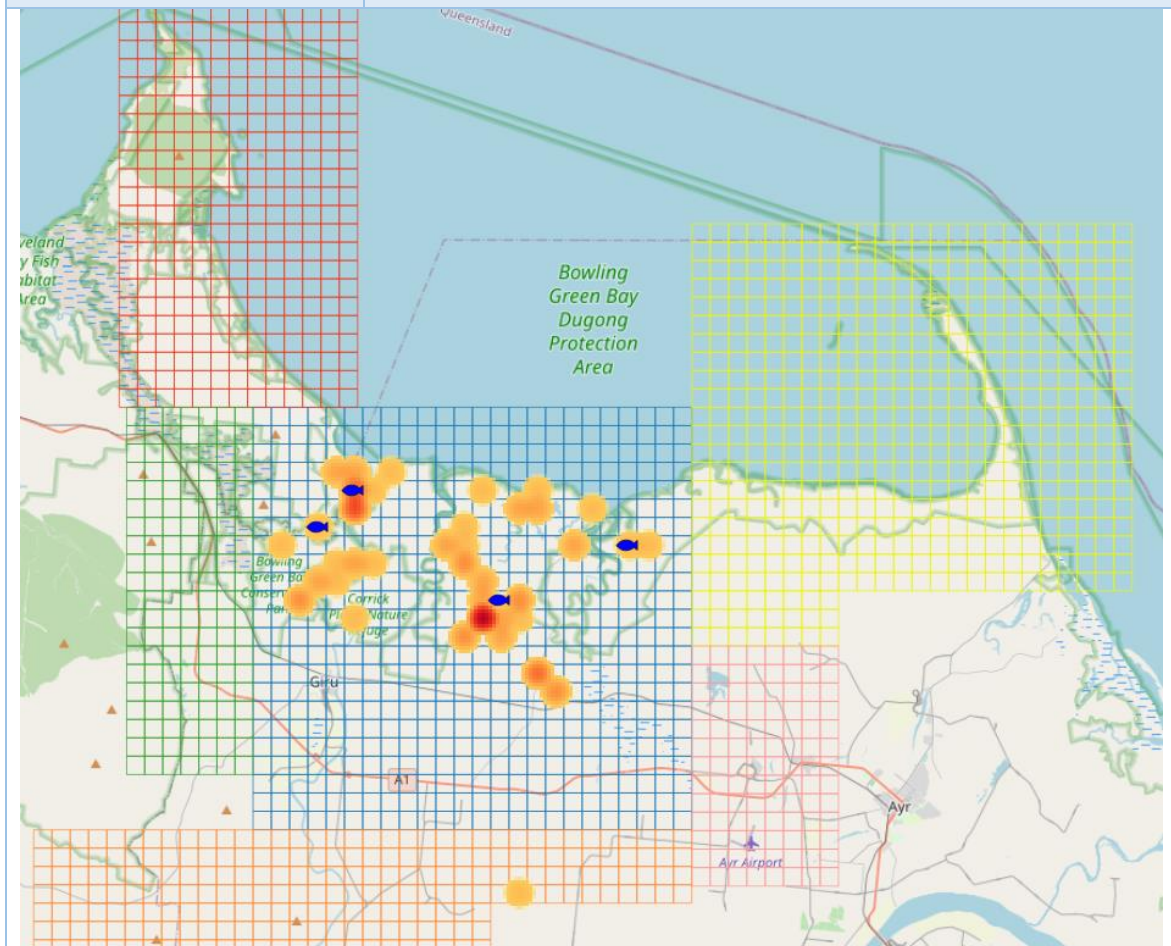
No trophy fish any year



LOCATIONS

Mangrove Jack
Tagged (red-orange heat map)
Recaptured (blue fish)
2016-2025

Tagged 88
 Recaptured 4



Data sources

Data used in the Bowling Green Bay Crystal Bowl are:

- Tag records and recapture records for the area at <http://crystalbowl.infofishaustralia.com.au/>.
- Haughton River flow data from station 119003A at Powerline from <https://water-monitoring.information.qld.gov.au/>.
- Rainfall data from Powerline TM Station 033280 and temperature data from Ayr DPI Research Station 033002 from <http://www.bom.gov.au/climate/data/>.

Basis for analysis

- Data reliability for fishers based on the sample size over the past 5 years for days fished by taggers and by fishers recapturing fish.
- Data reliability for fish based on average number of fish tagged and recaptured per year over the past 5 years.
- Catch rates calculated as number of fish tagged/days fished.
- Recapture rates relate to fish tagged in a particular year.
- Undersized Barramundi are <580mm, legal-trophy fish are ≥580 and <1000mm and trophy fish are ≥1000mm. Legal fish are 580-1200mm.
- Undersized Barred Javelin are <400mm, legal-trophy fish are ≥400 and <600mm and trophy fish are ≥600mm.
- Undersized Mangrove Jack are <350mm, legal-trophy fish are ≥350 and <5600mm and trophy fish are ≥500mm.
- Locations based on Infofish grid maps BGB, MCT, CRM, BGC, BRN, UHR and other grid maps where fish were recaptured outside the area.
- Travel proxy distance is the distance between where the fisher lives (address, suburb, town or postcode) and the recapture location. Local <80km, intrastate Qld elsewhere, interstate other than Qld.