



GLADSTONE HARBOUR REVIEW 2025

INFORMATION RATING



Key species: Barramundi, Mangrove Jack, Yellowfin Bream, Pikey Bream, Barred Javelin

Fish timeframe: 2016-2025

Fisher timeframe: 2021-2025

Scroll through the dashboard to cover all subjects or for information on a specific subject go to:

[GLADSTONE HARBOUR OVERVIEW](#)

[GLADSTONE HARBOUR LOCATION](#)

[ENVIRONMENTAL CONDITIONS](#)

[TYPE OF FISHERY](#)

[FISHER ACTIVITY](#)

[FISHER EFFORT](#)

[FISHER TRAVEL](#)

[WHERE RECAPTURE FISHERS LIVE](#)

[COMMERCIAL CATCH](#)

[KEY SPECIES](#)

[BARRAMUNDI](#)

[MANGROVE JACK](#)

[YELLOWFIN BREEM](#)

[PIKEY BREEM](#)

[BARRED JAVELIN](#)

[BOYNE TANNUM HOOK UP COMPETITION](#)



Product of Infofish Australia

Supported by Suntag, Gladstone Ports Corporation, and
Department of Primary Industries

GLADSTONE HARBOUR OVERVIEW

Summary of 2025

- There was a high level of tagging activity in the Gladstone area with a further 1823 fish tagged and 85 recaptures keeping the confidence level in the data high.
- The Boyne Tannum Hook Up (BTHU) competition held in May this year continued to provide additional useful data.

Gladstone Harbour is mostly a local fishery with 85% of recaptures reported by locals. Visiting fishers mostly come from Rockhampton, Central and SE Qld with low numbers from interstate, mostly from NSW and Victoria. Tagging and recaptures occur throughout the year with increased activity around May-Jun around the time of the BTHU competition. Fish tagged during the BTHU competition result in a boost in recaptured in May-Jun.

Around 39% of tagger fishing days were on the weekend while for those recapturing fish 48% were reported from the weekend.

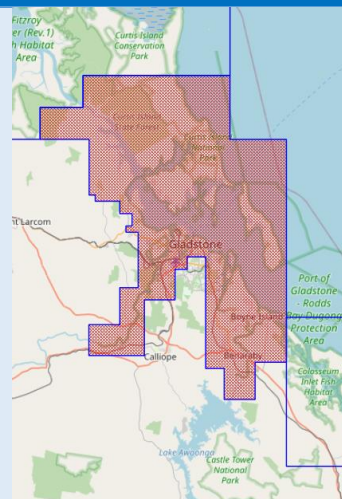
While Barramundi are a key species they are not as prolific as further north. Barramundi become a prime target when Lake Awoonga spills releasing fish from the lake. When that happens fishing for the species increases, particularly in the Boyne River. Following the spill in 2017 in the next 2 years fish tagged in the lake were recaptures in the Boyne River up to 10km below the dam with just 1 fish recaptured further away south along the coast. Since then, there have been few Barramundi tagged or recaptured in the Boyne River.

The lake has not spilled since 2017 and there has not been any significant natural recruitment so that Barramundi numbers have gradually fallen to low levels reflected in lower activity, a fall in the numbers tagged, a lower catch rate, and a fall in the commercial catch.

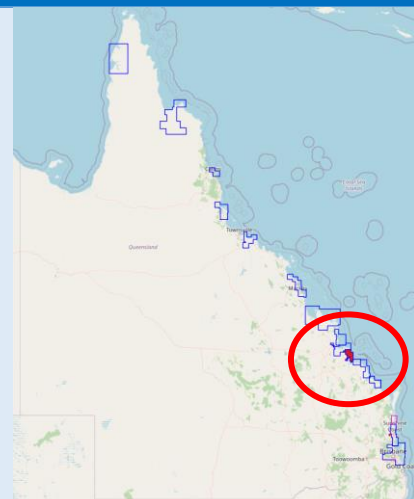
Mangrove Jack and Bream are other key species although in the last few years there has been an increase in the numbers of Barred Javelin (Grunter) tagged. Flathead are another species targeted by taggers but to a lesser extent.

Based on recaptures of legal fish by recreational fishers (other than taggers) the level of harvest of the key species is around 50% for Barramundi, Mangrove Jack and Bream however is higher at around 90% for Barred Javelin (however numbers are low). The area is a mix of a harvest and experiential fishery although there has been an increase in the release rate of legal fish. This is supported by the continuing increase of live fish (all legal) presented at the live weigh-in at the BTHU and boat ramp surveys during the competition up to 2019 which showed a steady decline in the kept fish catch rate.

GLADSTONE HARBOUR LOCATION



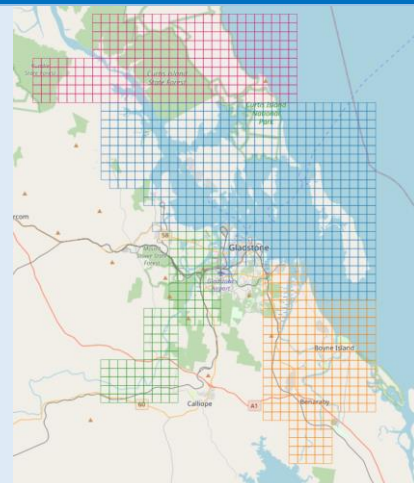
Gladstone Harbour
 Lat S 23.8
 Lon E 151.3



WATERWAYS

Gladstone Harbour and adjoining waterways
Grid maps
Curtis Gladstone CISG
Gladstone Harbour GLD
Calliope River CR02
Boyne River BRG

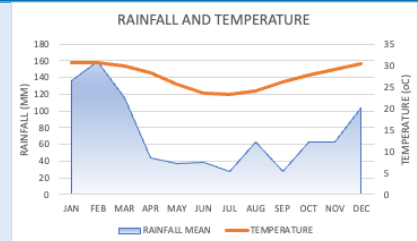
Narrows and creeks
 Curtis Island
 Gladstone Harbour
 Auckland Creek
 Calliope River
 South Trees Inlet
 Boyne River



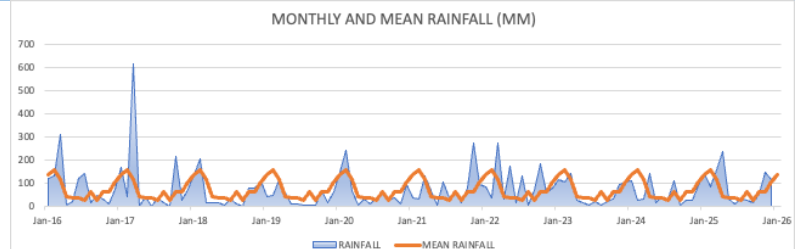
ENVIRONMENTAL CONDITIONS

Gladstone Airport monthly means
Rainfall (mm)
Day air temperature (oC)
All years

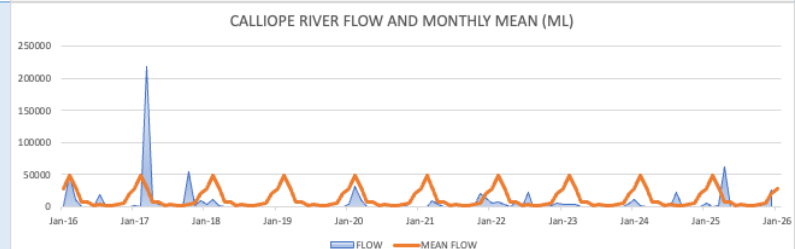
Rainfall	Month	mm
High	Feb	159
Low	Sep	27
Temp	Month	oC
High	Feb	31
Low	Jul	23



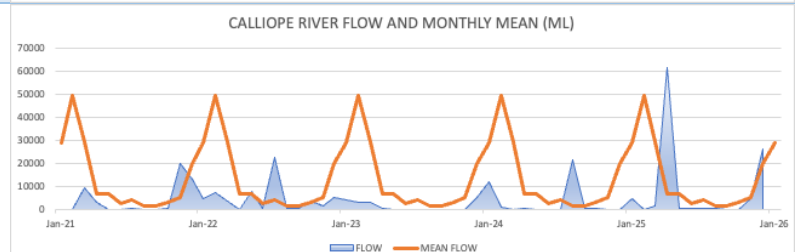
Gladstone Airport
Monthly rainfall (mm)
Monthly mean (mm)
2016-2025



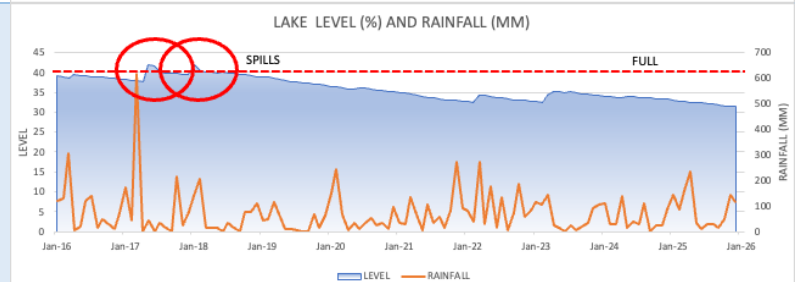
Calliope River
Monthly flow (ML)
Mean monthly flow (ML)
2016-2025



Calliope River
Monthly flow (ML)
Mean monthly flow (ML)
2021-2025



Lake Awoonga
Dam levels
2016-2025
Spills
2017 (Apr and Nov)

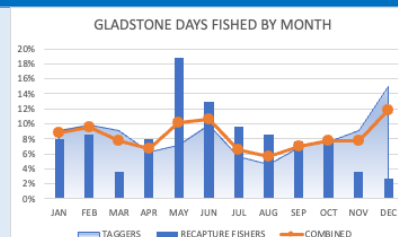


TYPE OF FISHERY		
DATA RELIABILITY		
Sample size (days fished) Tag days (blue arrow) Recaptures (orange arrow) Confidence % Error % 2021-2025	Reliability level	LOWMODERATEMODERATEHIGH
	Samples	104168271384664
	Confidence	80%80%90%90%95%99%
	Error	20%10%10%5%5%5%
Seasonality Mean monthly rainfall Days fished combined Taggers Recapture fishers 2021-2025	Months most fished	
	Combined	Dec
		Jun
		May
	May-Jun influenced by Boyne Tannum Hookup fishing competition tags	
Harvest or experiential fishery Release rate of recaptured legal fish of key species 2021-2025	Key species legal fish harvested	
	Legal fish	211
	Kept	92 (44%)
	Released	119 (56%)
Local or visitor fishery Where recapture fishers live 2021-2025	Recapture fishers	370
	Local	315 (85%)
	Visitor	55 (15%)
Gender of recapture fisher (ex-taggers) 2021-2025	Recaptures	301
	Female	33 (11%)
	Male	268 (89%)

FISHER ACTIVITY

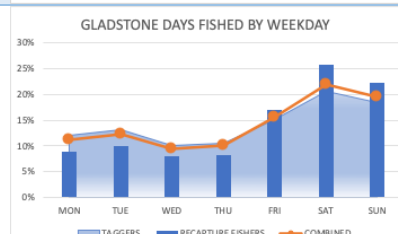
Monthly activity
Days fished
Taggers (1064)
Recapture fishers (343)
2021-2025

	Month	%
Taggers	Dec	15%
	Feb	10%
Recaps	Jun	10%
	May	19%
	Jun	13%



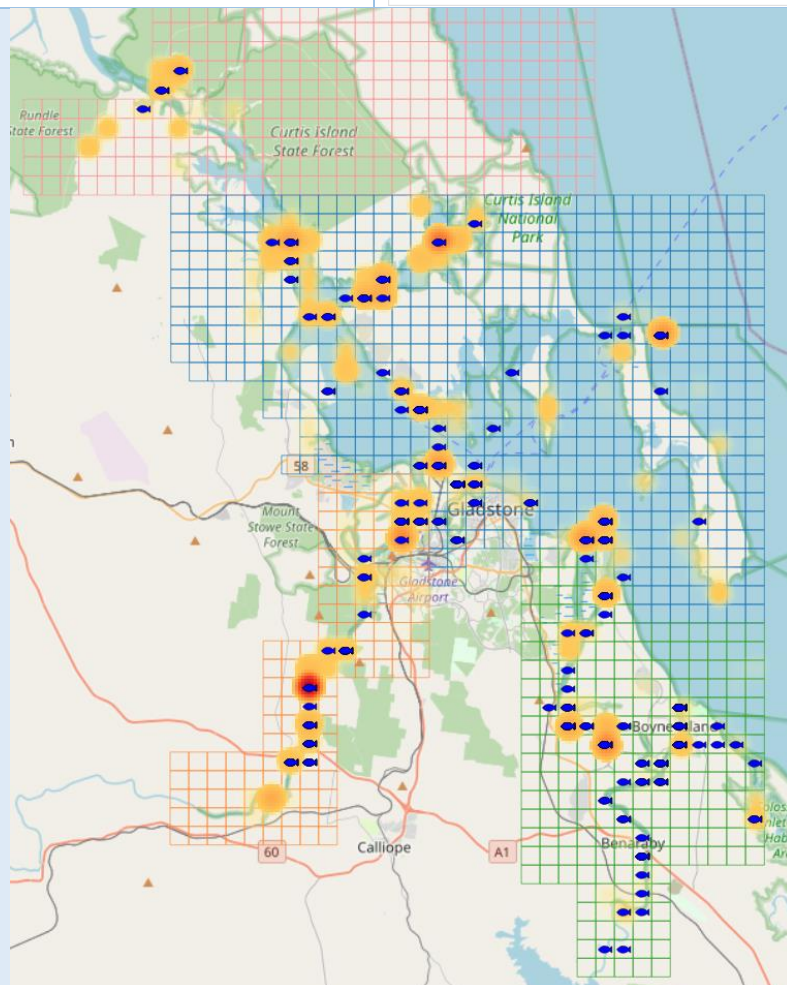
Weekday activity
Days fished
Taggers (1064)
Recapture fishers (343)
2021-2025

	Day	%
Taggers	Weekend	39%
	Weekdays	61%
Recaps	Weekend	48%
	Weekdays	52%



Location activity
Taggers (3,253 fish tagged)
(red-orange heat map)
Recapture fishers (346 fish recaptured)
(blue fish)
2021-2025

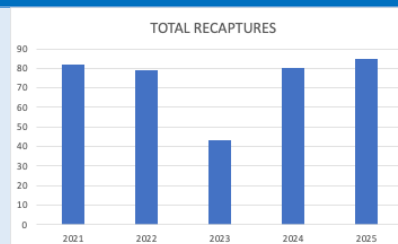
(ex-fish tagged during
 Boyne Tannum Hook Up
 fishing competition)



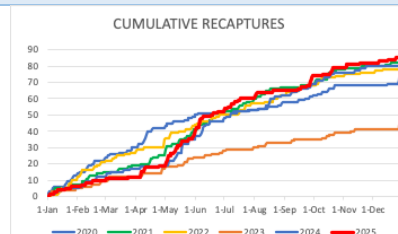
FISHER EFFORT

**Total recaptures
2021-2025**

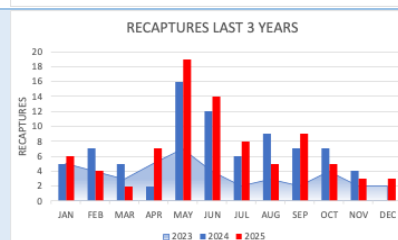
Year	Recaps
2021	82
2022	79
2023	43
2024	80
2025	85



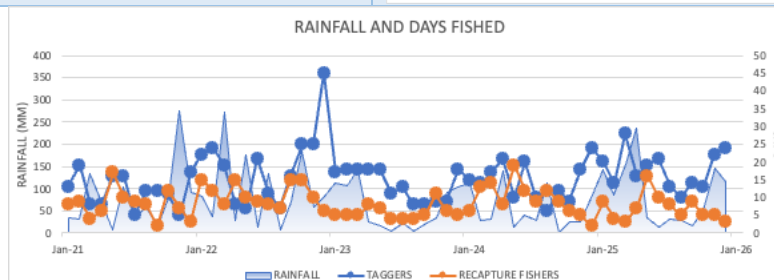
**Cumulative recaptures
2021-2025**



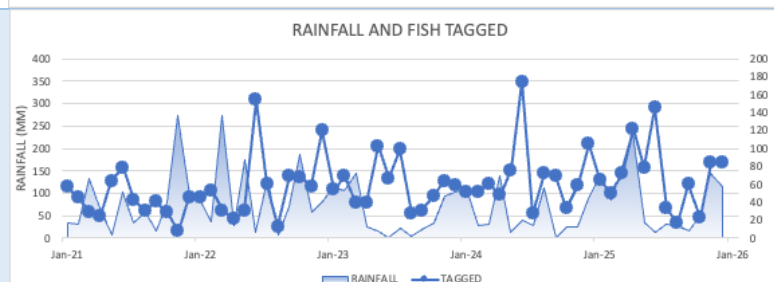
**Recaptures last 3 years
2023-2025**



**Rainfall (mm)
Days fished
Taggers
Recapture fishers
2021-2025**



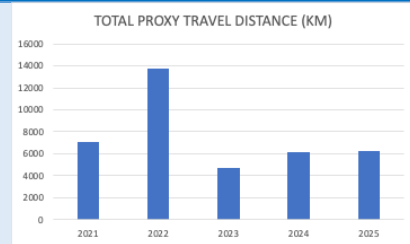
**Rainfall (mm)
Fish tagged
2021-2025**



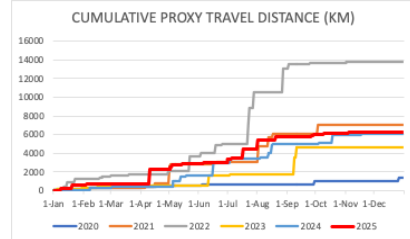
FISHER TRAVEL

Total distance fisher home to recapture location 2021-2025

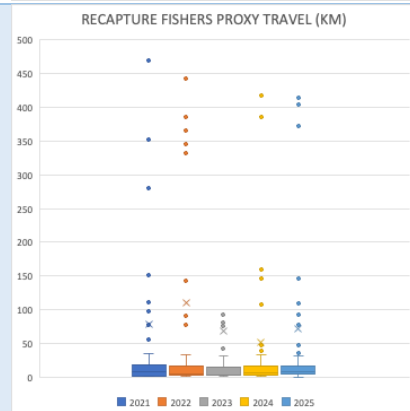
Year	Km
2021	7078
2022	13785
2023	4670
2024	6101
2025	6222



Cumulative distance (km) Fisher home to recapture location 2021-2025

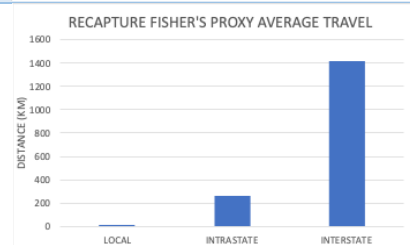


Distance from fisher home to recapture location (<500km) 2021-2025



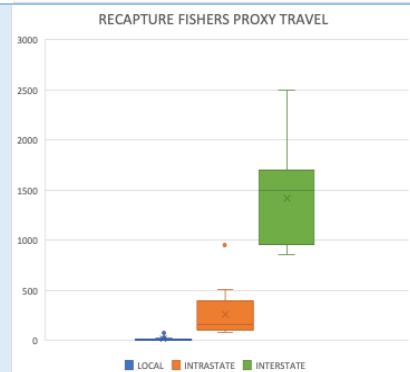
Average distance (km) from home to recapture location 2021-2025

	Av distance (km)
Local	12
Intrastate	264
Interstate	1419

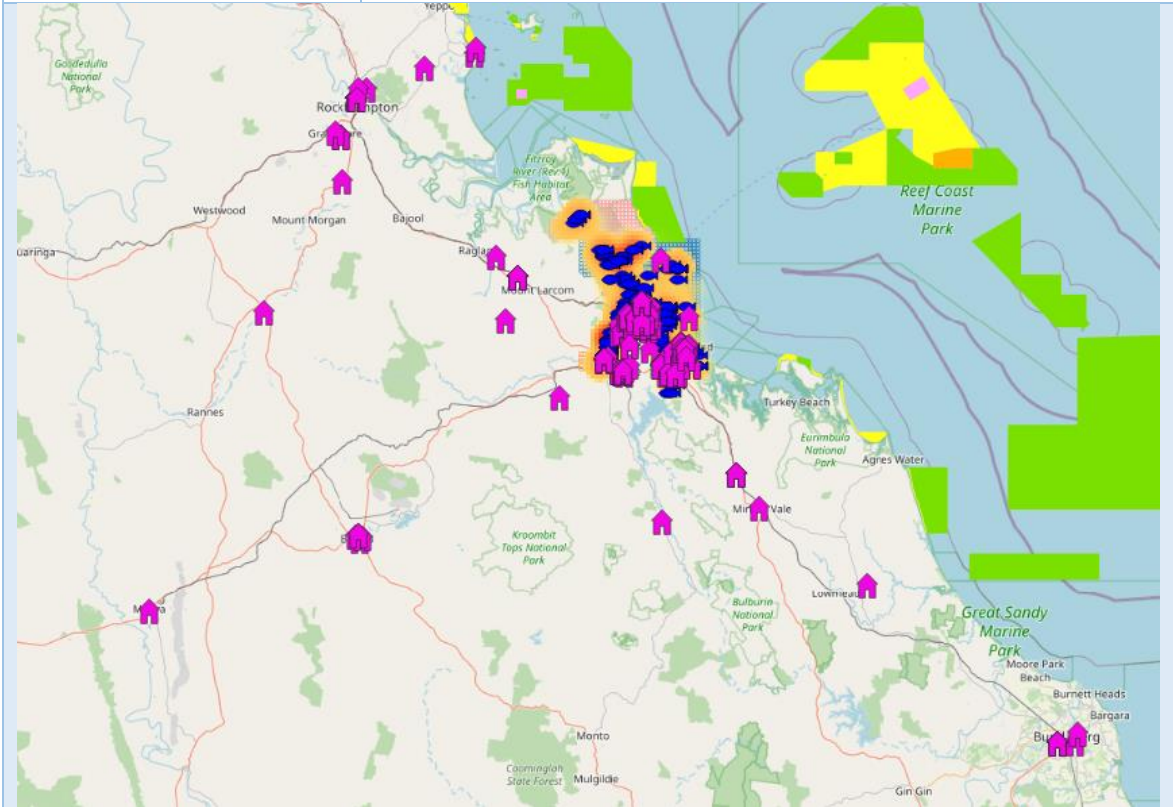


Distance (km) address to recapture location Bars show distance range Dots show outliers 2021-2025

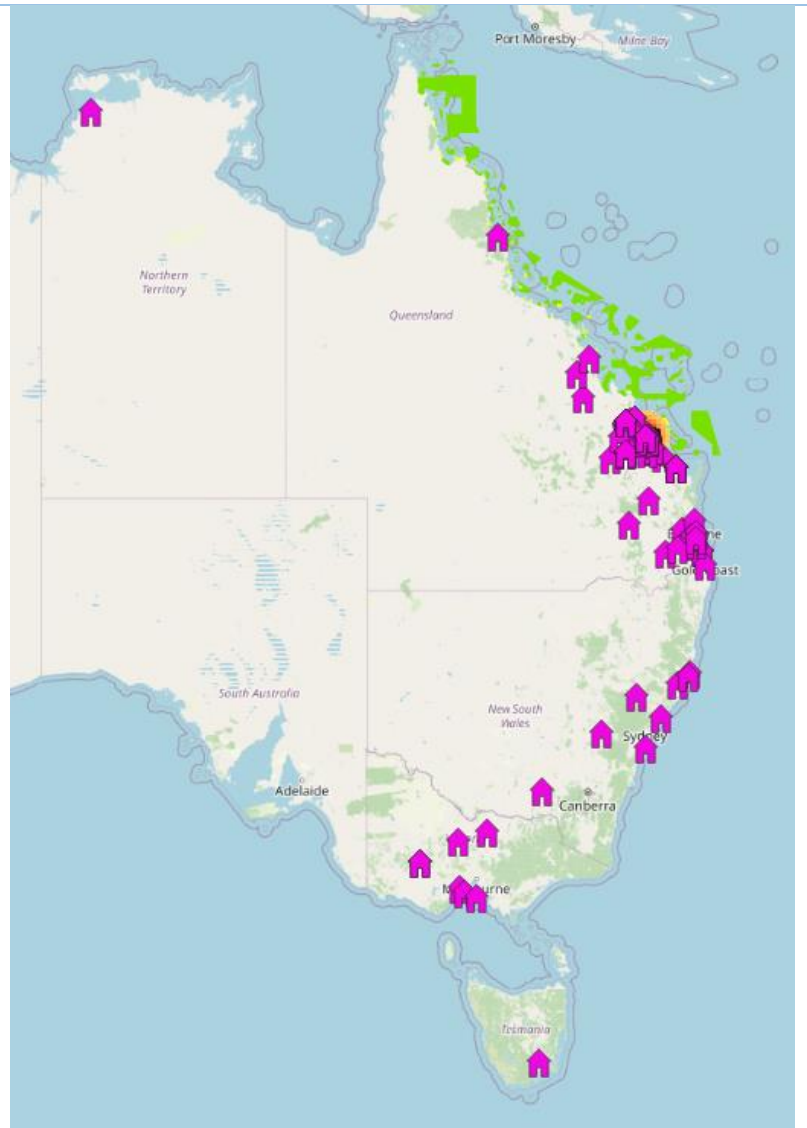
	Range (km)
Local	1-78
Intrastate	81-955
Interstate	855-2503



WHERE RECAPTURE FISHERS LIVE														
Where recapture fishers live	Recapture fishers	370												
	Local	315 (85%)												
	Intrastate	38 (10%)												
	Interstate	17 (5%)												
Local														
Intrastate														
Interstate														
2021-2025														
<div>WHERE RECAPTURE FISHERS LIVE</div> <table border="1"> <caption>WHERE RECAPTURE FISHERS LIVE</caption> <thead> <tr> <th>Residence Type</th> <th>Count</th> <th>Percentage</th> </tr> </thead> <tbody> <tr> <td>LOCAL</td> <td>315</td> <td>85%</td> </tr> <tr> <td>INTRASTATE</td> <td>38</td> <td>10%</td> </tr> <tr> <td>INTERSTATE</td> <td>17</td> <td>5%</td> </tr> </tbody> </table>			Residence Type	Count	Percentage	LOCAL	315	85%	INTRASTATE	38	10%	INTERSTATE	17	5%
Residence Type	Count	Percentage												
LOCAL	315	85%												
INTRASTATE	38	10%												
INTERSTATE	17	5%												
Gladstone Harbour where fishers recapturing fish live (pink houses) Local and Central Qld 2021-2025														



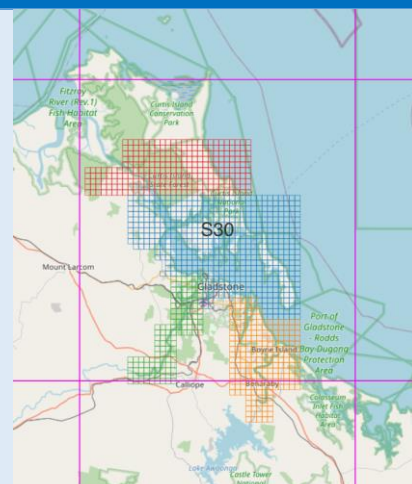
Gladstone Harbour
where fishers recapturing
fish live (pink houses)
Local
Intrastate
Interstate
2021-2025



COMMERCIAL CATCH

Commercial QFISH grid

Grid
S30



ALL CATCH

Commercial net licences

Qfish grid S30

2016-2025

Year

2016

2020

2023

2024

2025 *incomplete

Licences

28

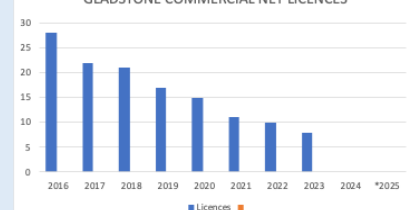
15

8

NA

NA

GLADSTONE COMMERCIAL NET LICENCES



Commercial catch

All species

Qfish grid S30

Days fished

Catch tonnes

2016-2025

*2025 incomplete

Year

2016

2020

2023

2024

2025*

*incomplete

Days

986

402

210

NA

NA

NA

Catch

107.2

26.8

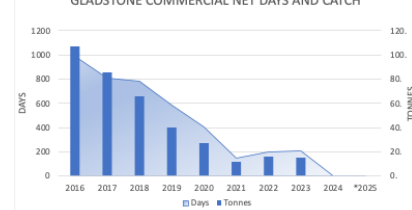
14.8

NA

NA

NA

GLADSTONE COMMERCIAL NET DAYS AND CATCH



Commercial catch

Qfish grid S30

Catch rate (kg/day)

2016-2025

*2025 incomplete

Year

2016

2020

2023

2024

2025*

*incomplete

Kg/day

108.7

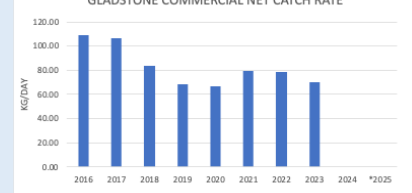
66.7

70.4

NA

NA

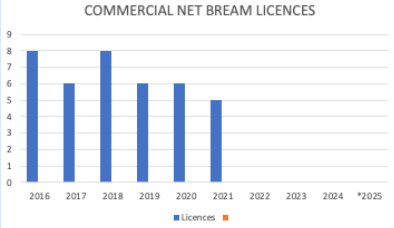
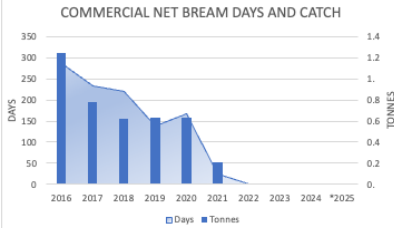
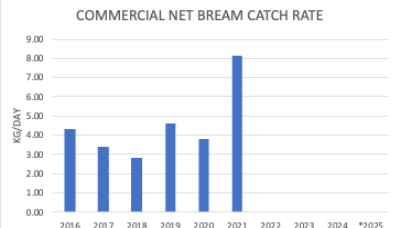
GLADSTONE COMMERCIAL NET CATCH RATE



BARRAMUNDI

Commercial Barramundi net licences Qfish grid S30 2016-2025	Year	Licences		<table><caption>COMMERCIAL NET BARRAMUNDI LICENCES</caption><thead><tr><th>Year</th><th>Licences</th></tr></thead><tbody><tr><td>2016</td><td>15</td></tr><tr><td>2017</td><td>13</td></tr><tr><td>2018</td><td>12</td></tr><tr><td>2019</td><td>10</td></tr><tr><td>2020</td><td>8</td></tr><tr><td>2021</td><td>6</td></tr><tr><td>2022</td><td>7</td></tr><tr><td>2023</td><td>NA</td></tr><tr><td>2024</td><td>NA</td></tr><tr><td>2025</td><td>NA</td></tr></tbody></table>	Year	Licences	2016	15	2017	13	2018	12	2019	10	2020	8	2021	6	2022	7	2023	NA	2024	NA	2025	NA											
	Year	Licences																																			
	2016	15																																			
	2017	13																																			
	2018	12																																			
	2019	10																																			
	2020	8																																			
2021	6																																				
2022	7																																				
2023	NA																																				
2024	NA																																				
2025	NA																																				
2016	15																																				
2020	8																																				
2023	NA																																				
2024	NA																																				
2025 *	NA																																				
*incomplete																																					
Commercial catch Barramundi Qfish grid S30 Days fished Catch tonnes 2016-2025 *2025 incomplete	Year	Days	Catch	<table><caption>COMMERCIAL NET BARRAMUNDI DAYS AND CATCH</caption><thead><tr><th>Year</th><th>Days</th><th>Tonnes</th></tr></thead><tbody><tr><td>2016</td><td>457</td><td>25.4</td></tr><tr><td>2017</td><td>380</td><td>22.0</td></tr><tr><td>2018</td><td>220</td><td>18.0</td></tr><tr><td>2019</td><td>160</td><td>12.0</td></tr><tr><td>2020</td><td>108</td><td>6.0</td></tr><tr><td>2021</td><td>80</td><td>5.0</td></tr><tr><td>2022</td><td>130</td><td>6.0</td></tr><tr><td>2023</td><td>NA</td><td>NA</td></tr><tr><td>2024</td><td>NA</td><td>NA</td></tr><tr><td>2025</td><td>NA</td><td>NA</td></tr></tbody></table>	Year	Days	Tonnes	2016	457	25.4	2017	380	22.0	2018	220	18.0	2019	160	12.0	2020	108	6.0	2021	80	5.0	2022	130	6.0	2023	NA	NA	2024	NA	NA	2025	NA	NA
	Year	Days	Tonnes																																		
	2016	457	25.4																																		
	2017	380	22.0																																		
	2018	220	18.0																																		
	2019	160	12.0																																		
	2020	108	6.0																																		
2021	80	5.0																																			
2022	130	6.0																																			
2023	NA	NA																																			
2024	NA	NA																																			
2025	NA	NA																																			
2016	457	25.4																																			
2020	108	6.0																																			
2023	NA	NA																																			
2024	NA	NA																																			
2025*	NA	NA																																			
*incomplete																																					
Commercial catch Qfish grid S30 Catch rate (kg/day) 2016-2025 *2025 incomplete	Year	Kg/day		<table><caption>COMMERCIAL NET BARRAMUNDI CATCH RATE</caption><thead><tr><th>Year</th><th>Kg/day</th></tr></thead><tbody><tr><td>2016</td><td>55.5</td></tr><tr><td>2017</td><td>63.0</td></tr><tr><td>2018</td><td>45.0</td></tr><tr><td>2019</td><td>55.4</td></tr><tr><td>2020</td><td>55.4</td></tr><tr><td>2021</td><td>63.0</td></tr><tr><td>2022</td><td>80.0</td></tr><tr><td>2023</td><td>NA</td></tr><tr><td>2024</td><td>NA</td></tr><tr><td>2025</td><td>NA</td></tr></tbody></table>	Year	Kg/day	2016	55.5	2017	63.0	2018	45.0	2019	55.4	2020	55.4	2021	63.0	2022	80.0	2023	NA	2024	NA	2025	NA											
	Year	Kg/day																																			
	2016	55.5																																			
	2017	63.0																																			
	2018	45.0																																			
	2019	55.4																																			
	2020	55.4																																			
2021	63.0																																				
2022	80.0																																				
2023	NA																																				
2024	NA																																				
2025	NA																																				
2016	55.5																																				
2020	55.4																																				
2023	NA																																				
2024	NA																																				
2025*	NA																																				
*incomplete																																					

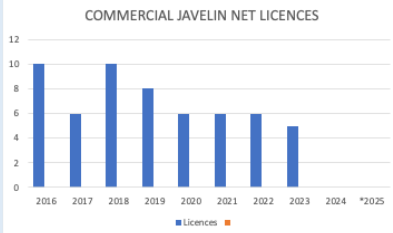
BREAM

Commercial Bream net licences Qfish grid S30 2016-2025	Year	Licences		
	2016	8		
	2020	6		
	2021	5		
	2022	NA		
	2025*	NA		
*incomplete				
Commercial catch Bream Qfish grid S30 Days fished Catch tonnes 2016-2025 *2025 incomplete	Year	Days	Catch	
	2016	287	1.3	
	2020	168	0.6	
	2021	26	0.2	
	2022	NA	NA	
	2025*	NA	NA	
*incomplete				
Commercial catch Qfish grid S30 Catch rate (kg/day) 2016-2025 *2025 incomplete	Year	Kg/day		
	2016	4.3		
	2020	3.8		
	2021	8.1		
	2022	NA		
	2025*	NA		
*incomplete				

JAVELIN

Commercial Bream net licences Qfish grid S30 2016-2025	Year	Licences	
	2016	10	
	2020	6	
	2023	5	
	2024	NA	
	2025*	NA	
	*incomplete		

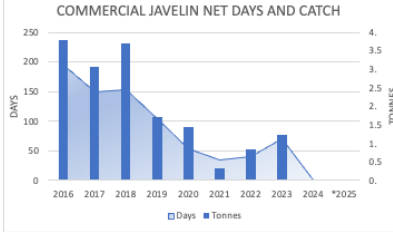
COMMERCIAL JAVELIN NET LICENCES



Year	Licences
2016	10
2017	6
2018	10
2019	8
2020	6
2021	6
2022	6
2023	5
2024	0
*2025	0

Commercial catch Javelin Qfish grid S30 Days fished Catch tonnes 2016-2025 *2025 incomplete	Year	Days	Catch
	2016	195	3.8
	2020	54	1.5
	2023	70	1.2
	2024	NA	NA
	2025*	NA	NA
	*incomplete		

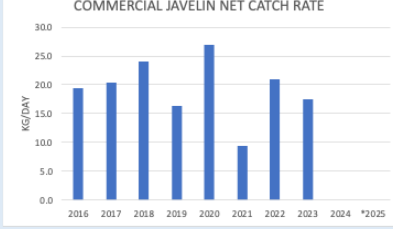
COMMERCIAL JAVELIN NET DAYS AND CATCH








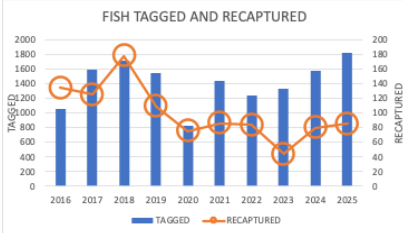

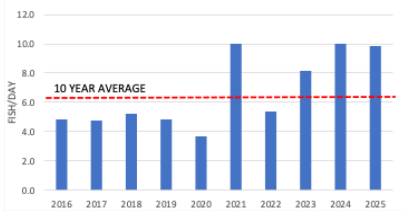
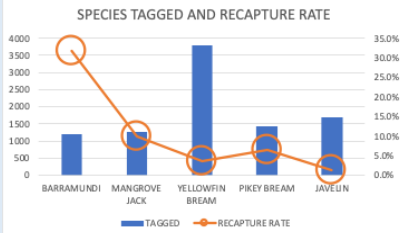
Year	Days	Tonnes
2016	195	3.8
2017	154	3.0
2018	154	3.5
2019	100	2.5
2020	54	1.5
2021	20	0.5
2022	50	1.0
2023	70	1.2
2024	0	0
*2025	0	0

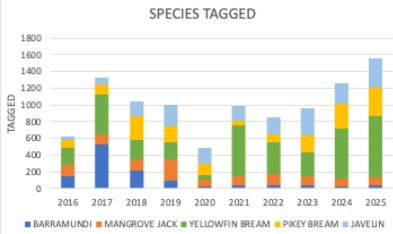
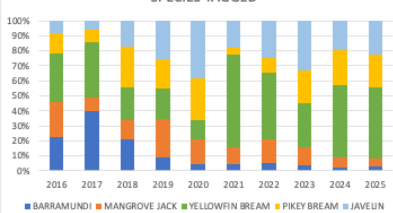
Commercial catch Qfish grid S30 Catch rate (kg/day) 2016-2025 *2025 incomplete	Year	Kg/day
	2016	19.5
	2020	26.9
	2023	17.4
	2024	NA
	2025*	NA
	*incomplete	

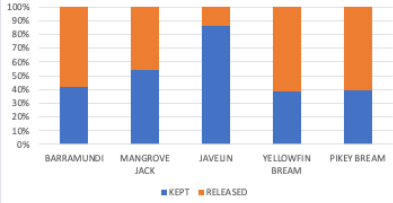
COMMERCIAL JAVELIN NET CATCH RATE



Year	Kg/day
2016	19.5
2017	20.0
2018	24.0
2019	16.0
2020	26.9
2021	9.0
2022	20.0
2023	17.0
2024	0
*2025	0

KEY SPECIES				
BARRAMUNDI		MANGROVE JACK		BARRED JAVELIN
				
YELLOWFIN BREAM		PIKEY BREAM		
				
TAGGED AND TAG RATE				
All fish Tagged Recaptured 2016-2025		Tagged Recaptured Recapture rate Tagged 2025	14147 1000 7.1% 1823	
				
Taggers Days fished Tagged fish 2016-2025		High Fisher days 2017 337 Tagged 2018 1716	Low 2021 144 2020 819	Now 2025 185 2025 1823
				
Tag rates Fish/day 2016-2025		High Tag rate 2024 10.0	Low 2020 3.7	Now 2025 9.9
				
Fish tagged and recapture rate 2016-2025		Recapture rate		
		All fish Barramundi Mangrove Jack Yellowfin Bream Pikey Bream Barred Javelin	7.1% 31.8% 9.8% 3.5% 6.4% 1.3%	

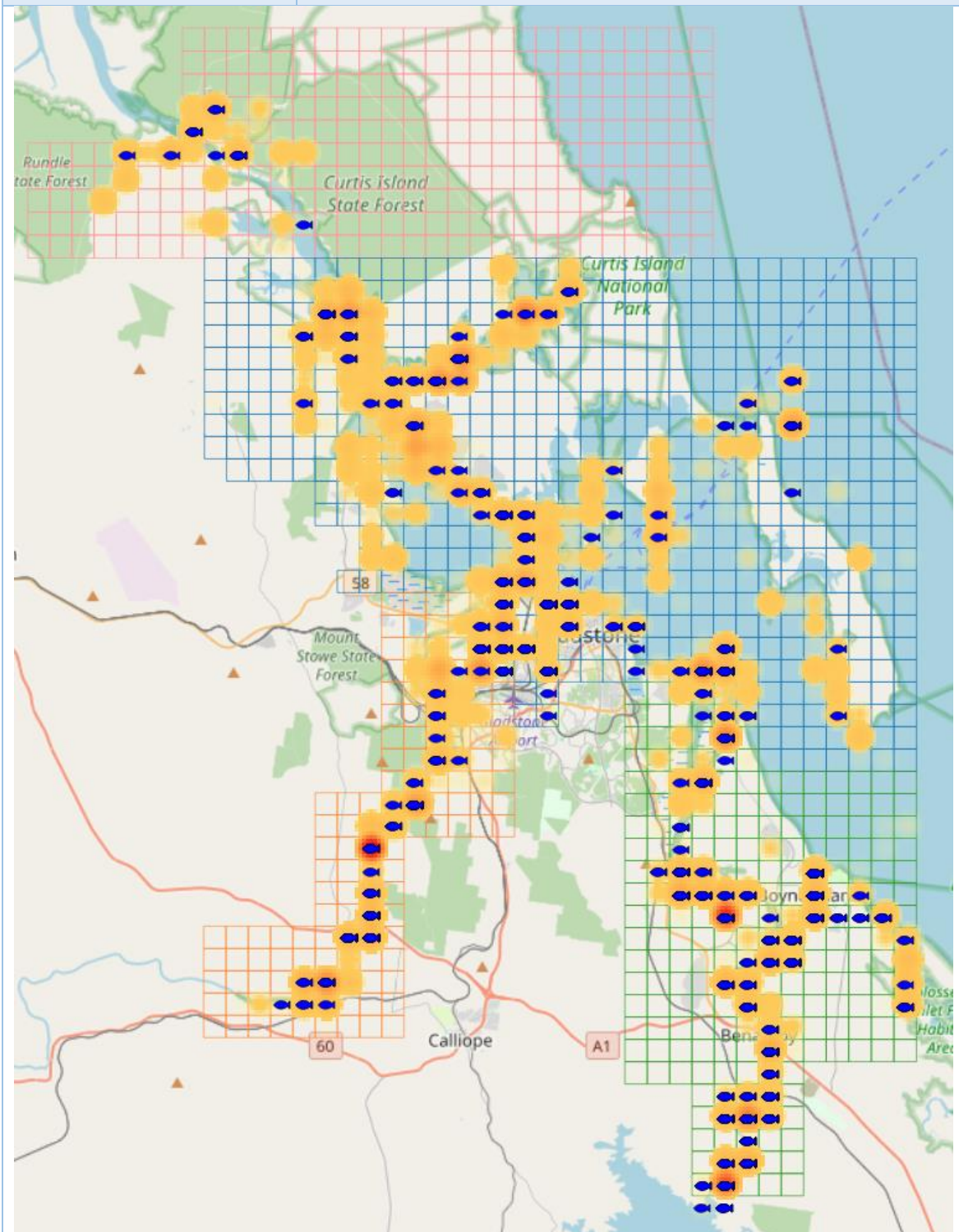
SPECIES			
Species composition Numbers tagged 2016-2025	Species	Tagged	
	Barramundi	1197	
	Mangrove Jack	1272	
	Barred Javelin	2056	
	Yellowfin Bream	3783	
	Pikey Bream	1776	
	All fish	13830	
Species composition Percentage tagged 2016-2025	Species	%Tagged	
	Barramundi	8%	
	Mangrove Jack	9%	
	Barred Javelin	15%	
	Yellowfin Bream	27%	
	Pikey Bream	13%	




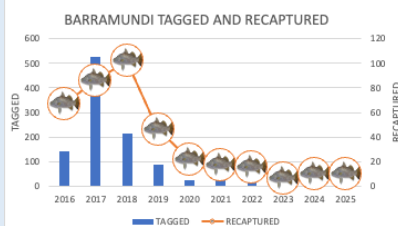
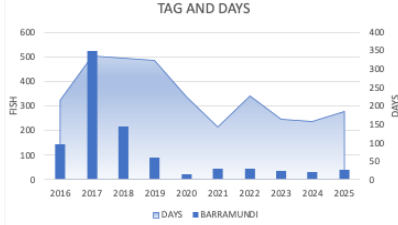
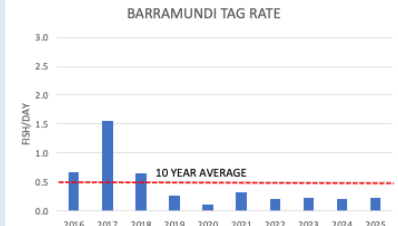
FATE			
Legal fish recaptured by recreational fishers (ex- taggers) Barramundi during open season only 2021-2025		Kept	
	Barramundi	15 (42%)	
	Mangrove Jack	20 (54%)	
	Barred Javelin	6 (86%)	
	Yellowfin Bream	31 (39%)	
	Pikey Bream	20 (39%)	

LOCATIONS

Fisher activity
Fish tagged (red-orange
heat map)
Recaptures (blue fish)
2021-2025

Fish tagged 8858
Recaptures 379
Heat map excludes fish tagged at Boyne Tannum Hook Up



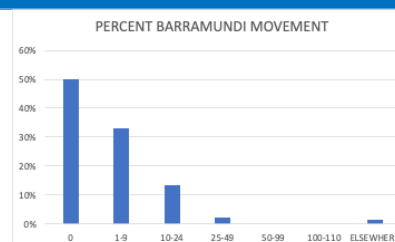
BARRAMUNDI					
					
DATA RELIABILITY					
Sample size (fish/year) Tagged (blue arrow) Recaptured (orange arrow) Confidence % Error % 2021-2025	Reliability level	LOW		MODERATE	
	Samples	10	41	68	
	Confidence	80%	80%	90%	
	Error	20%	10%	5%	
					
TAGGED AND TAG RATE					
Barramundi Tagged Recaptured Recapture rate 2016-2025	Tagged	1197			
	Recaptured	381			
	Recapture rate	31.8%			
	Tagged 2025	41			
Taggers Days fished Tagged fish 2016-2025	High	Low	Now		
	Fisher days	2017	2021		2025
	337	144	185		
	Catch	2017	2020		2025
	525	23	41		
Tag rates Fish/day 2016-2025	High	Low	Now		
	Catch rate	2017	2020		2025
	1.6	0.1	0.2		

LENGTHS				
Lengths (mm) Tagged fish Bars show length range Dots show outliers 2016-2025	High	Low	Now	
	Average length (mm)			
	2018	2022	2025	
	751	629	817	
	Max length (mm)			
	2016	2020	2025	
1200	1040	1150		
All fish lengths percentage Undersize <580mm Legal 580-1000mm Trophy 1000+mm 2016-2025	High	Low	Now	
	Legal-trophy			
	2018	2022	2025	
	66%	36%	66%	
	Trophy			
	2023	2016	2025	
16%	6%	24%		

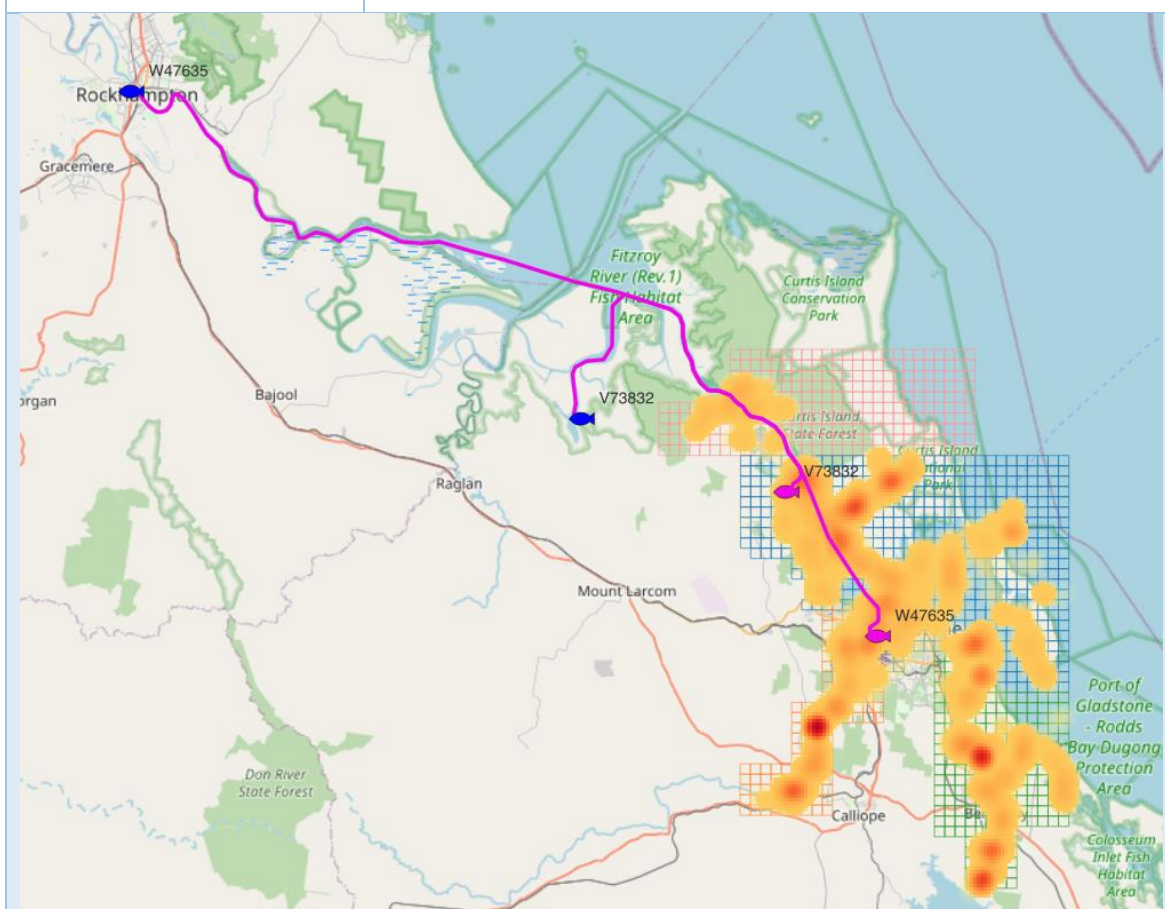
MOVEMENT

**Barramundi distance
moved (km)
2016-2025**

Recaptures	142
Same area	71 (50%)
1-9km	47 (33%)
10-24km	19 (13%)
25+km	3 (2%)
Elsewhere	2 (1%)



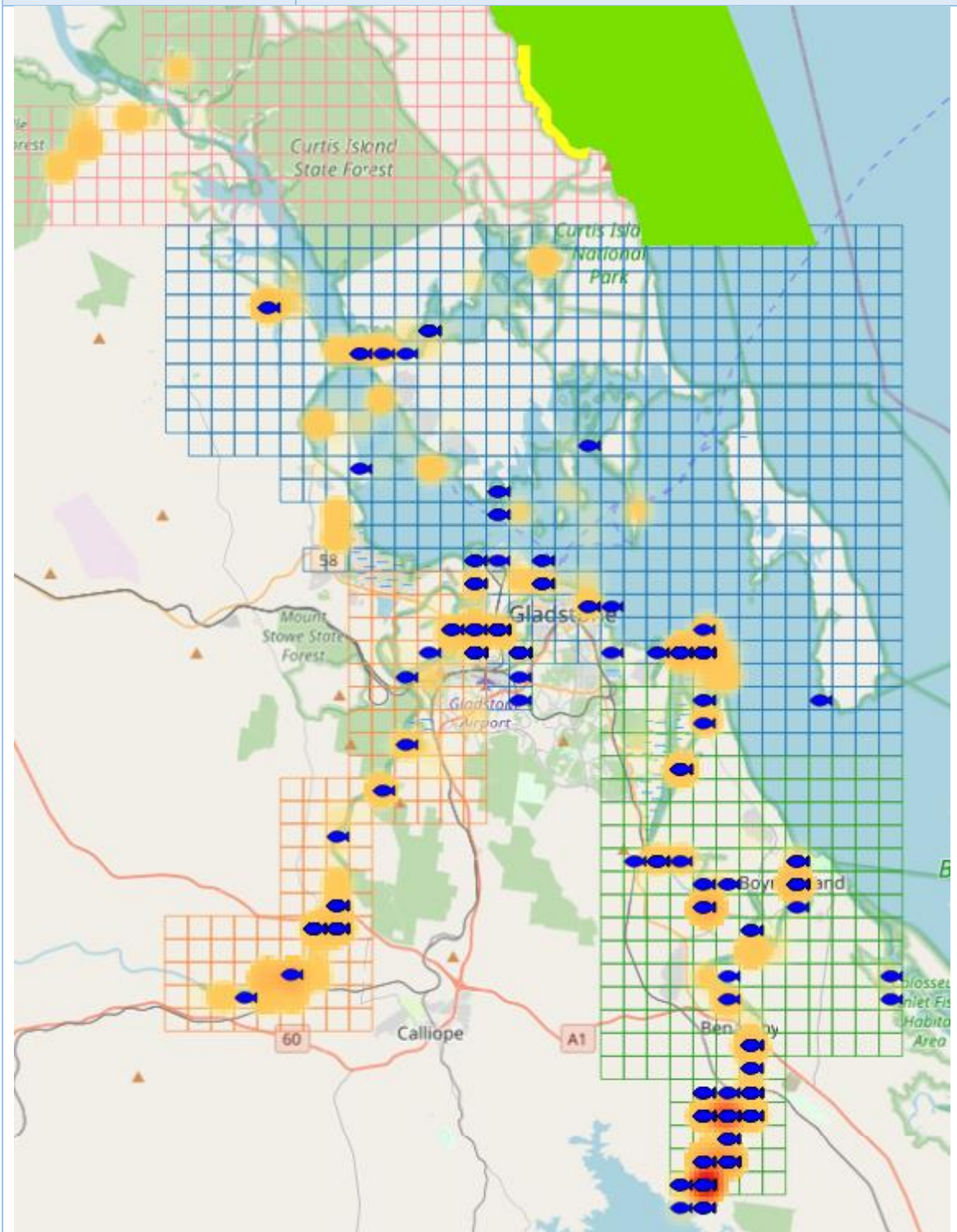
**Barramundi tagged (pink
fish) recaptures outside
Gladstone maps (blue fish)
2016-2025**



LOCATIONS

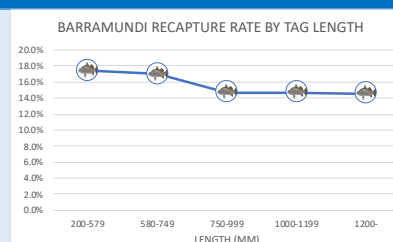
Barramundi
Tagged (red-orange heat map)
Recaptured (blue fish)
2016-2025

Tagged 1197
 Recaptured 381



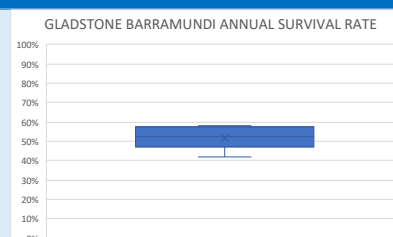
RECAPTURE RATE

Recapture rate by tag length (mm)	Length (mm)	Recap rate
All years	200-579	17.4%
	580-749	17.0%
	750-999	14.7%
	1000-1199	14.7%
	1200-	14.5%
	All	16.3%

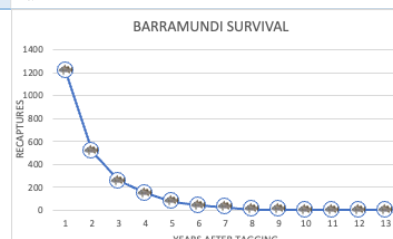


SURVIVAL

Annual survival rate	Annual survival rate
Percentage recaptures each year	Overall 0.52 (52%)
All years	Year 1 0.42 (42%)

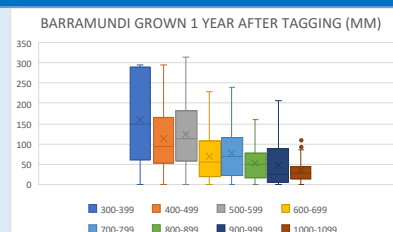


Years survival after tagging	Survival by years out	Recaps
All years	Year 1	1215
	2	510
	5	73
	8	6
	9.4 (max)	1



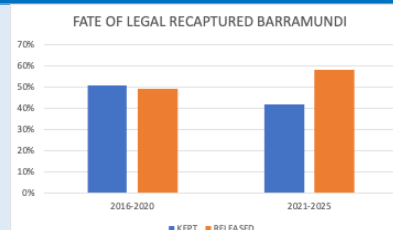
GROWTH

Barramundi growth by length in first year after tagging (mm/year)	Tag length 400-499
All years	112mm/year
	Tag length 700-799
	76mm/year
	Tag length 1000-1099
	35mm/year



FATE

Fate of recaptured legal Barramundi by recfishers (ex-taggers)	Kept
2016-2020	83 (51%)
2021-2025	15 (42%)



MANGROVE JACK



DATA RELIABILITY

Sample size (fish/year)

Tagged (blue arrow)

Recaptured (orange arrow)

Confidence %

Error %

2021-2025

Reliability level	LOW	MODERATE	MODERATE	HIGH
Samples	10	41	68	271
Confidence	80%	80%	90%	90%
Error	20%	10%	10%	5%



TAGGED AND TAG RATE

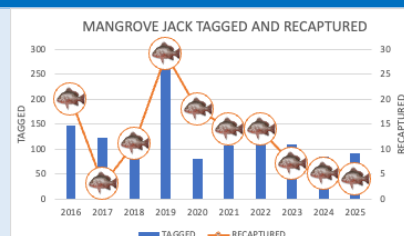
Mangrove Jack

Tagged

Recaptured

2016-2025

Tagged	1272
Recaptured	125
Recapture rate	9.8%
Tagged 2025	92



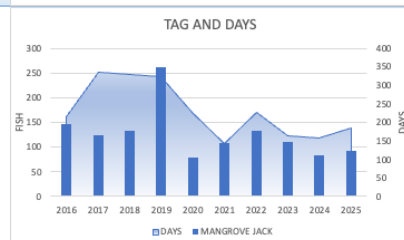
Taggers

Days fished

Tagged fish

2016-2025

High	Low	Now
Fisher days		
2019	2021	2025
136	26	20
Catch		
2019	2020	2025
262	81	69

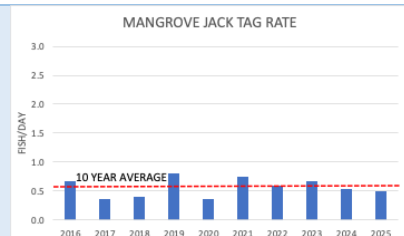


Tag rate

Fish/day

2016-2025

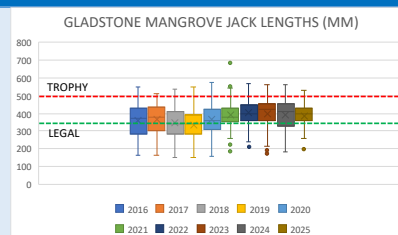
High	Low	Now
Catch rate		
2021	2017	2025
0.8	0.4	0.5
10 year average		0.55



LENGTHS

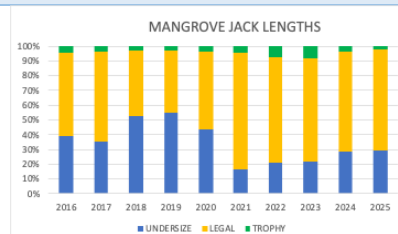
Tag lengths of fish (mm)
Bars show length range
Dots show outliers
2016-2025

High	Low	Now
Average length (mm)		
2022	2019	2025
400	336	373
Max length (mm)		
2021	2017	2025
685	510	565



Percentage
Undersize <350mm
Legal 350-500mm
Trophy 500+mm
2016-2025

High	Low	Now
Legal-trophy		
2021	2019	2025
79%	42%	68%
Trophy		
2023	2019	2025
9%	3%	2%

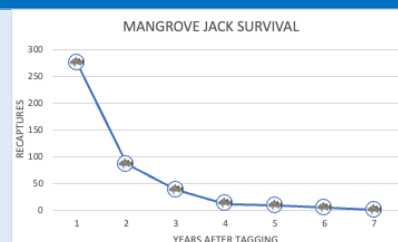


Size composition influenced by live fish weigh-in at BTHU where only legal fish can be presented.

SURVIVAL

Years survival after tagging
All years

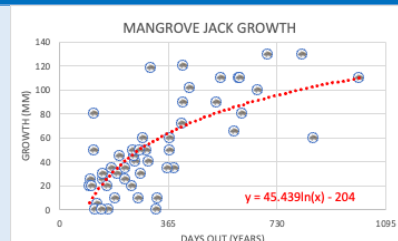
Survival rate by years out	
Year	Recaps
1	276
2	86
5	8
5.8 (max)	1



GROWTH

Growth (mm/year)
All years

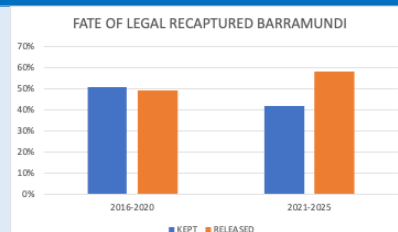
Growth at end of year (mm)	
Year	mm
Year 1	64
Year 2	96
Year 3	114
Year 4	127



FATE

Fate of recaptured legal
Mangrove Jack by
recfishers (ex-taggers)
2016-2020
2021-2025

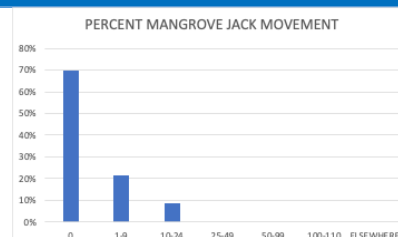
	Kept
2016-2020	24 (47%)
2021-2025	20 (54%)



MOVEMENT

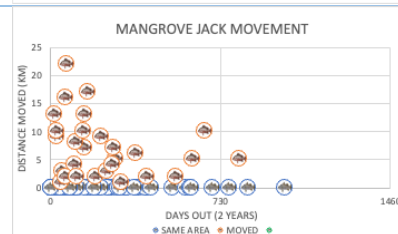
Mangrove Jack distance moved (km) 2016-2025

Recaptures	93
Same area	65 (56%)
1-9km	22 (19%)
10-24km	5 (4%)
25+km	1 (1%)



Mangrove Jack movement over time
Distance (km)
Time (days)
2016-2025

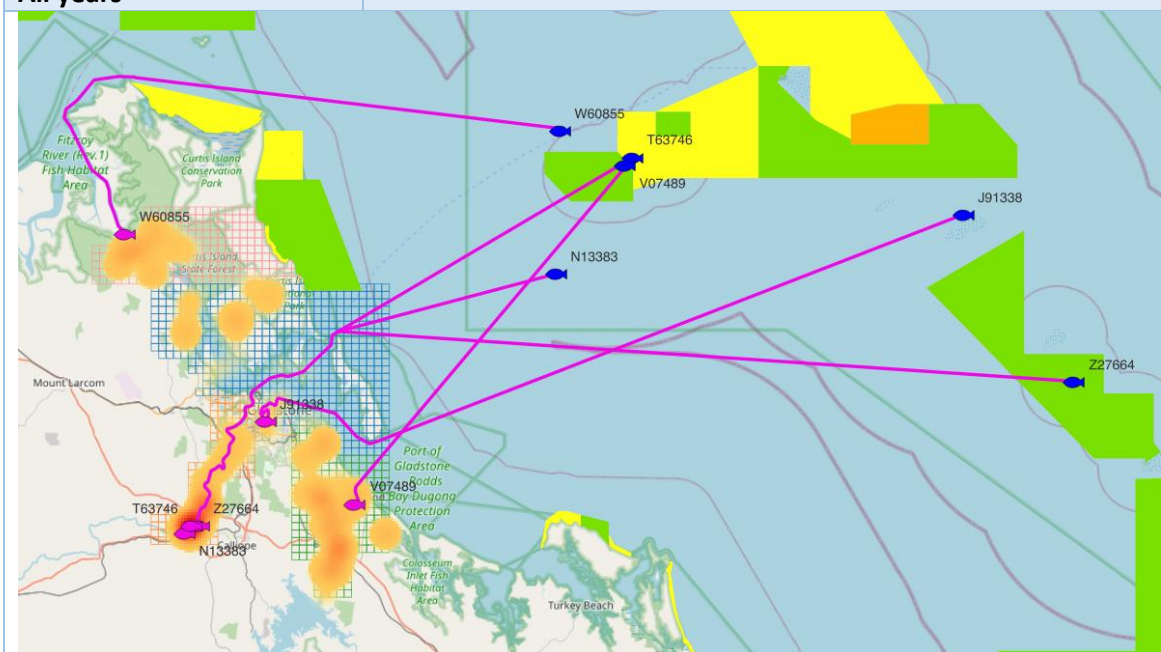
Furthest moved	22km
Days out	70



OFFSHORE MOVEMENT

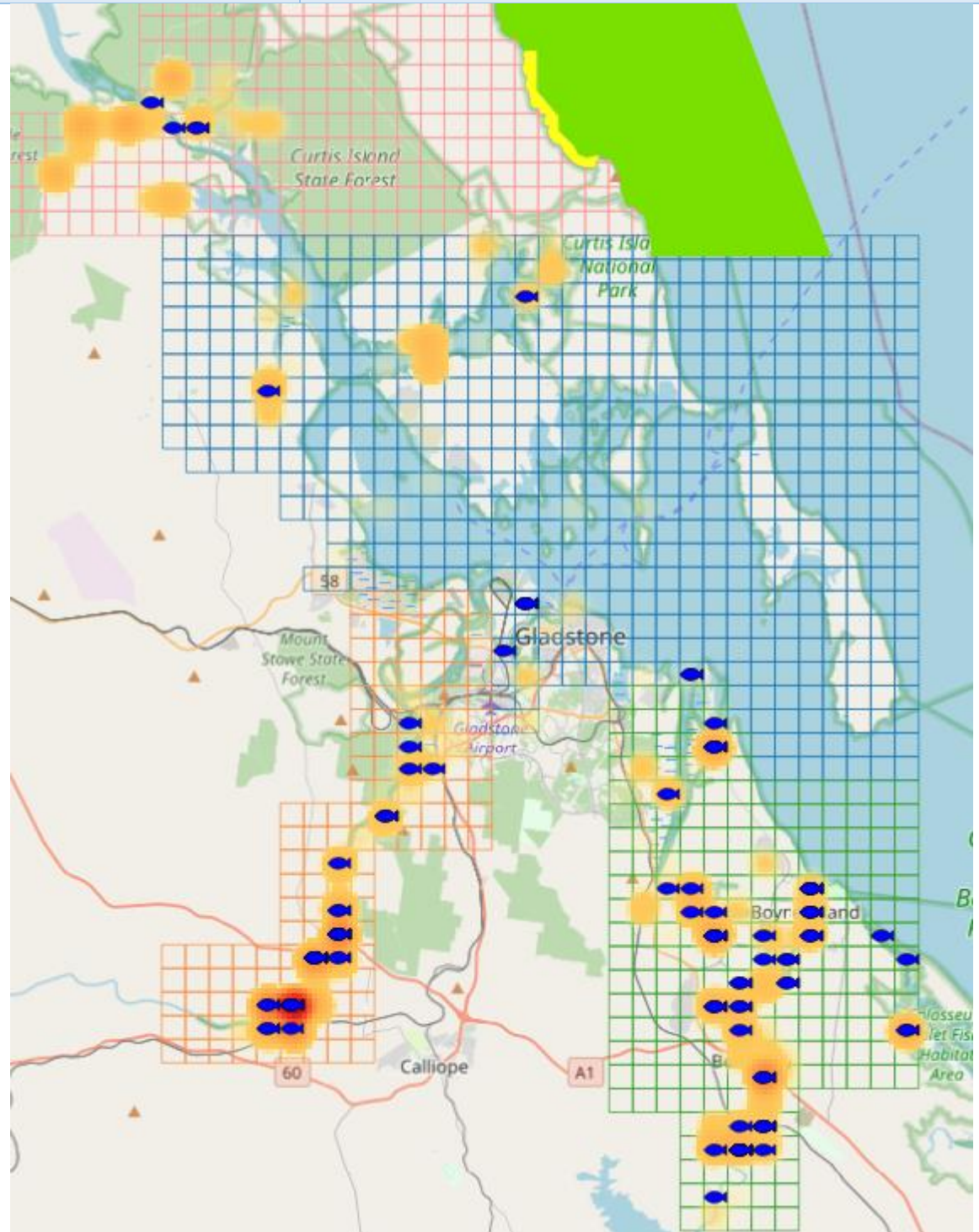
Mangrove Jack
Offshore recaptures
Tagged (pink fish)
Recaptured (blue fish)
All years

Z27664 recaptured prior to GBRMPA zoning as green zone



LOCATIONS

Mangrove Jack	Tagged	972
Tagged (red-orange heat map)	Recaptured	129
Recaptured (blue fish)	Heat map excludes fish tagged at Boyne Tannum Hook Up	
2016-2025		



YELLOWFIN BREAM



DATA RELIABILITY

Sample size (fish/year)
Tagged (blue arrow)
Recaptures (orange arrow)
Confidence %
Error %
2021-2025

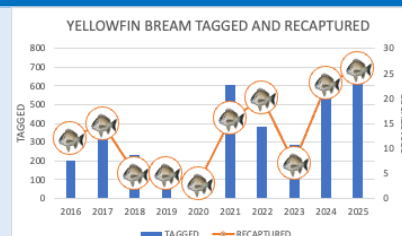
Reliability level	LOW		MODERATE		MODERATE		HIGH
Samples	10	41	68	271	384	664	
Confidence	80%		80%		90%		99%
Error	20%		10%		5%		5%



TAGGED

Yellowfin Bream
Tagged
Recaptured
2016-2025

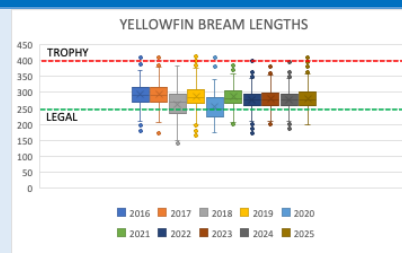
Tagged 3783
Recaptured 132
Recapture rate 3.5%
Tagged 2025 736



LENGTHS

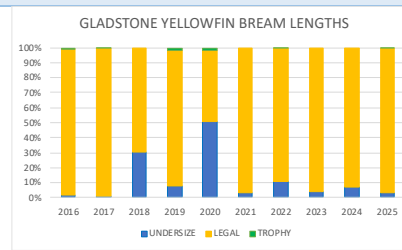
Lengths of fish (mm)
Bars show length range
Dots show outliers
2016-2025

High	Low	Now
2017	2020	2025
294	256	282
Max length		
2019	2018	2025
415	385	410



Fish lengths percentage
Undersize <250mm
Legal 250-400mm
Trophy 400+mm
2016-2025

High	Low	Now
Legal-trophy		
2017	2020	2025
98%	48%	93%
Trophy		
2020	21-24	2025
2%	0%	0%

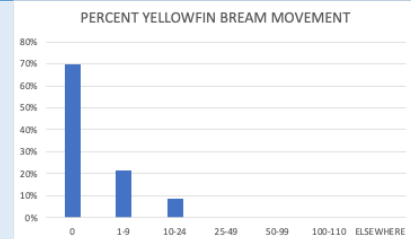


Size composition influenced by live fish weigh-in at BTHU where only legal fish can be presented.

MOVEMENT

**Yellowfin Bream
movement (km)
2016-2025**

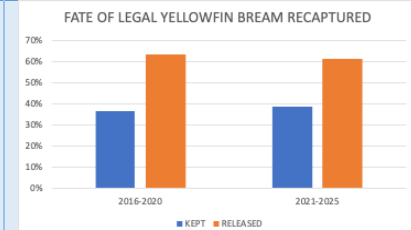
Recaptures	93
Same area	65 (70%)
1-9km	20 (22%)
10-24km	8 (9%)
25+km	0 (0%)



FATE

**Fate of recaptured legal
Yellowfin Bream by
recfishers (ex-taggers)
2016-2020
2021-2025**

	Kept
2016-2020	12 (36%)
2021-2025	31 (39%)



LOCATIONS

Yellowfin Bream

Tagged (red-orange heat map)

Recaptured (blue fish)
2016-2025

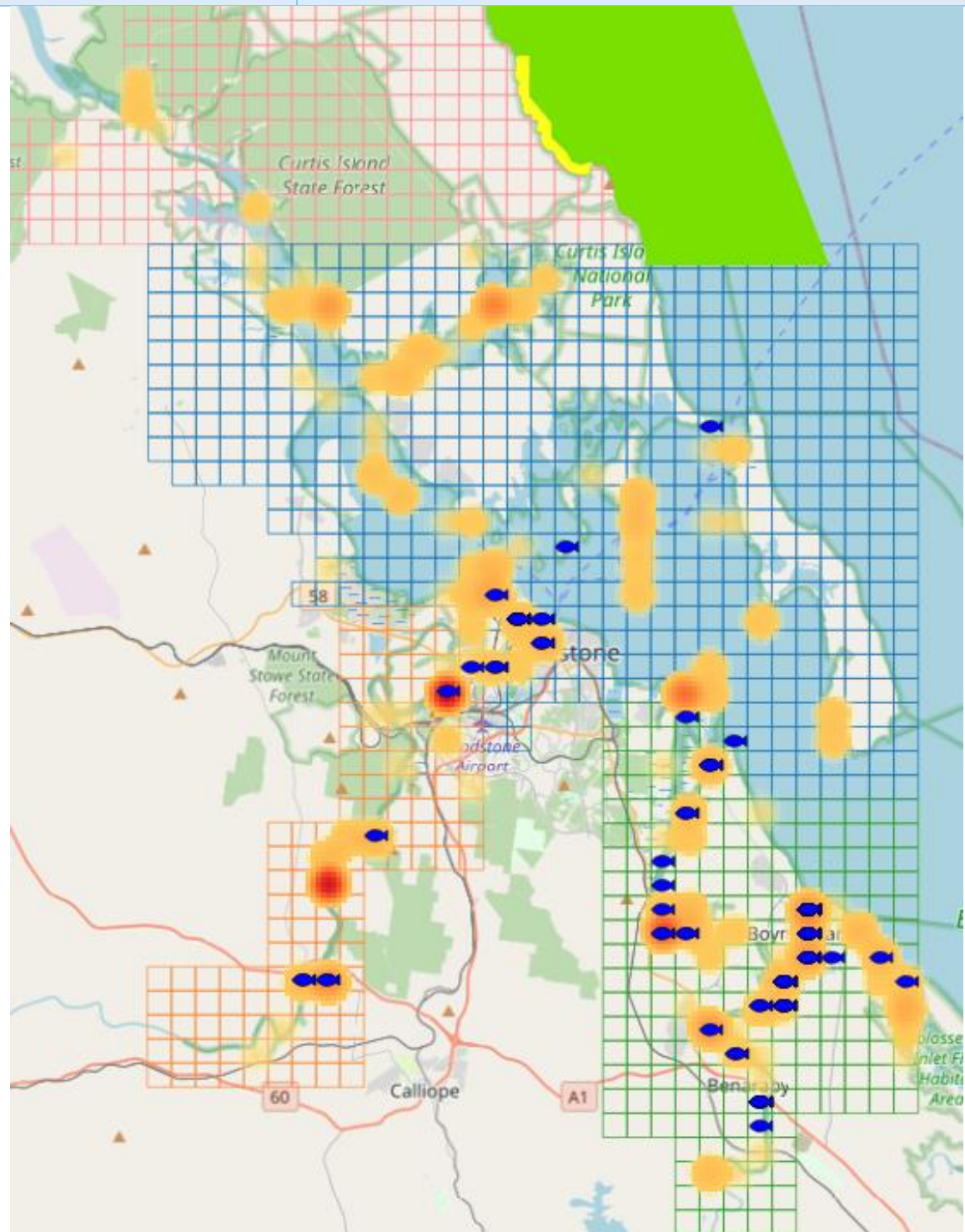
Tagged

565

Recaptured

132

Heat map excludes fish tagged at Boyne Tannum Hook Up



PIKEY BREAM



DATA RELIABILITY

Sample size (fish/year)
Tagged (blue arrow)
Recaptures (orange arrow)
Confidence %
Error %
2021-2025

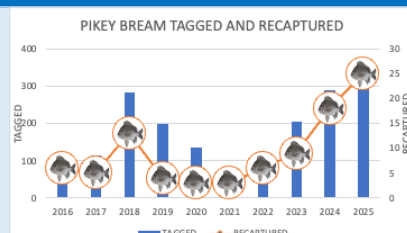
Reliability level	LOW		MODERATE		MODERATE	HIGH	
Samples	10	41	68	271	384	664	
Confidence	80%	80%	90%	90%	95%	99%	
Error	20%	10%	10%	5%	5%	5%	



TAGGED

Pikey Bream
Tagged
Recaptured
2016-2025

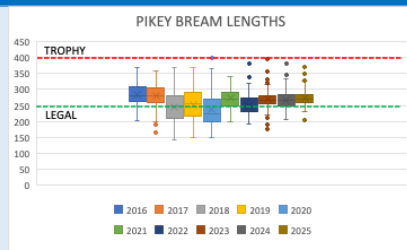
Tagged 1445
Recaptured 92
Recapture rate 6.4%
Tagged 2025 331



LENGTHS

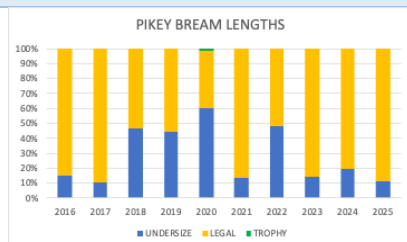
Lengths of fish (mm)
Bars show length range
Dots show outliers
2016-2025

High	Low	Now
Average length		
2016	2020	2025
284	239	273
Max length		
2020	2021	2025
400	340	370



Fish lengths percentage
Undersize <400mm
Legal 400-600mm
Trophy 600+mm
2016-2025

High	Low	Now
Legal-trophy		
2017	2020	2025
89%	38%	89%
Trophy		
No trophy fish any year except 2020		

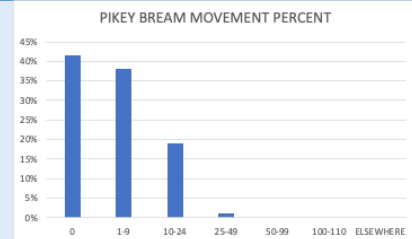


Size composition influenced by live fish weigh-in at BTHU where only legal fish can be presented.

MOVEMENT

**Pikey Bream movement
(km)
2016-2025**

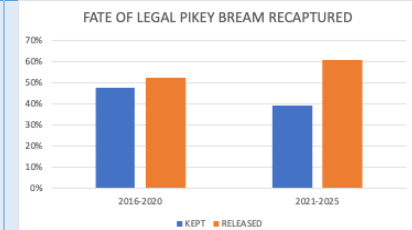
Recaptures	84
Same area	35 (42%)
1-9km	32 (38%)
10-24km	16 (19%)
25+km	1 (1%)



FATE

**Fate of recaptured legal
Yellowfin Bream by
recfishers (ex-taggers)
2016-2020
2021-2025**

	Kept
2016-2020	11 (48%)
2021-2025	20 (39%)



LOCATIONS

Pikey Bream

Tagged (red-orange heat map)

Recaptured (blue fish)
2016-2025

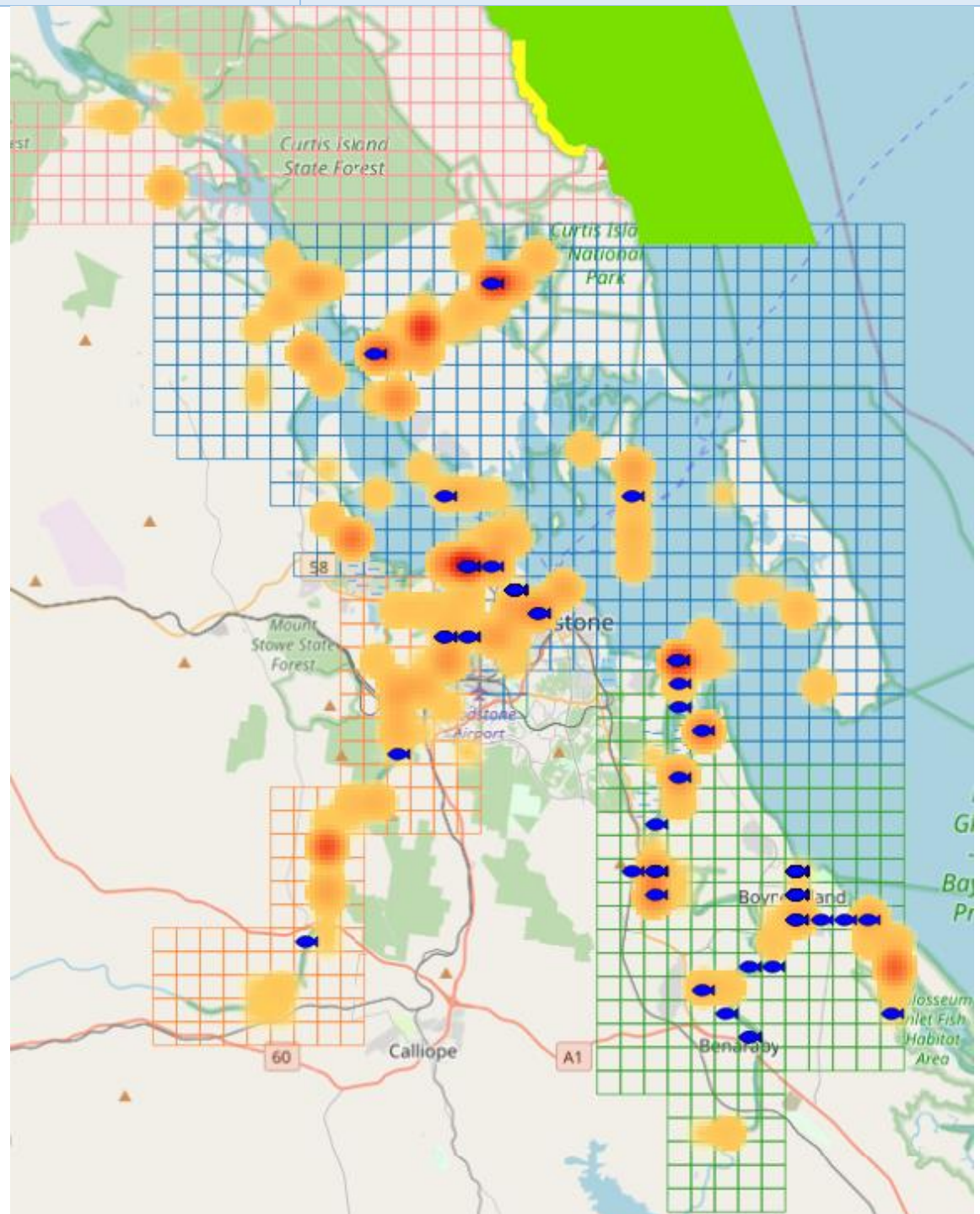
Tagged

1175

Recaptured

92

Heat map excludes fish tagged at Boyne Tannum Hook Up



BARRED JAVELIN



DATA RELIABILITY

Sample size (fish/year)
Tagged (blue arrow)
Recaptures (orange arrow)
Confidence %
Error %
2021-2025

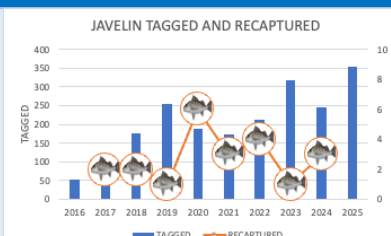
Reliability level	LOW	MODERATE	MODERATE	HIGH
Samples	10	41	68	271
Confidence	80%	80%	90%	95%
Error	20%	10%	10%	5%



TAGGED

Javelin
Tagged
Recaptured
2016-2025

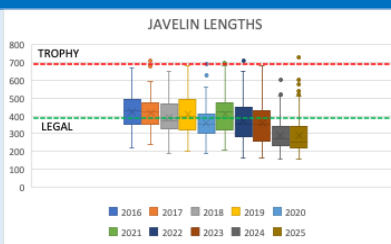
Tagged	1701
Recaptured	22
Recapture rate	1.3%
Tagged 2025	355



LENGTHS

Lengths of fish (mm)
Bars show length range
Dots show outliers
2016-2025

High	Low	Now
Average length		
2016	2023	2025
425	359	291
Max length		
2022	2018	2025
710	650	730



Fish lengths percentage
Undersize <400mm
Legal 400-600mm
Trophy 600+mm
2016-2025

High	Low	Now
Legal-trophy		
2016	2020	2025
60%	27%	16%
Trophy		
2019	2020	2025
9%	2%	2%

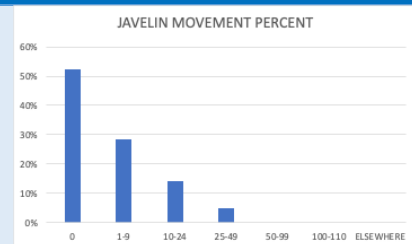


Change in size composition in 2024 due to Javelin no longer included in live fish weigh-in at BTHU. In previous years legal fish were included in live weigh-in. Lengths from 2024 more representative of catch structure.

MOVEMENT

**Javelin movement (km)
2016-2025**

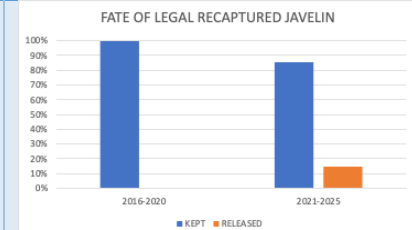
Recaptures	21
Same area	11 (52%)
1-9km	6 (29%)
10-24km	3 (14%)
25+km	1 (5%)



FATE

**Fate of recaptured legal
Javelin by recfishers (ex-
taggers)
2016-2020
2021-2025**

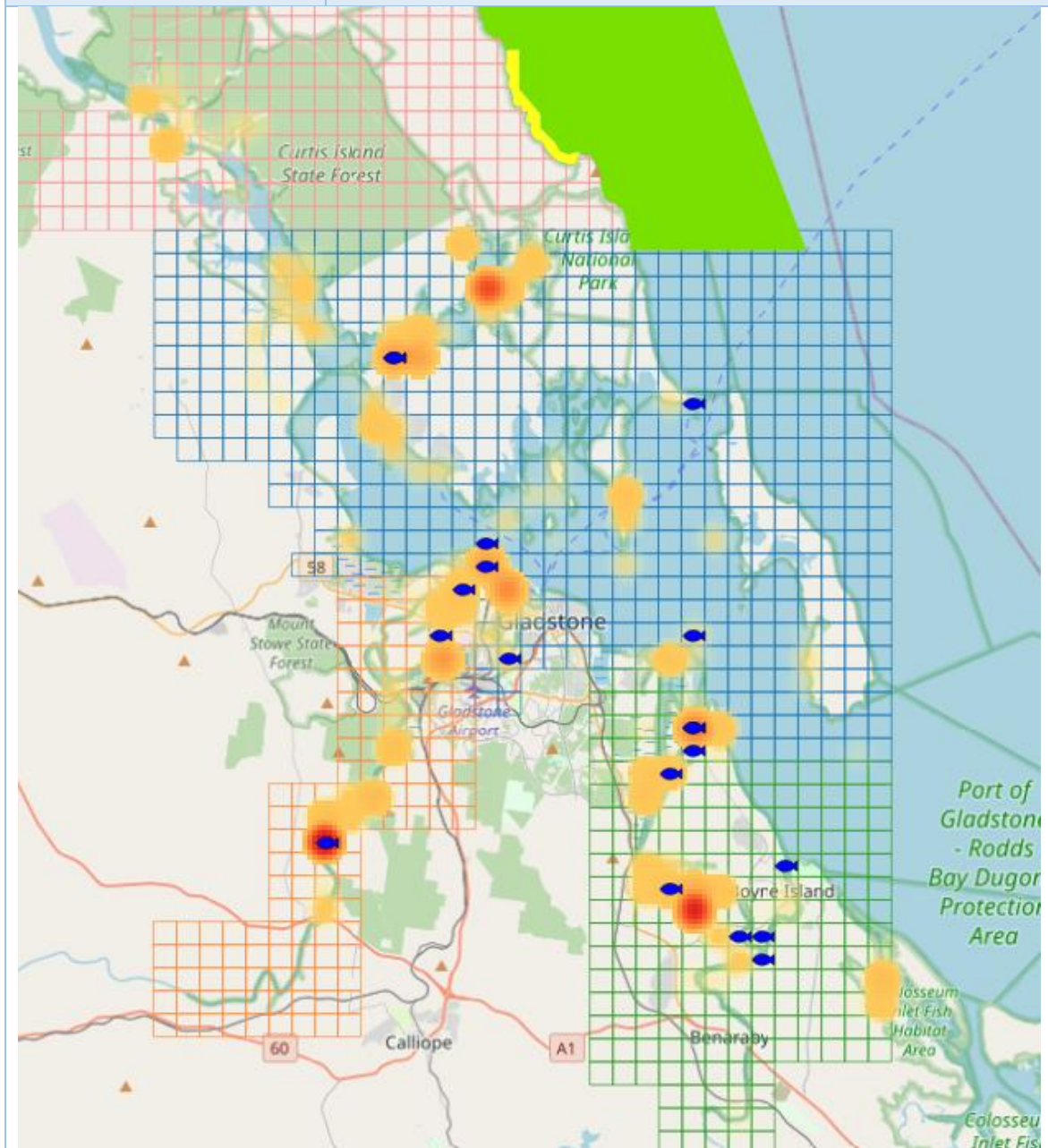
	Kept
2016-2020	4 (100%)
2021-2025	6 (86%)



LOCATIONS

Barred Javelin
Tagged (red-orange heat map)
Recaptured (blue fish)
2016-2025

Tagged 1701
 Recaptured 22
 Heat map excludes fish tagged at Boyne Tannum Hook Up



BOYNE TANNUM HOOK UP COMPETITION

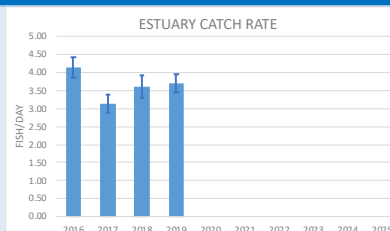


Boyne Tannum Hookup
2016-2025
Event cancelled in 2020 due
to Covid-19 restrictions

BOAT RAMP SURVEYS

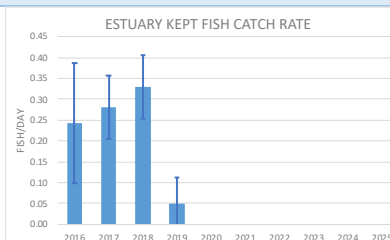
Boat ramp surveys
Estuary catch rates
(fish/day)
2016-2025
(no surveys after 2019)

High	Low	Now
Catch rate		
2016	2017	2025
4.2	3.1	NA



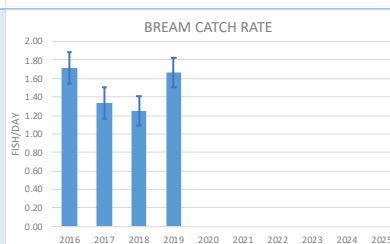
Boat ramp surveys
Estuary catch rates
(fish kept/day)
2016-2025
(no surveys after 2019)

High	Low	Now
Kept fish catch rate		
2018	2019	2025
0.3	0.05	NA



Boat ramp surveys
Bream catch
(Yellowfin and Pikey)
(Fish/day)
2016-2025
(no surveys after 2019)

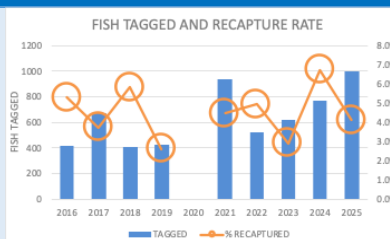
High	Low	Now
Bream catch rate		
2016	2018	2025
1.7	1.3	NA



TAGGED

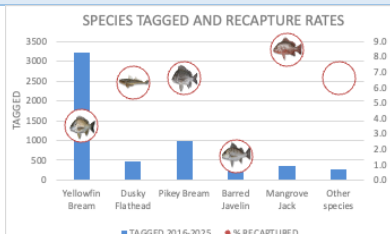
Live weigh-in
Fish tagged
Recaptures from each year
2016-2025

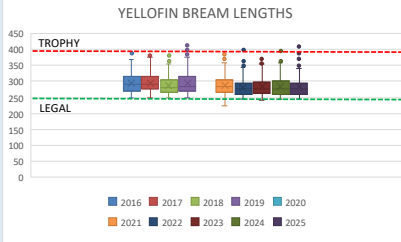
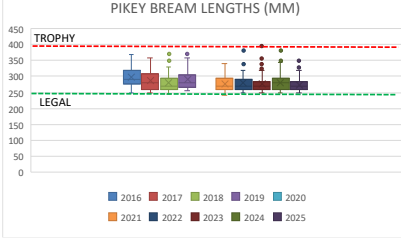
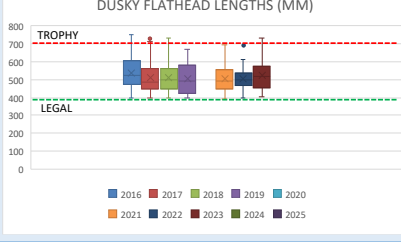
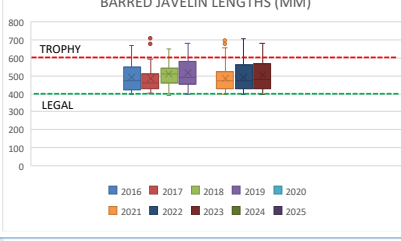
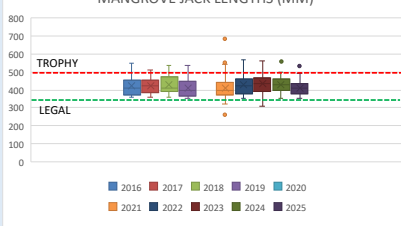
High	Low	Now
Fish tagged		
2021	2018	2025
938	412	998
Recaptured (%)		
2024	2023	2025
6.7%	2.9%	4.1%



Species
Tagged
Recapture rates (%)
2016-2025

Recapture rate	
Yellowfin Bream	3.5%
Dusky Flathead	6.4%
Pikey Bream	6.6%
Barred Javelin	1.5%
Mangrove Jack	8.4%



LENGTHS				
Lengths of fish (mm) Yellowfin Bream Bars show length range Dots show outliers 2016-2025	High	Low	Now	
	Average length			
	2019	2022	2025	
	296	281	282	
	Max length			
	2019	2023	2025	
	415	380	410	
Lengths of fish (mm) Pikey Bream Bars show length range Dots show outliers 2016-2025	High	Low	Now	
	Average length			
	2016	2023	2025	
	297	277	275	
	Max length			
	2023	2021	2025	
	395	340	360	
Lengths of fish (mm) Dusky Flathead Bars show length range Dots show outliers 2016-2025	High	Low	Now	
	Average length			
	2016	2022	2025	
	538	507	NA	
	Max length h			
	2016	2019	2025	
	750	670	NA	
Lengths of fish (mm) Barred Javelin Bars show length range Dots show outliers 2016-2025	High	Low	Now	
	Average length			
	2019	2013	2025	
	512	464	NA	
	Max length			
	2017	2013	2025	
	710	630	NA	
Lengths of fish (mm) Mangrove Jack Bars show length range 2016-2025	High	Low	Now	
	Average length			
	2018	2021	2025	
	429	408	410	
	Max length			
	2021	2017	2025	
	685	510	530	
				
				
				
				
				

MOVEMENT

Days to recapture after release

Bray Park

Gladstone Marina

2016-2025

Days out

0-7 14 (5%)

8-30 61 (23%)

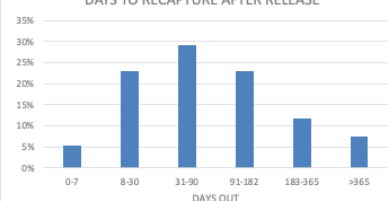
31-90 77 (29%)

91-182 61 (23%)

183-365 31 (12%)

>365 20 (8%)

DAYS TO RECAPTURE AFTER RELEASE



Tagged fish released at

Bray Park

Gladstone Marina

Distance moved (km)

2016-2025

Bray Park Marina

Same area 42% 43%

1-9 38% 21%

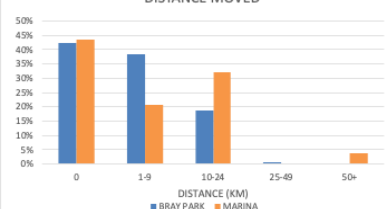
10-24 19% 32%

25+ 1% 0%

Max distance 43 135

Recaps 198 53

DISTANCE MOVED

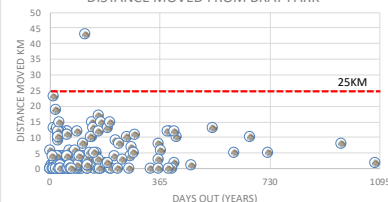


Distance moved from Bray Park

Park

2016-2025

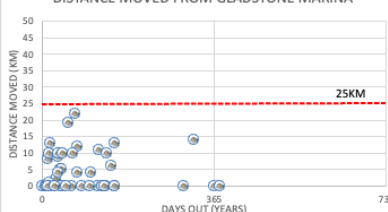
DISTANCE MOVED FROM BRAY PARK



Distance moved from Gladstone Marina

2016-2025

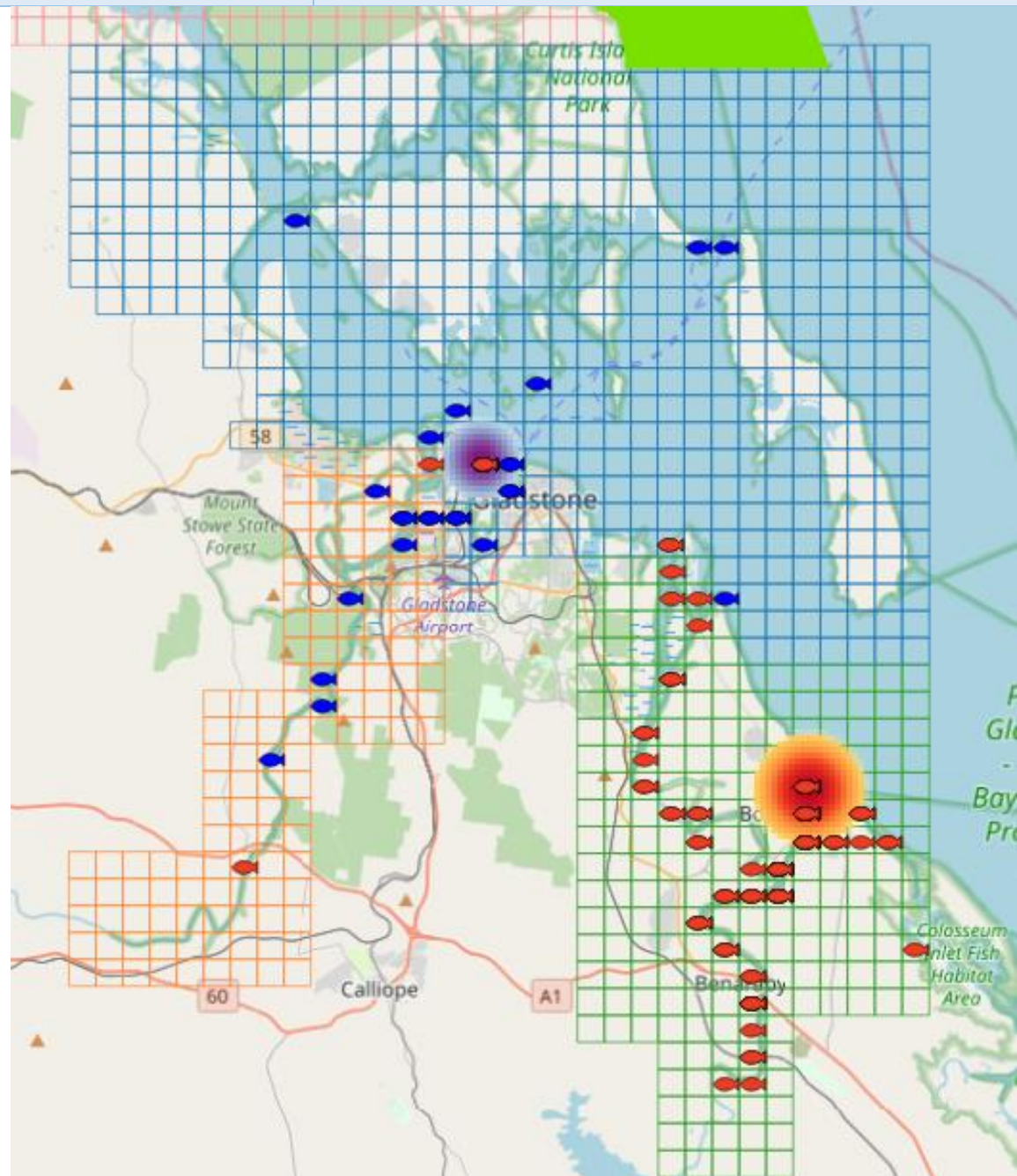
DISTANCE MOVED FROM GLADSTONE MARINA



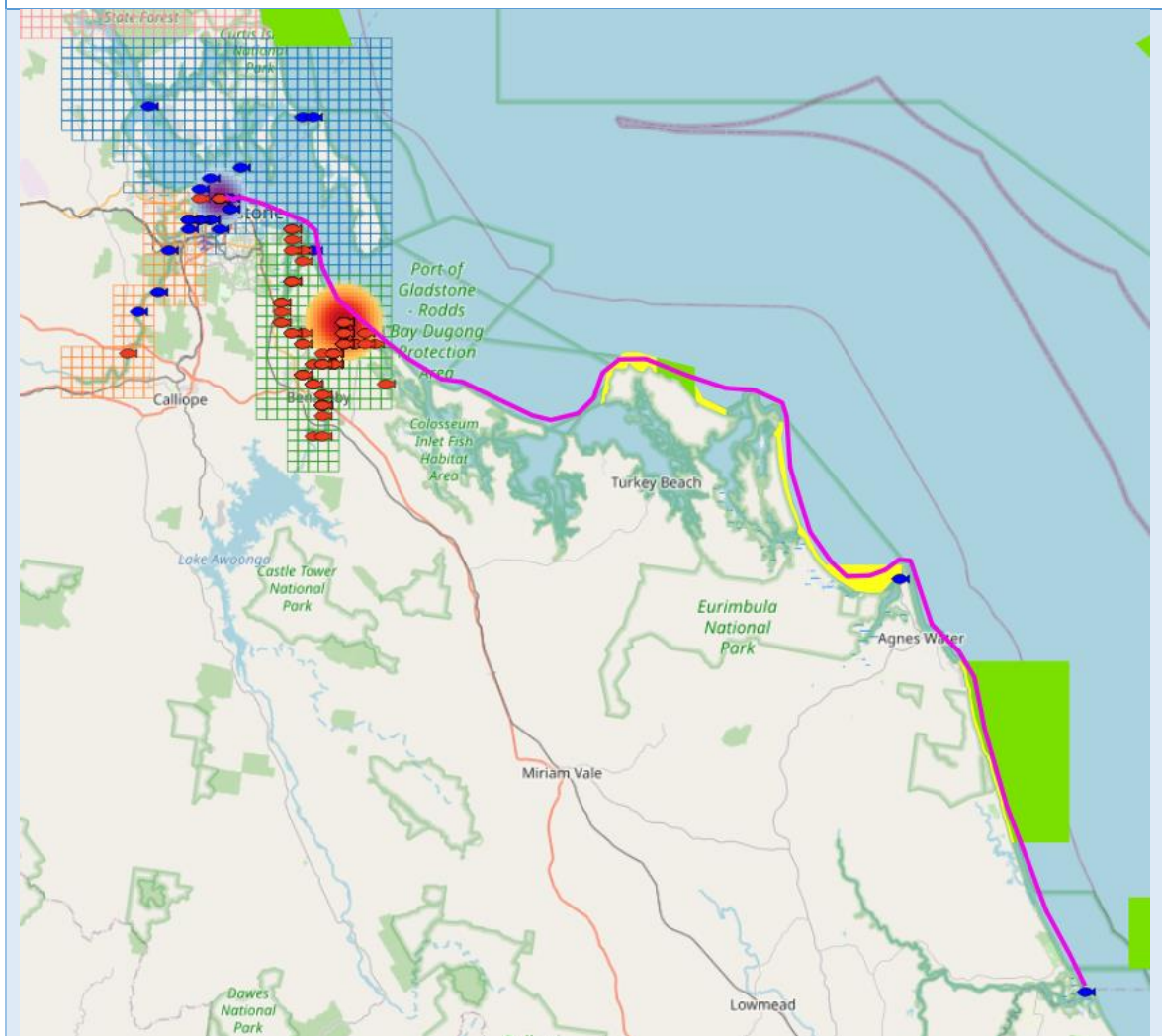
LOCATIONS

Recaptures of BTHU
tagged fish
Bray Park
Gladstone Marina
2016-2025

Bray Park tagged (red-orange heat map) recaptures (red fish)
Marina (purple-blue heat map) recaptures (blue fish)



Recaptures of Flathead tagged in Boyne Tannum Hook Up moved outside area
2016-2025



Data sources

Data used in the Gladstone Crystal Bowl are:

- Tag records and recapture records at <http://crystalbowl.infofishaustralia.com.au/>.
- Boyne Tannum Hook Up competition records at <http://crystalbowl.infofishaustralia.com.au/>.
- Calliope River flows from Castlehope Station 132001A at <https://water-monitoring.information.qld.gov.au/>.
- Gladstone rainfall from Gladstone Airport station 039326 from <http://www.bom.gov.au/climate/data/index.shtml>
- Awoonga Dam level data provided by Gladstone Area Water Board.

Basis for analysis

- Data reliability for fishers based on the sample size over the past 5 years for days fished by taggers and by fishers recapturing fish.
- Data reliability for fish based on average number of fish tagged and recaptured per year over the past 5 years.
- Catch rates calculated as number of fish tagged/day for T20 fishers (taggers) with a minimum of 12 fisher days (at least 1 per month) to provide a reliable catch rate.
- Recapture rates relate to fish tagged in a particular year.
- Growth calculated using logarithmic curve from recaptures where fish were out for 90 days or more and had positive growth.
- Survival rates are calculated based on a model that uses the reduction in the numbers of recaptures each year after tagging.
- Movement distances calculated as the shortest distance by water from the tag to recapture location using Google Earth.
- Proxy travel distance from the recapture fisher's home (address, suburb, city or postcode) to the recapture location is the straight-line distance between locations based on Google Earth coordinates with local <60km, intrastate >=60km and Qld postcodes, and interstate postcodes other than Qld.
- Gender based on names of recapture fishers excluding taggers.