

MACKAY REGION REVIEW 2025

INFORMATION RATING



Key species: Barramundi, Dusky Flathead, Goldspotted and Blackspotted Rockcod, Barred Javelin

Fish timeframe: 2016-2025

Fisher timeframe: 2021-2025

Scroll through the dashboard to cover all subjects or for information on a specific subject go to:

MACKAY REGION OVERVIEW

MACKAY ESTUARIES LOCATION

ENVIRONMENTAL CONDITIONS

TYPE OF FISHERY

FISHER ACTIVITY

FISHER EFFORT

FISHER TRAVEL

WHERE RECAPTURE FISHERS LIVE

KEY SPECIES

COMMERCIAL CATCH

BARRAMUNDI

FLATHEAD

JAVELIN (GRUNTER)

MACKAY REGION OVERVIEW

Summary of 2025

- Tagging continued in the Mackay region in 2025 with an additional 862 fish tagged and 81 recaptures.
- The area is mainly fished by locals and is predominantly a harvest fishery.

The Mackay fishing region goes from St Helens Bay in the north to Cape Palmerston in the south cover around 120km of the coast. Fishing activity in the region is mostly by local fishers (93% of recaptures) throughout the year with a peak in Feb and Mar at the start of the Barramundi open season and a smaller peak in Oct before the end of the season.

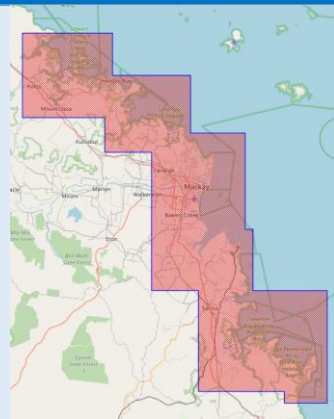
There were just 6% of fishers from intrastate and none from interstate. This could be a reflection of the local stocked lakes of Kinchant, Teemburra and Eungella being more attractive to visiting fishers than the local estuaries.

The fishery tends to be a harvest fishery with a harvest rate of 65% of legal recaptured fish (ex-taggers) and a harvest rate of 58% for Barramundi. This compares with a harvest rate of 0% in Lakes Kinchant and Teemburra which are almost completely experiential.

Tagging in the Mackay area has been continuous since the 1990s with taggers mostly targeting Barramundi, Flathead, and Javelin to a lesser extent. Goldspotted Rockcod and Blackspotted Rockcod are mostly tagged as an incidental catch.

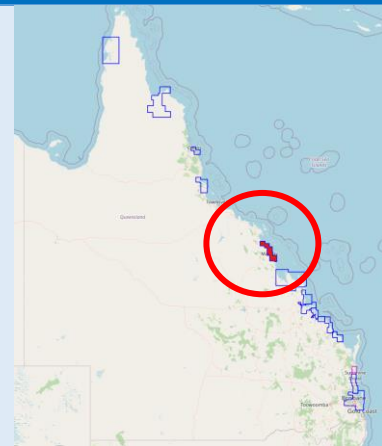
Tagging effort and numbers of fish tagged were low from 100-200 prior to the NFZ but have mostly ranged from 500-1000 since then. The overall recapture rate of 8.8% is a little above the state average of 7-8%. Taggers appear to have been more active in the NFZ area in the past 5 years than in other parts of the region.

MACKAY ESTUARIES LOCATION



St Helens Beach
20.83°S
148.84°E

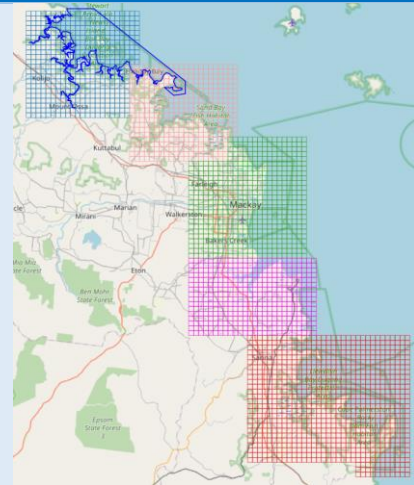
Sarina
21.42°S
149.22°E



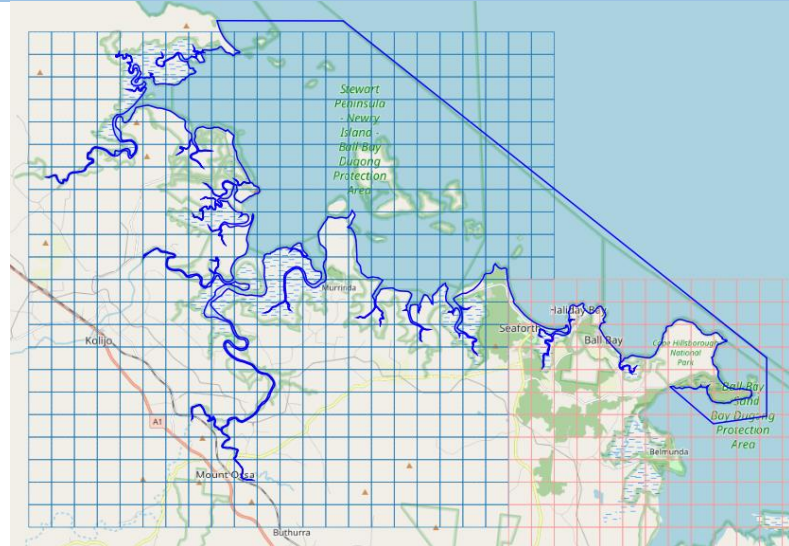
WATERWAYS

**Mackay estuaries
grid maps**
St Helens Bay (SHB)
Cape Hillsborough (CHM)
Mackay (MKY)
Hay Point (HPM)
Sarina (SRN)
**Net Free Zone (blue
outline)**

Murray Creek
Seaforth Creek
Constant Creek
Pioneer River
Bakers Creek
Sandy Creek
Alligator Creek
Plane Creek
Boundary Creek
Rocky Dam Creek
Cape Creek



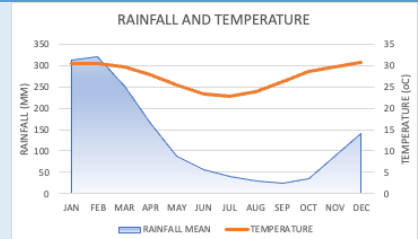
Mackay Net Free Zone



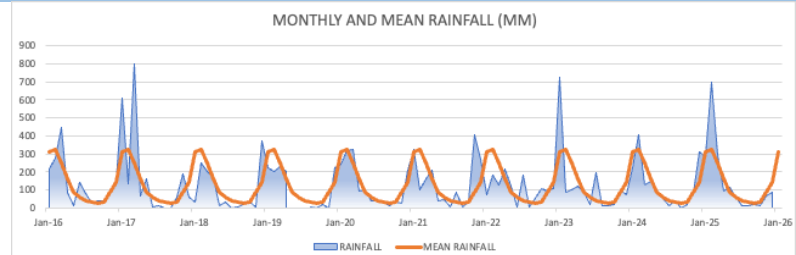
ENVIRONMENTAL CONDITIONS

Mackay monthly mean rainfall (mm) and temperature

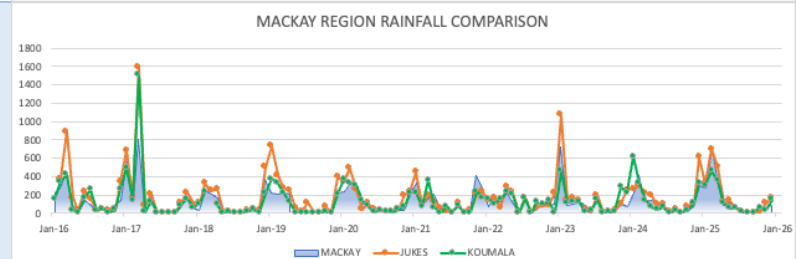
Rainfall	Month	mm
High	Feb	320
	Jan	312
Temp	Month	oC
High	Nov-Mar	30



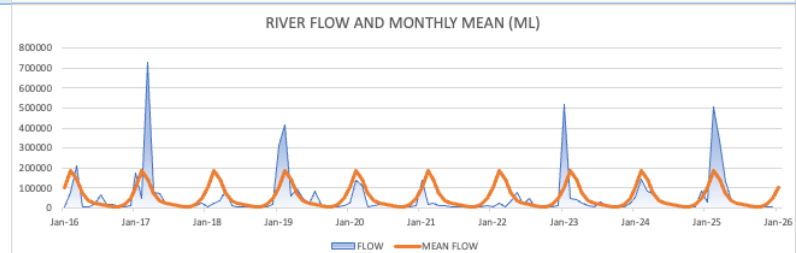
Mackay monthly rainfall
Mean monthly rainfall
Wet season Dec-Mar
2016-2025

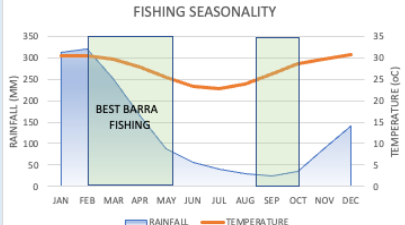

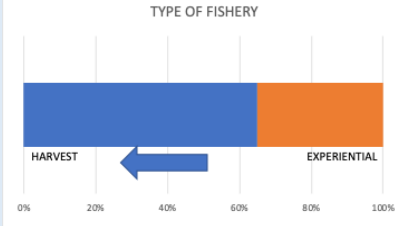
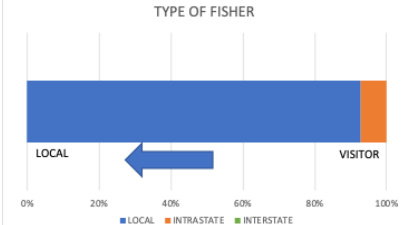
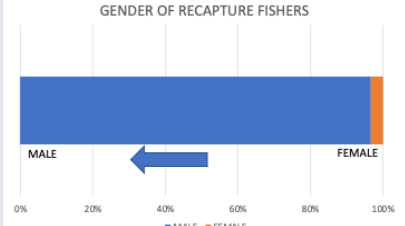


Regional rainfall
Mackay (blue)
Jukes north (orange)
Koumala south (green)
2016-2025



Pioneer River flow (ML)
2016-2025

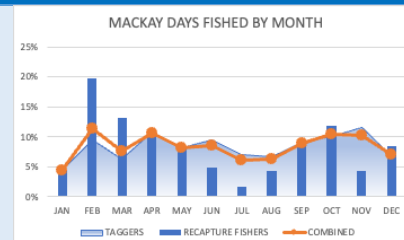


TYPE OF FISHERY																														
DATA RELIABILITY																														
Sample size (days fished)	<table><tr><td>Reliability level</td><td>LOW</td><td colspan="2">MODERATE</td><td>MODERATE</td><td colspan="2">HIGH</td></tr><tr><td>Samples</td><td>10</td><td>41</td><td>68</td><td>271</td><td>384</td><td>664</td></tr><tr><td>Confidence</td><td>80%</td><td>80%</td><td>90%</td><td>90%</td><td>95%</td><td>99%</td></tr><tr><td>Error</td><td>20%</td><td>10%</td><td>10%</td><td>5%</td><td>5%</td><td>5%</td></tr></table>		Reliability level	LOW	MODERATE		MODERATE	HIGH		Samples	10	41	68	271	384	664	Confidence	80%	80%	90%	90%	95%	99%	Error	20%	10%	10%	5%	5%	5%
Reliability level	LOW	MODERATE		MODERATE	HIGH																									
Samples	10	41	68	271	384	664																								
Confidence	80%	80%	90%	90%	95%	99%																								
Error	20%	10%	10%	5%	5%	5%																								
Tag days (blue arrow)																														
Recaptures (orange arrow)																														
Confidence %																														
Error %																														
2021-2025																														
Seasonality	Best Barramundi fishing																													
Mean monthly rainfall (mm)	Feb-May																													
Temperature (oC)	Sep-Oct																													
Mean monthly rainfall	Months most effort																													
Days fished combined	Days fished																													
Taggers	Feb																													
Recapture fishers	Apr																													
2021-2025	Oct																													
	Nov																													
Harvest or experiential fishery	Legal fish kept rate																													
Release rate of recaptured key species legal fish	Legal fish 126																													
2021-2025	Kept 82 (65%)																													
	Released 44 (35%)																													
Local or visitor fishery	Recapture fishers 290																													
Where recapture fishers live	Local 269 (93%)																													
2021-2025	Visitor 21 (7%)																													
Gender of recapture fishers (ex-taggers)	Recaptures 236																													
2021-2025	Female 8 (3%)																													
	Male 228 (97%)																													

FISHER ACTIVITY

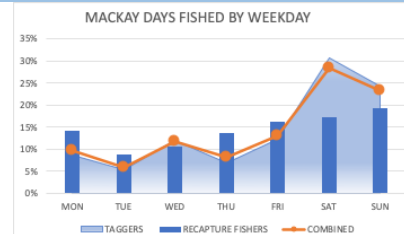
Monthly activity
Days fished
Taggers
Recapture fishers
2021-2025

Taggers	997
Recap fishers	227
Month	%
Combined Feb	11%
Apr	11%



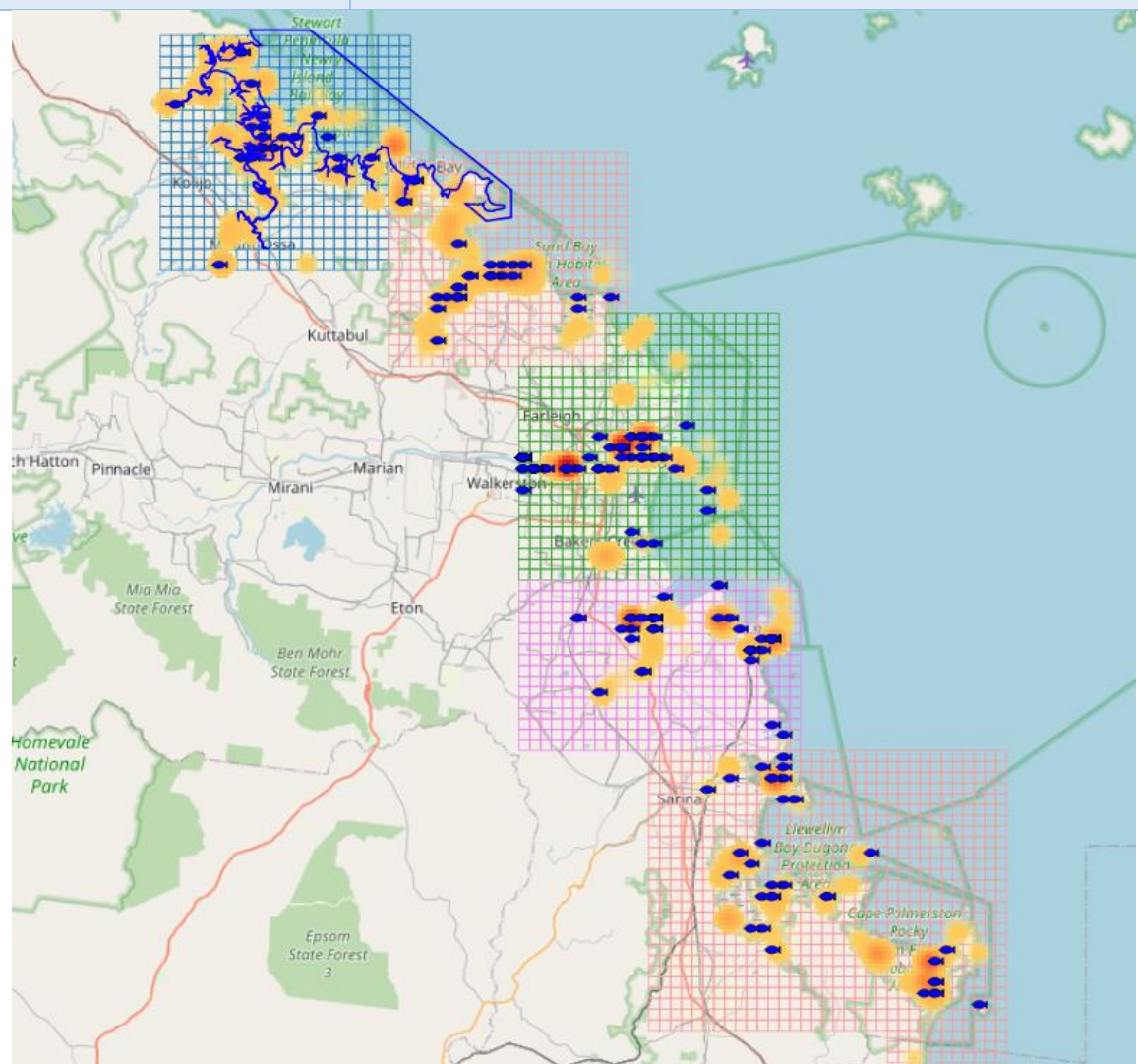
Weekday activity
Days fished
Taggers
Recapture fishers
2021-2025

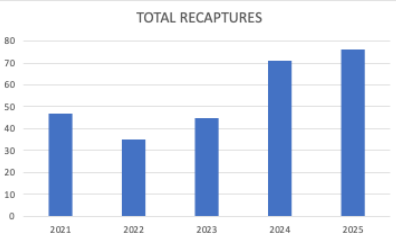
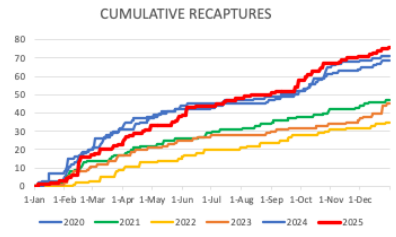
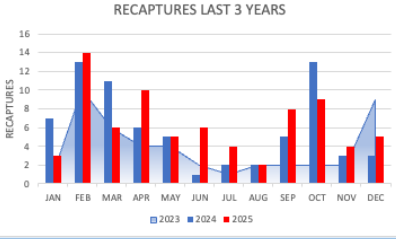
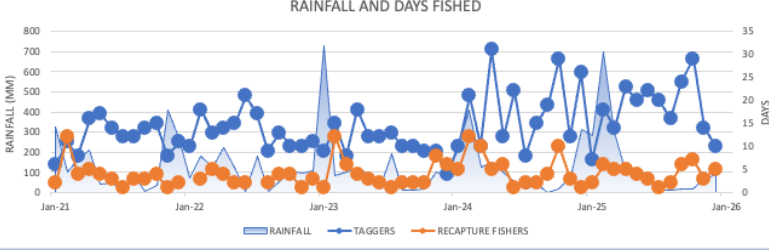
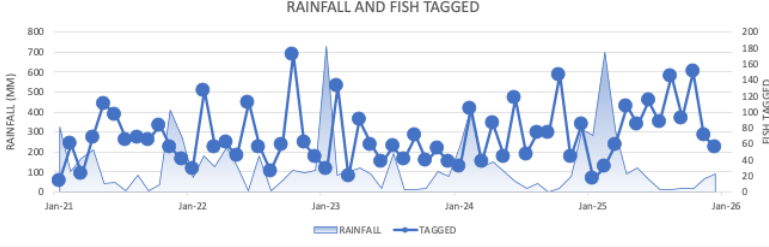
Taggers	997
Recap fishers	227
Day	%
Combined Weekend	52%
Weekdays	48%



Location activity
Taggers (red-orange heat map)
Recap fishers (blue fish)
2021-2025

Tagged	4647
Recaptured	76

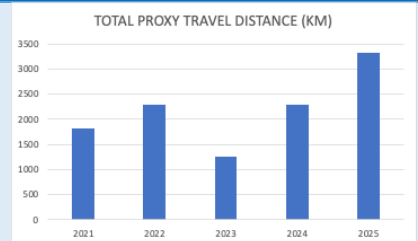


FISHER EFFORT			
Total recaptures 2021-2025	Year	Recaps	
	2021	47	
	2022	35	
	2023	45	
	2024	71	
	2025	76	
Cumulative recaptures 2021-2025			
Recaptures by month 2023-2025	Recaptures peak Feb start of Barra season Oct end of Barra season		
Fisher effort Mackay rainfall (mm) Days fished Taggers 2021-2025			
Mackay rainfall and fish tagged 2016-2025			

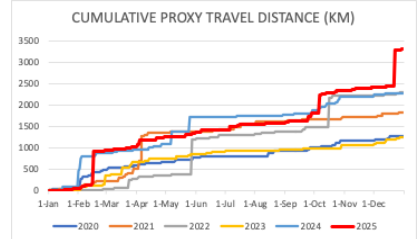
FISHER TRAVEL

Total proxy travel distance (km) where fishers live to recapture location 2021-2025

Year	Km
2021	1891
2022	2292
2023	1248
2024	2281
2025	3320

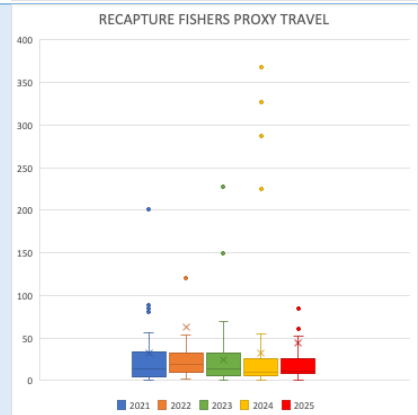


Cumulative distance (km) where fishers live to recapture location 2021-2025



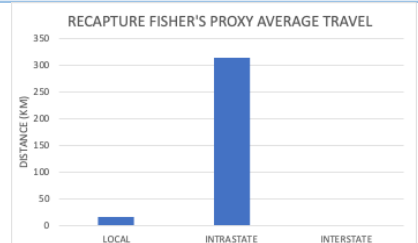
Cumulative distance (km) where fishers live to recapture location

Distance <400km



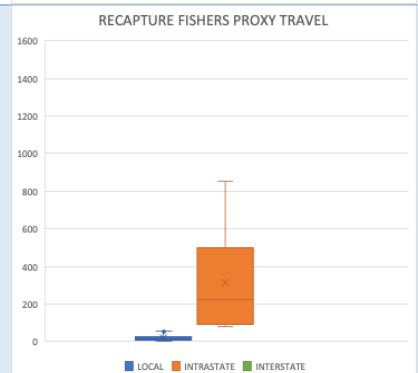
Average travel proxy distance (km) home to recapture location 2021-2025

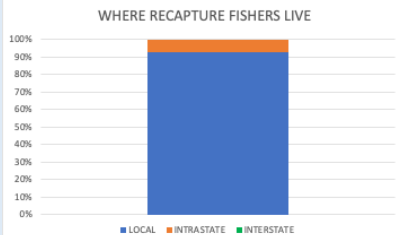
	Av distance (km)
Local	17
Intrastate	314
Interstate	-

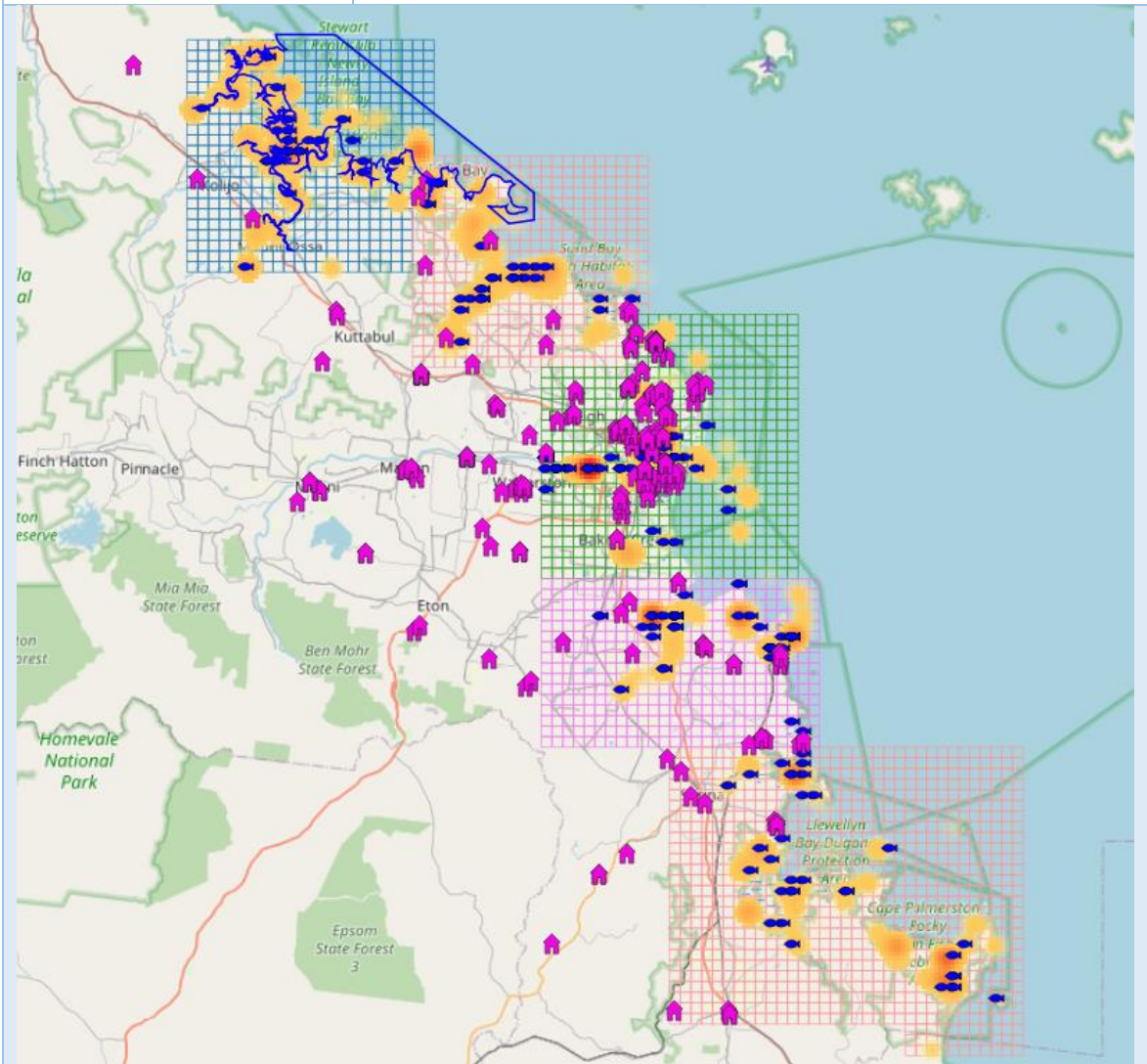


Distance (km) home to recapture location
Local
Intrastate
Interstate
2021-2025

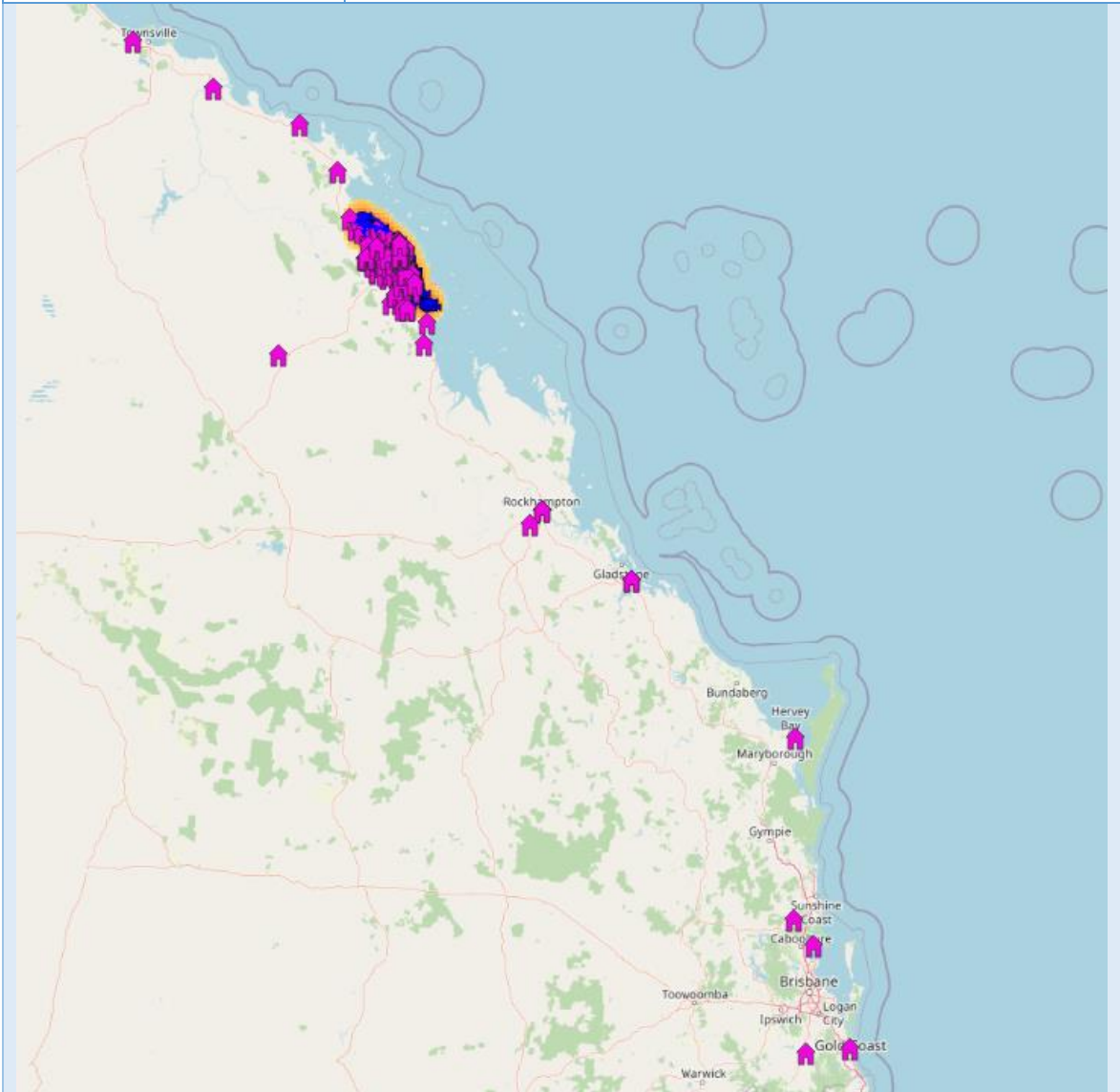
	Range (km)
Local	1-69
Intrastate	80-850
Interstate	-






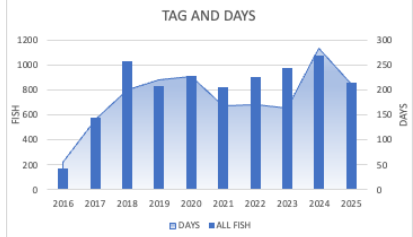
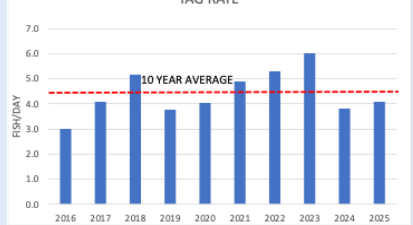
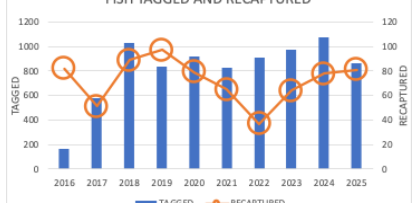


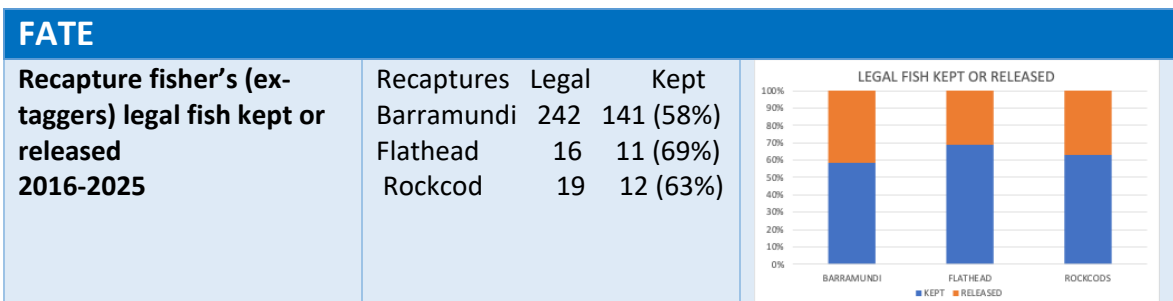
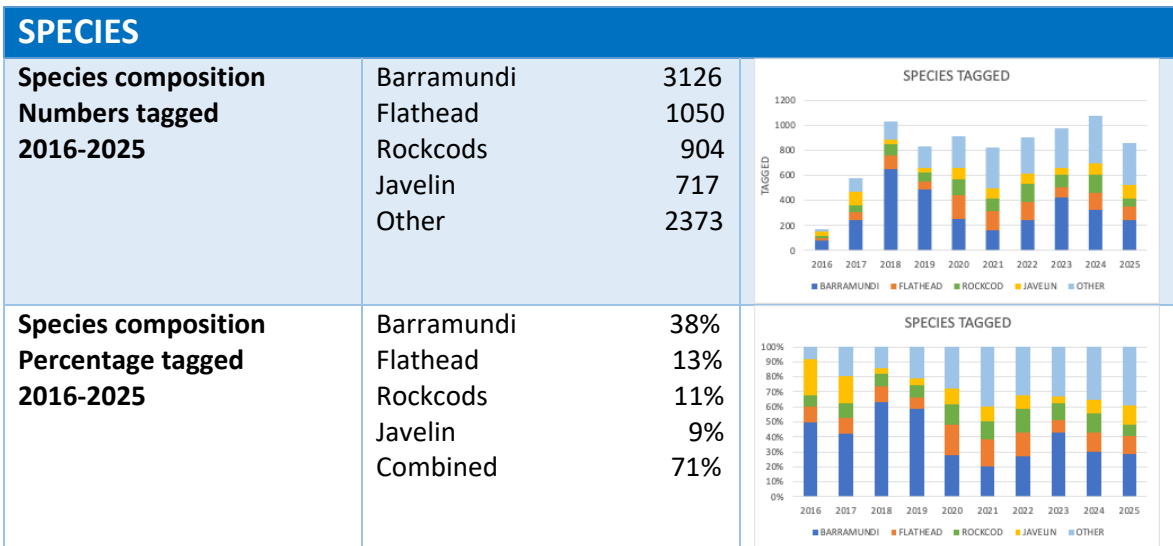
WHERE RECAPTURE FISHERS LIVE									
Where recapture fishers live 2021-2025	Recapture fishers	290	<div>WHERE RECAPTURE FISHERS LIVE</div>  <table><thead><tr><th>LOCAL</th><th>INTRASTATE</th><th>INTERSTATE</th></tr></thead><tbody><tr><td>269 (93%)</td><td>21 (7%)</td><td>0 (0%)</td></tr></tbody></table>	LOCAL	INTRASTATE	INTERSTATE	269 (93%)	21 (7%)	0 (0%)
	LOCAL	INTRASTATE		INTERSTATE					
	269 (93%)	21 (7%)		0 (0%)					
	Local	269 (93%)							
Intrastate	21 (7%)								
Interstate	0 (0%)								
Where fishers recapturing fish live (pink houses) Local 2021-2025	Local	269							



Where fishers recapturing fish live (pink houses) Intrastate Interstate 2021-2025	Intrastate	21
	Interstate	0



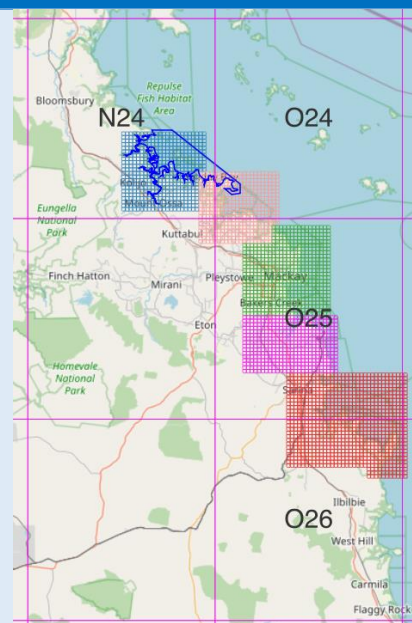
KEY SPECIES				
BARRAMUNDI		DUSKY FLATHEAD		BARRED JAVELIN
				
GOLDSPOTTED ROCKCOD and BLACKSPOTTED ROCKCOD				
				
TAGGED AND TAG RATE				
Tag and effort taggers Number of tagged fish Tag days 2016-2025	High	Low	Now	
	Tagged			
	2020	2016	2025	
	835	120	320	
	Days fished			
2020	2016	2025		
210	56	91		
Tag rate Fish/day 2016-2025	High	Low	Now	
	Tag rate			
	2021	2016	2025	
	5.1	2.1	3.5	
	10 year average		3.9	
Fish tagged Recaptured 2016-2025	Tagged		8170	
	Recaptured		723	
	Recapture rate		8.8%	
	Tagged 2025		862	
	Recaptured 2025		81	



COMMERCIAL CATCH

Commercial QFISH grids

Grids
N24 (Net Free Zone)
O24
O25
O26



NET CATCH ALL

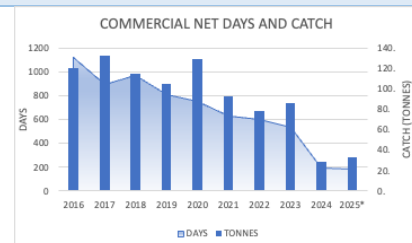
Commercial licences
Grids combined
Grids N24, O24, O25, O26
2016-2025

Year	Licences
2016	31
2020	28
2024	11
2025*	10
*incomplete	



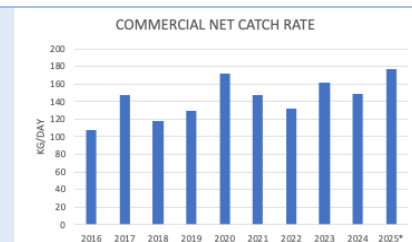
Commercial effort and catch
Net fishery (all)
Grids N24, O24, O25, O26
Days
Catch (tonnes)
2016-2025

Year	Days	Catch
2016	1123	120.6
2020	750	128.6
2024	194	28.8
2025*	186	32.9
*incomplete		



Commercial catch rate
Net fishery (all)
Grids N24, O24, O25, O26
Kg/day
2016-2025

Year	Kg/day
2016	107.4
2020	171.4
2024	148.5
2025*	177.0
*incomplete	



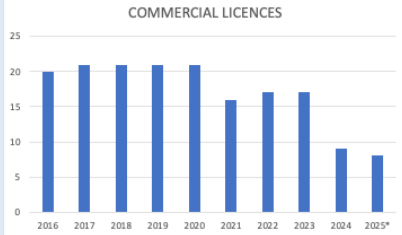
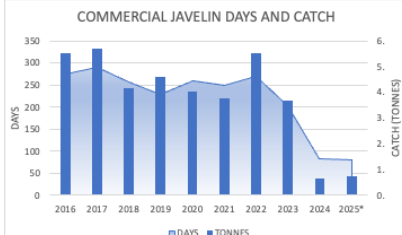
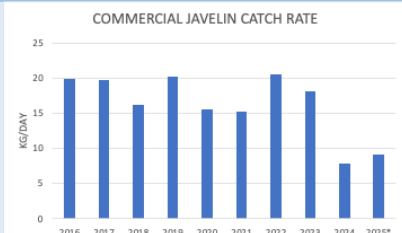
BARRAMUNDI

Commercial licences Grids combined Grids N24, O24, O25, O26 2016-2025	Year	Licences		<table><caption>COMMERCIAL LICENCES</caption><thead><tr><th>Year</th><th>Licences</th></tr></thead><tbody><tr><td>2016</td><td>25</td></tr><tr><td>2017</td><td>21</td></tr><tr><td>2018</td><td>22</td></tr><tr><td>2019</td><td>23</td></tr><tr><td>2020</td><td>23</td></tr><tr><td>2021</td><td>19</td></tr><tr><td>2022</td><td>17</td></tr><tr><td>2023</td><td>18</td></tr><tr><td>2024</td><td>6</td></tr><tr><td>2025*</td><td>7</td></tr></tbody></table>	Year	Licences	2016	25	2017	21	2018	22	2019	23	2020	23	2021	19	2022	17	2023	18	2024	6	2025*	7
	Year	Licences																								
	2016	25																								
	2017	21																								
	2018	22																								
	2019	23																								
2020	23																									
2021	19																									
2022	17																									
2023	18																									
2024	6																									
2025*	7																									
2016	25																									
2020	23																									
2024	6																									
2025*	7																									
*incomplete																										

Commercial effort and catch Net fishery (all) Grids N24, O24, O25, O26 Days Catch (tonnes) 2016-2025	Year	Days	Catch	<table><caption>COMMERCIAL BARRAMUNDI DAYS AND CATCH</caption><thead><tr><th>Year</th><th>Days</th><th>Catch (tonnes)</th></tr></thead><tbody><tr><td>2016</td><td>612</td><td>42.2</td></tr><tr><td>2017</td><td>530</td><td>35.0</td></tr><tr><td>2018</td><td>480</td><td>30.0</td></tr><tr><td>2019</td><td>330</td><td>20.0</td></tr><tr><td>2020</td><td>340</td><td>20.0</td></tr><tr><td>2021</td><td>400</td><td>15.0</td></tr><tr><td>2022</td><td>310</td><td>10.0</td></tr><tr><td>2023</td><td>330</td><td>10.0</td></tr><tr><td>2024</td><td>140</td><td>5.0</td></tr><tr><td>2025*</td><td>161</td><td>17.1</td></tr></tbody></table>	Year	Days	Catch (tonnes)	2016	612	42.2	2017	530	35.0	2018	480	30.0	2019	330	20.0	2020	340	20.0	2021	400	15.0	2022	310	10.0	2023	330	10.0	2024	140	5.0	2025*	161	17.1
	Year	Days	Catch (tonnes)																																		
	2016	612	42.2																																		
	2017	530	35.0																																		
	2018	480	30.0																																		
	2019	330	20.0																																		
2020	340	20.0																																			
2021	400	15.0																																			
2022	310	10.0																																			
2023	330	10.0																																			
2024	140	5.0																																			
2025*	161	17.1																																			
2016	612	42.2																																			
2020	379	21.4																																			
2024	127	9.3																																			
2025*	161	17.1																																			
*incomplete																																					

Commercial catch rate Net fishery (all) Grids N24, O24, O25, O26 Kg/day 2016-2025	Year	Kg/day		<table><caption>COMMERCIAL BARRAMUNDI CATCH RATE</caption><thead><tr><th>Year</th><th>Kg/day</th></tr></thead><tbody><tr><td>2016</td><td>69.0</td></tr><tr><td>2017</td><td>69.0</td></tr><tr><td>2018</td><td>66.0</td></tr><tr><td>2019</td><td>50.0</td></tr><tr><td>2020</td><td>56.3</td></tr><tr><td>2021</td><td>70.0</td></tr><tr><td>2022</td><td>60.0</td></tr><tr><td>2023</td><td>70.0</td></tr><tr><td>2024</td><td>73.5</td></tr><tr><td>2025*</td><td>106.3</td></tr></tbody></table>	Year	Kg/day	2016	69.0	2017	69.0	2018	66.0	2019	50.0	2020	56.3	2021	70.0	2022	60.0	2023	70.0	2024	73.5	2025*	106.3
	Year	Kg/day																								
	2016	69.0																								
	2017	69.0																								
	2018	66.0																								
	2019	50.0																								
2020	56.3																									
2021	70.0																									
2022	60.0																									
2023	70.0																									
2024	73.5																									
2025*	106.3																									
2016	69.0																									
2020	56.3																									
2024	73.5																									
2025*	106.3																									
*incomplete																										

JAVELIN (GRUNTER)

Commercial licences Grids combined 2016-2025	Year	Licences		
	2016	20		
	2020	21		
	2024	9		
	2025*	8		
	*incomplete			
Commercial effort and catch Net fishery Grids N24, O24, O25, O26 Days Catch (tonnes) 2016-2025	Year	Days	Catch	
	2016	276	5.5	
	2020	260	4.0	
	2024	84	0.7	
	2025*	81	0.7	
	*incomplete			
Commercial catch rate Net fishery (all) Grids N24, O24, O25, O26 Kg/day 2016-2025	Year	Kg/day		
	2016	20.0		
	2020	15.5		
	2024	7.9		
	2025*	9.1		
	*incomplete			

BARRAMUNDI



DATA RELIABILITY

Sample size (fish/year)
Tagged (blue arrow)
Recaptures (orange arrow)
Confidence %
Error %
2021-2025

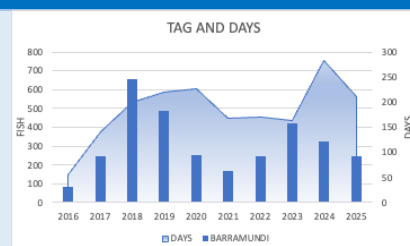
Reliability level	LOW		MODERATE		MODERATE		HIGH	
Samples	10	41	68	271	384	664		
Confidence	80%	80%	90%	90%	95%	99%		
Error	20%	10%	10%	5%	5%	5%		



TAGGED AND TAG RATE

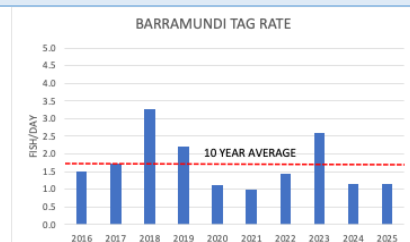
Catch and effort taggers
number of tagged fish
days fished
2016-2025

High	Low	Now
Tagged		
2018	2016	2025
653	84	247
Days fished		
2024	2016	2025
283	56	212



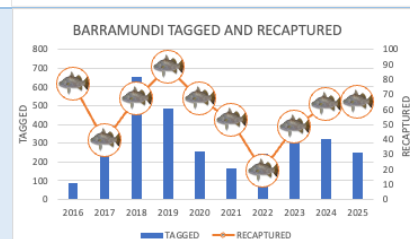
Tag rate
Fish/day
2016-2025

High	Low	Now
Tag rate		
2018	2021	2025
3.3	1.0	1.2
10 year average		1.7



Fish tagged (all) and
recaptured
2016-2025

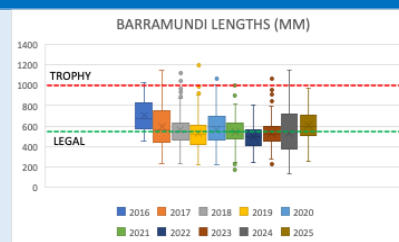
Tagged	3126
Recaptured	586
Recapture rate	18.7%
Tagged 2025	653
Recaptured 2025	65



LENGTHS

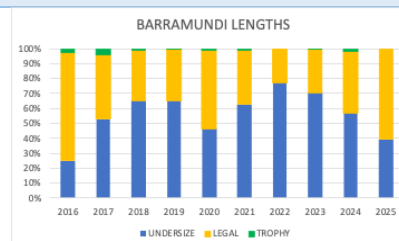
Average length (mm)
Bars show length range
Dots show outliers
2016-2025

High	Low	Now
Average length		
2016	2022	2025
703	494	608
Max		
2019	2022	2025
1200	800	970



Fish lengths percentage
Undersize <580mm
Legal 580-1000mm
Trophy 1000+mm
2016-2025

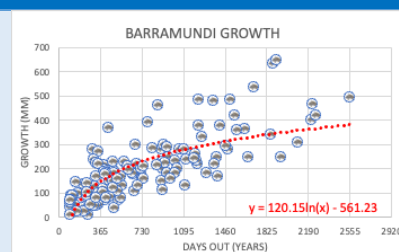
High	Low	Now
Legal-Trophy		
2016	2022	2025
72%	23%	61%
Trophy		
2017	2022	2025
4%	0%	0%



GROWTH

Barramundi growth at the end of each year
Fish tagged <580mm
2016-2025

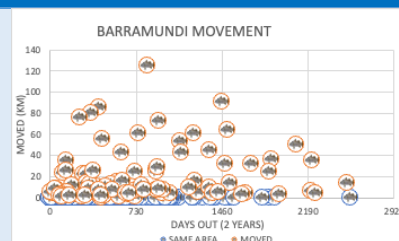
Recaptures	131
Growth (mm)	
Year 1	148
Year 2	231
Year 3	280
Year 4	314
Year 5	341



MOVEMENT

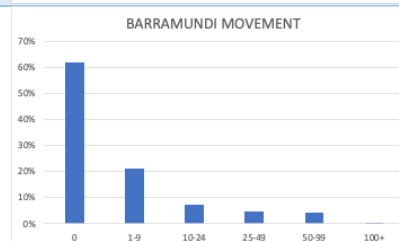
Barramundi movements
Mackay area
Distance moved (km)
2016-2025

Recaptures	254
------------	-----



Barramundi movements
Mackay area
Distance moved (km)
2016-2025

Recaptured	254
Same area	157 (62%)
Moved 1-9km	54 (21%)
Moved 10-24km	19 (7%)
Moved 25-49km	12 (5%)
Moved 50-99km	11 (4%)
Moved 100+km	1 (1%)
Max	125km



FLATHEAD



DATA RELIABILITY

Sample size (fish/year)
Tagged (blue arrow)
Recaptures (orange arrow)
Confidence %
Error %
2021-2025

Reliability level	LOW		MODERATE		MODERATE		HIGH
Samples	10	41	68	271	384	664	
Confidence	80%	80%	90%	90%	95%	99%	
Error	20%	10%	10%	5%	5%	5%	



TAGGED AND TAG RATE

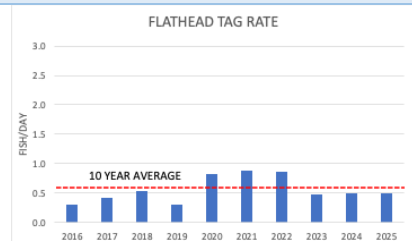
Catch and effort taggers
number of tagged fish
days fished
2016-2025

	High	Low	Now
Tagged			
2020	2016	2025	
185	17	104	
Days fished			
2024	2016	2025	
283	56	212	



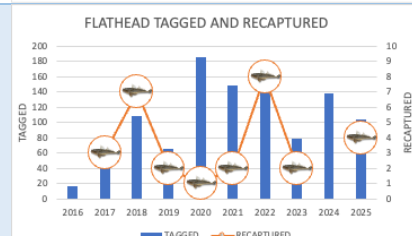
Tag rate
Fish/day
2016-2025

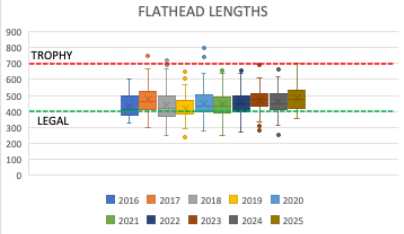
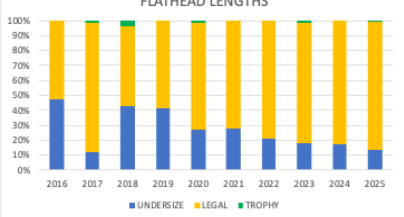
	High	Low	Now
Tag rate			
2021	2016	2025	
0.9	0.3	0.5	
10 year average			0.6



Fish tagged and
recaptured
2016-2025

Tagged	1050
Recaptured	29
Recapture rate	2.8%
Tagged 2025	104
Recaptured 2025	4



LENGTHS			
Average length (mm) Bars show length range Dots show outliers 2016-2025	High	Low	Now
	Average length		
	2017	2016	2025
	477	435	482
	Max		
	2020	2016	2025
	807	600	700
			
Fish lengths percentage Undersize <400mm Legal 400-700mm Trophy 700+mm 2016-2025	High	Low	Now
	Legal -Trophy		
	2017	2016	2025
	86%	53%	86%
	Trophy		
	2018	2024	2025
	4%	0%	1%
			

MOVEMENT

Flathead movements

Mackay area

Distance moved (km)

2016-2025

Recaptures

Same area

Moved

Max

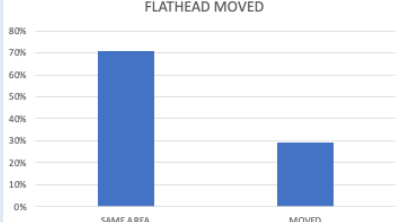
24

17 (71%)

7 (29%)

12km

FLATHEAD MOVED



Category	Percentage
SAME AREA	71%
MOVED	29%

ROCKCODS



DATA RELIABILITY

Sample size (fish/year)
Tagged (blue arrow)
Recaptures (orange arrow)
Confidence %
Error %
2021-2025

Reliability level	LOW		MODERATE		MODERATE		HIGH
Samples	10	41	68	271	384	664	
Confidence	80%	80%	90%	90%	95%	99%	
Error	20%	10%	10%	5%	5%	5%	



TAGGED AND TAG RATE

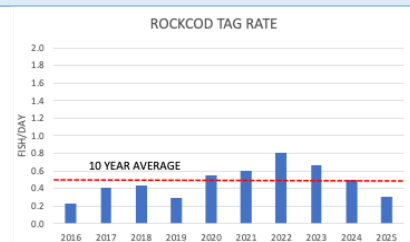
Catch and effort taggers
number of tagged fish
days fished
2016-2025

	High	Low	Now
Tagged			
2024	2016	2025	
142	13	66	
Days fished			
2024	2016	2025	
283	56	212	



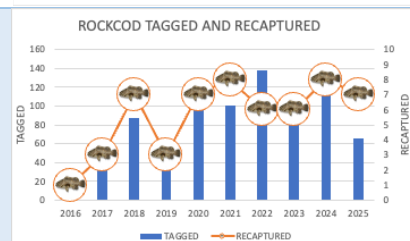
Tag rate
Fish/fisher day
2016-2025

	High	Low	Now
Tag rate			
2022	2016	2025	
0.8	0.2	0.3	
10 year average			0.5



Fish tagged
Recaptured
2016-2025

Tagged	904
Recaptured	56
Recapture rate	6.2%
Tagged 2025	66
Recaptured 2025	7



LENGTHS				
Average length (mm) Both species Bars show length range Dots show outliers 2016-2025	High	Low	Now	<p>ROCKCOD LENGTHS</p>
	Average length			
	2023	2019	2025	
	345	316	353	
	Max			
	2020	2016	2025	
610	400	500		
Fish lengths percentage Both species Undersize <380mm Legal 380-600mm Trophy 600+mm 2016-2025	High	Low	Now	<p>ROCKCOD LENGTHS</p>
	Legal-Trophy			
	2021	2019	2025	
	27%	14%	27%	
	Trophy			
	2023	2024	2025	
1%	0%	0%		

MOVEMENT				
Rockcod movements Distance moved (km) 2016-2025	Recaptures	51		
	Max	38km		
Rockcod movements 2016-2025	Same area	47 (92%)		
	Moved	4 (8%)		

JAVELIN (GRUNTER)



DATA RELIABILITY

Sample size (fish/year)
Tagged (blue arrow)
Recaptures (orange arrow)
Confidence %
Error %
2021-2025

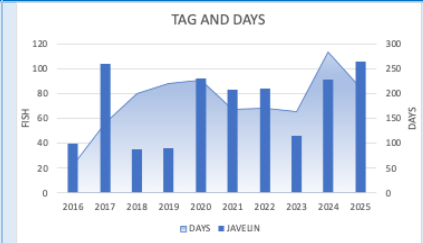
Reliability level	LOW		MODERATE		MODERATE		HIGH	
Samples	10	41	68	271	384	664		
Confidence	80%		80%	90%	90%	95%	99%	
Error	20%		10%	10%	5%	5%	5%	



TAGGED AND TAG RATE

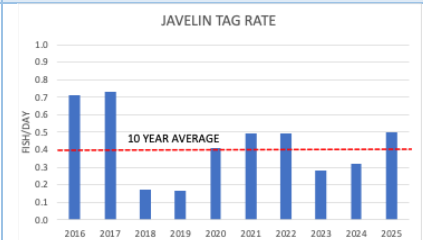
Tag and effort taggers
Number of tagged fish
Days fished
2016-2025

High	Low	Now
Tagged		
2017	2019	2025
105	35	31
Days fished		
2024	2016	2025
283	56	212



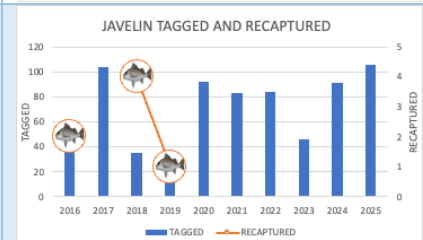
Tag rate
Fish/fisher day
2016-2025

High	Low	Now
Tag rate		
2017	2019	2025
0.7	0.2	0.5
10 year average		0.4



Fish tagged and recaptured
2016-2025

Tagged	611
Recaptured	7
Recapture rate	1.1%
Tagged 2025	106
Recaptured 2025	0

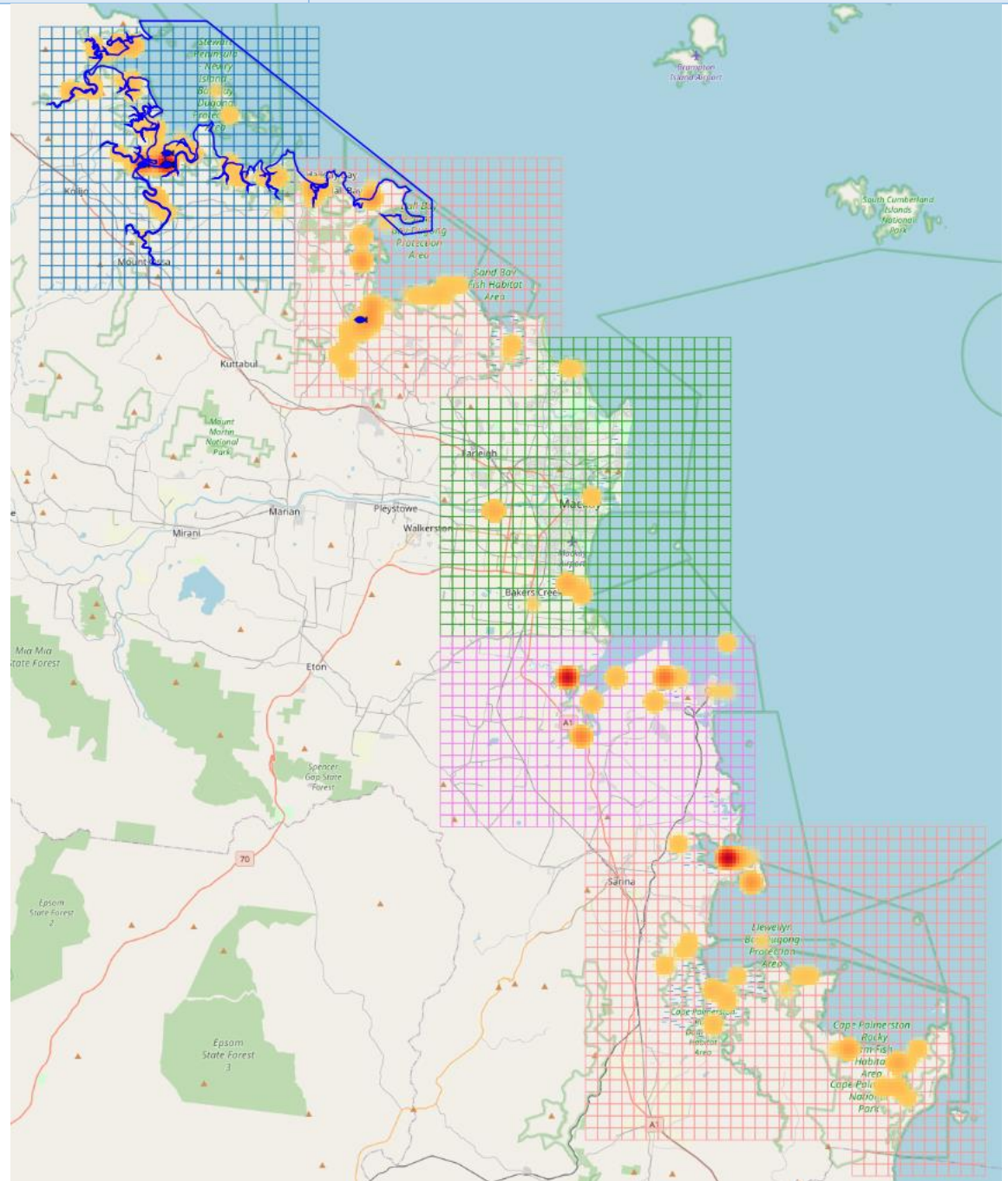


LENGTHS				
Average length (mm) Bars show length range 2016-2025	High	Low	Now	
	Average length			
	2024	2022	2025	
	371	312	345	
	Max			
2016	2019	2025		
625	420	580		
Fish lengths percentage Undersize <400mm Legal 400-599mm Trophy 600+mm 2016-2025	High	Low	Now	
	Legal-Trophy			
	2016	2022	2025	
	33%	9%	14%	
	Trophy			
2016	2019-24	2025		
3%	0%	0%		

LOCATIONS

Barred Javelin
Tagged (red-orange heat map)
Recaptured (blue fish)
NFZ outlined blue
2016-2025

Tagged 717
 Recaptured 7



Data sources

Data used in the Mackay Crystal Bowl are:

- Tag records and recapture records at <http://crystalbowl.infofishaustralia.com.au/>.
- Rainfall records from Mackay station 033045, Mount Jukes 033053 and Koumala Hatfields Road 033038 from <http://www.bom.gov.au/climate/data>.
- Pioneer River flows at station 125007A at Mirani Weir Tail from <https://water-monitoring.information.qld.gov.au/>.
- Temperature records from Mackay station 033045 from <http://www.bom.gov.au/climate/data>.

Basis for analysis

- Data reliability for fishers based on the sample size over the past 5 years for days fished by taggers and by fishers recapturing fish.
- Data reliability for fish based on average number of fish tagged and recaptured per year over the past 5 years.
- Catch rates calculated as number of fish tagged/day for taggers with a minimum of 12 fisher days (at least 1 per month) to provide a reliable catch rate.
- For Barramundi undersized fish are <580mm, legal fish are ≥580 and <1000mm and trophy fish are ≥1000mm.
- For Dusky Flathead undersized fish are <400mm, legal fish are ≥400 and <700mm and trophy fish are ≥700mm.
- For Rockcod undersized fish are <380mm, legal fish are ≥380 and <600mm and trophy fish are ≥600mm.
- For Barred Javelin undersized fish are <400mm, legal fish are ≥400mm and <600mm and trophy fish are ≥600mm.
- Analysis of Goldspotted Rockcod and Blackspotted Rockcod is based on combined records as the species are closely related, occupy similar habitat and have the same level of catchability.
- Growth calculated using logarithmic curve from recaptures where fish were out for 90 days or more and had positive growth.
- Locations based on Infofish grid maps SRN, HPM, MKY, CHM AND SHB and other grid maps where fish were recaptured outside the area.
- Movement has been calculated as the shortest distance by water from the tag to the recapture location derived from Google Earth.
- Distance from fisher's home to recapture location is the straight-line distance between locations based on Google Earth coordinates with Local <80, Intrastate ≥80 and Qld postcode, Interstate postcode other than Qld.